

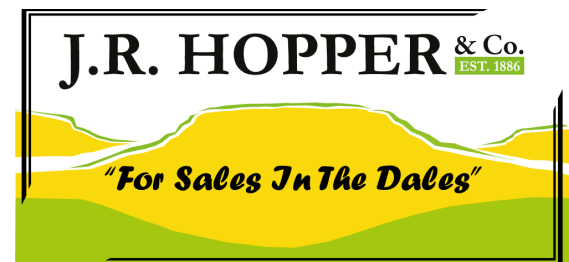


The Homestead, Kirkby Stephen

Guide Price: £285,000 - £320,000

J.R. Hopper & Co.

jrhopper.com | 01969 622936





- Detached Dorma Bungalow In Quiet Yet Convenient Location
- Flexible Accommodation
- Large Dining Kitchen & Utility
- Lovely Sitting Room With Bay Window
- 2/3 Double Bedrooms
- Bathroom & Shower Room
- Front & Rear Gardens
- Long Distant Views
- Ample Off Street Parking
- Ideal Family Home, Holiday Retreat Or Investment Property



A delightful and spacious detached dormer bungalow set within generous gardens in the picturesque market town of Kirkby Stephen.

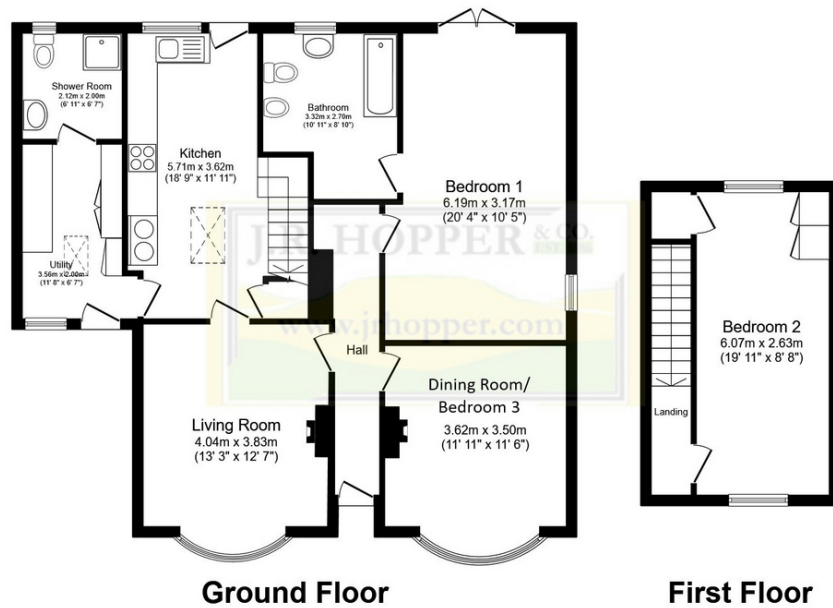
The accommodation includes a welcoming hall, spacious living room with gas fire, formal dining room, kitchen, utility, shower room and master bedroom with en suite. Upstairs is a further large double bedroom. The property is well maintained throughout, with scope for modernisation. Externally, The Homestead enjoys attractive wraparound gardens and ample driveway parking.



3

2





Total floor area 120.2 sq.m. (1,294 sq.ft.) approx

This floor plan is for illustrative purposes only. It is not drawn to scale. Any measurements, floor areas (including any total floor area), openings and orientation are approximate. No details are guaranteed, they cannot be relied upon for any purpose and they do not form part of any agreement. No liability is taken for any error, omission or misstatement. A party must rely upon its own inspection(s). Powered by www.focalagent.com

Energy Efficiency Rating		
	Current	Potential
Very energy efficient - lower running costs		
(92+)	A	78
(81-91)		
(69-80)		
(55-68)		
(39-54)	D	31
(21-38)		
(1-20)		
Not energy efficient - higher running costs		
England, Scotland & Wales		
		EU Directive 2002/91/EC



J.R. Hopper & Co.

Central Chambers, Leyburn, DL8 3LB

jrhopper.com | 01969 622936