



11 Fosseway Gardens, Radstock , BA3

£293,950

- Three Bed Terraced
- 3 double bedrooms – including a unique loft room
- Council Tax Band - B
- Garage & parking in nearby block
- Spacious kitchen, separate dining room & handy utility
- Front & rear gardens with far-reaching countryside views
- Tenure - Freehold
- Energy Rating - D
- Convenient W/C plus family bathroom
- Peaceful location, close to amenities & transport links

Located in the peaceful Fosseway Gardens, Westfield, this charming terraced home offers comfort, space, and beautiful views. The property features three double bedrooms, including a unique loft room, a well-appointed kitchen, separate dining room, utility, and W/C. Upstairs are two generous bedrooms and a family bathroom, with the third bedroom in the loft. Outside, enjoy front and rear gardens, far-reaching views, plus a garage and parking nearby. With local amenities and transport links close by, this home combines modern living with a tranquil setting.

Do not miss the chance to make this charming property your new home. Call Barons today on 01761 411411 to arrange your viewing.

Living Room 13'8" x 13'0" (4.18 x 3.98)

Dining Room 10'6" x 9'4" (3.22 x 2.85)

Kitchen 9'1" x 13'0" (2.78 x 3.98)

Bedroom One 13'9" max x 10'0" max (4.21 max x 3.07 max)

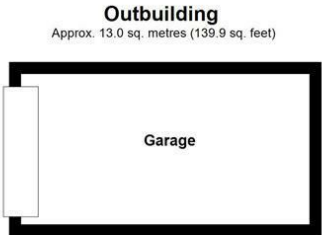
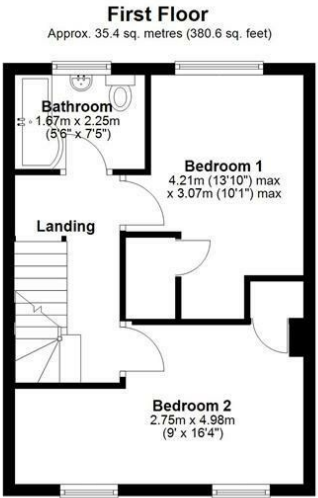
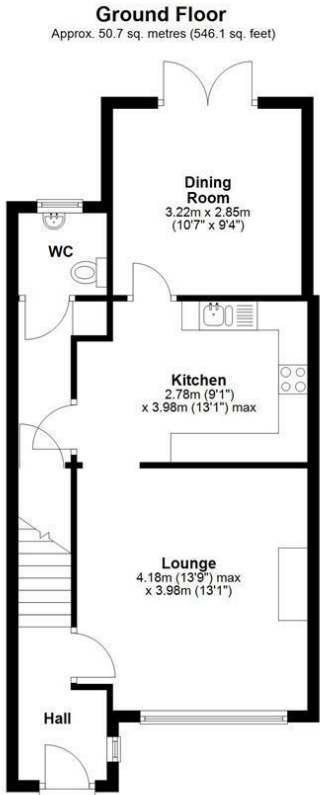
Bedroom Two 9'0" x 16'4" (2.75 x 4.98)

Bedroom Three/Loft Room 11'3" x 13'3" (3.43 x 4.05)

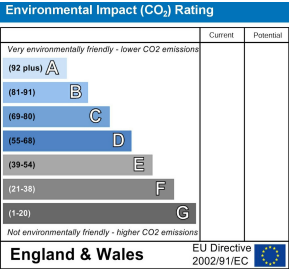
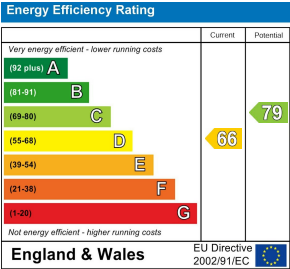
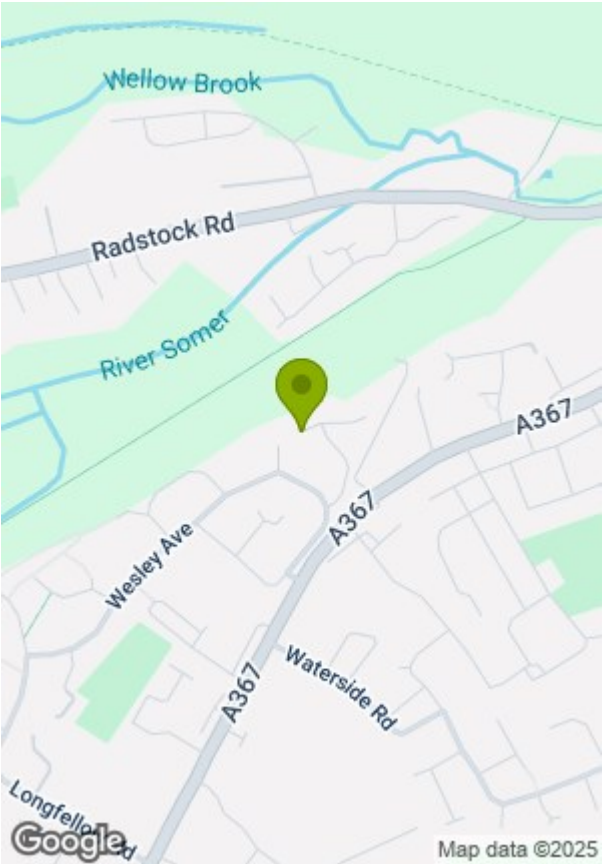
Bathroom 5'5" x 7'4" (1.67 x 2.25)







Total area: approx. 115.4 sq. metres (1242.4 sq. feet)



These particulars, whilst believed to be accurate are set out as a general outline only for guidance and do not constitute any part of an offer or contract. Intending purchasers should not rely on them as statements of representation of fact, but must satisfy themselves by inspection or otherwise as to their accuracy. No person in this firms employment has the authority to make or give any representation or warranty in respect of the property.