



35 Westhill Gardens, Radstock , BA3

£1,450 PCM

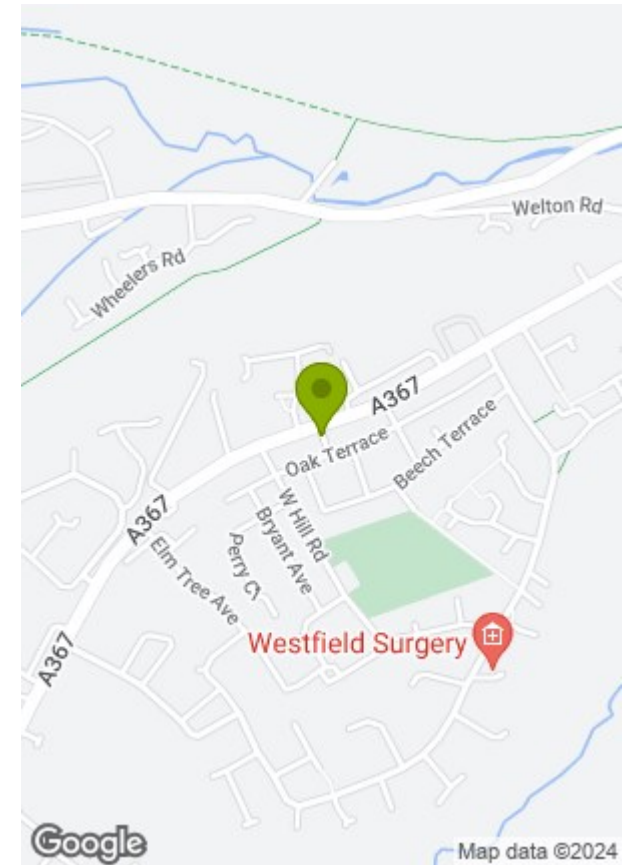
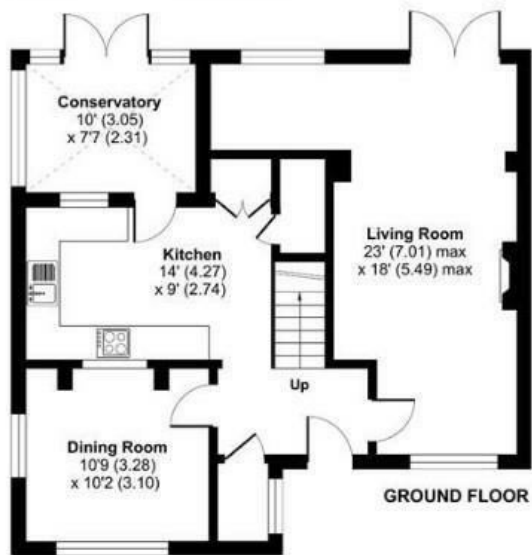
This charming three-bedroom house offers ample living accommodation, featuring two reception areas and a nice-sized kitchen that leads into a conservatory with access to the rear garden. The entrance hallway provides access to all rooms, including a generous living room with a view of the rear lawn garden.

On the second floor, you'll find three well-proportioned bedrooms and a family bathroom equipped with both a bath and a shower cubicle. The beautiful patio and lawn garden at the rear of the property offer a perfect outdoor space for relaxation.

Conveniently located, the property is close to local schools, a nursery, and basic amenities. For commuters, Bath is approximately a 25-minute drive away, while the towns of Midsomer Norton and Radstock are just moments away.







Energy Efficiency Rating		Current	Potential
Very energy efficient - lower running costs			
(92 plus)	A		
(81-91)	B		
(69-80)	C		
(55-68)	D		
(39-54)	E		
(21-38)	F		
(1-20)	G		
Not energy efficient - higher running costs			
		40	81

England & Wales EU Directive 2002/91/EC

Environmental Impact (CO ₂) Rating		Current	Potential
Very environmentally friendly - lower CO ₂ emissions			
(92 plus)	A		
(81-91)	B		
(69-80)	C		
(55-68)	D		
(39-54)	E		
(21-38)	F		
(1-20)	G		
Not environmentally friendly - higher CO ₂ emissions			

England & Wales EU Directive 2002/91/EC

These particulars, whilst believed to be accurate are set out as a general outline only for guidance and do not constitute any part of an offer or contract. Intending purchasers should not rely on them as statements of representation of fact, but must satisfy themselves by inspection or otherwise as to their accuracy. No person in this firm's employment has the authority to make or give any representation or warranty in respect of the property.