



146 Harescombe

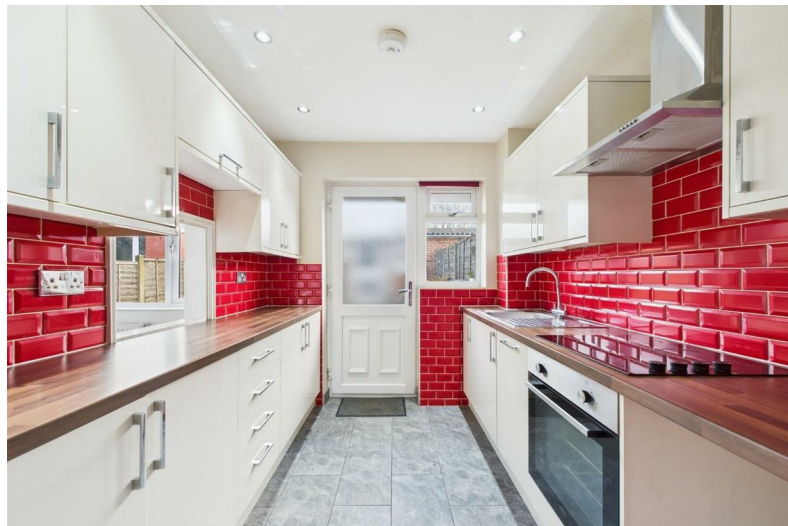
Yate, Bristol, BS37 8UF

**Asking price £300,000**





# 146 Harescombe



## Description

Welcome to this lovely 3 bedroom end of terrace situated in a sought-after cul-de-sac and within walking distance of Yate Shopping Center and Kingsgate Park. With good transport links, a private garage and no onward chain, this property is ideal for first time buyers and families alike.

Comprising of a generous hallway leading to an open plan living / dining room and a modern kitchen. To the rear you'll find a good sized garden, a car port and a garage. The garage is currently set up as a studio with electrics & storage space to the front. Upstairs you'll find two double bedrooms, a third single bedroom and a modern bathroom.

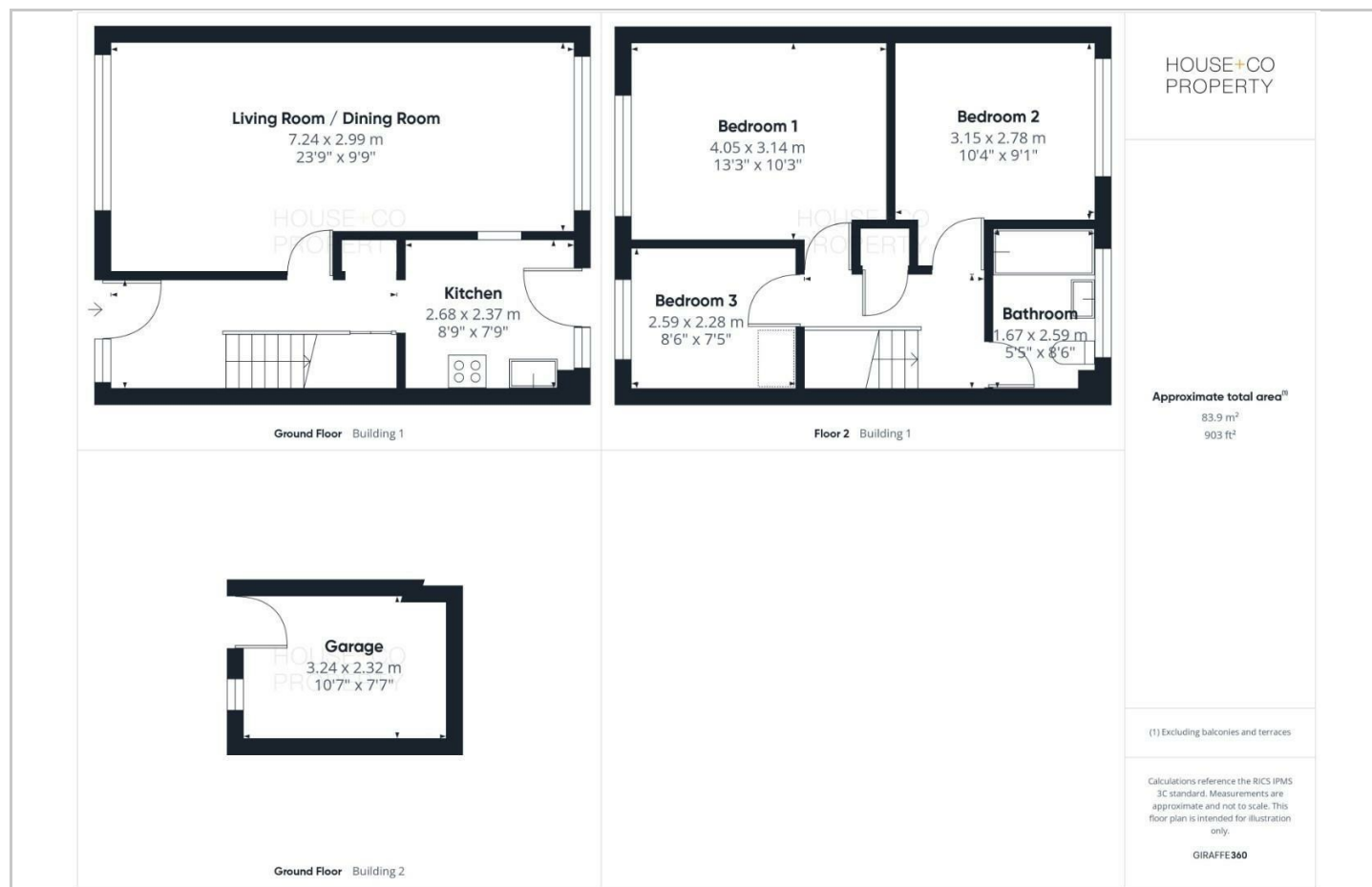
Further benefits include double glazing, gas central heating from a combination boiler and much more! Don't miss out on making this gem your own, call now to book a viewing !!

- GARAGE
- OPEN-PLAN LIVING DINING ROOM
- 3 BEDROOMS
- MODERN BATHROOM
- CUL-DE-SAC LOCATION
- CAR PORT
- MODERN KITCHEN
- NO CHAIN !!

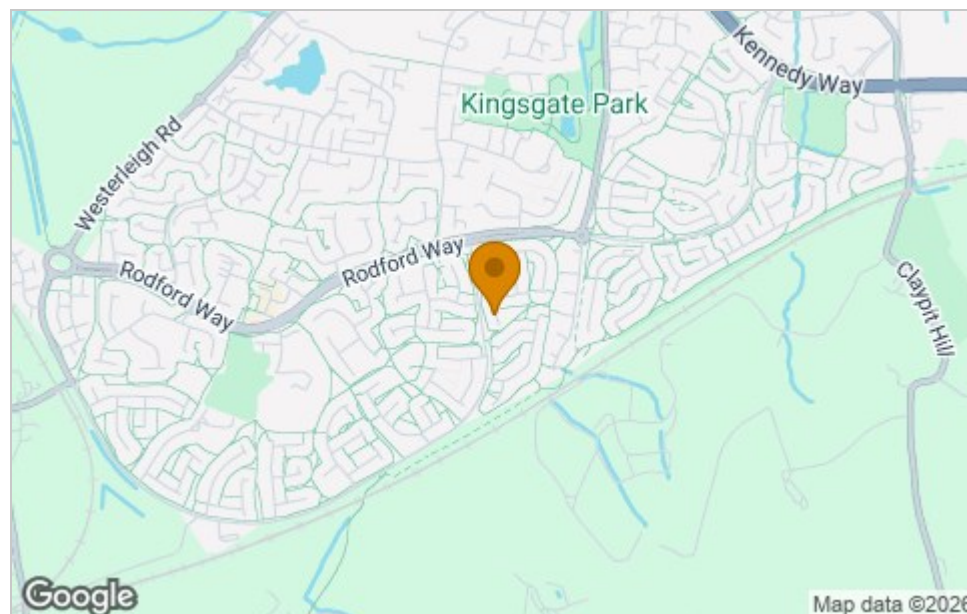




## Floor Plan



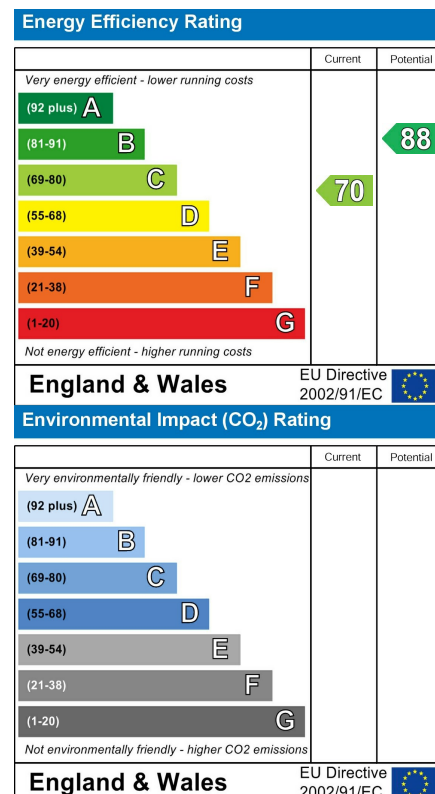
## Area Map



## Viewing

Please contact our House + Co Property (Sales) Office on 0117 907 0020 if you wish to arrange a viewing appointment for this property or require further information.

## Energy Efficiency Graph



These particulars, whilst believed to be accurate are set out as a general outline only for guidance and do not constitute any part of an offer or contract. Intending purchasers should not rely on them as statements of representation of fact, but must satisfy themselves by inspection or otherwise as to their accuracy. No person in this firm's employment has the authority to make or give any representation or warranty in respect of the property.