



The Boot Factory Beaconsfield Road
, Bristol, BS5 8FB

Asking price £300,000



The Boot Factory Beaconsfield Road



Description

Beautifully presented ground floor apartment set within in a private gated development in St George. Just a short walk from St George's Park and Avon View cemetery this lovely home is within walking distance of cafes, bars and independent shops on Redfields Church Road.

Accessed by its own private entrance the property has two bedrooms, a stylish bathroom and a bright open plan living/kitchen. There's a bayed living area, dining space and a contemporary fitted kitchen along one wall creating a sociable living arrangement. Double doors lead out to a private courtyard garden.

Along the hall you'll find a great size main bedroom overlooking the garden and second bedroom currently used as a dressing room and home office.

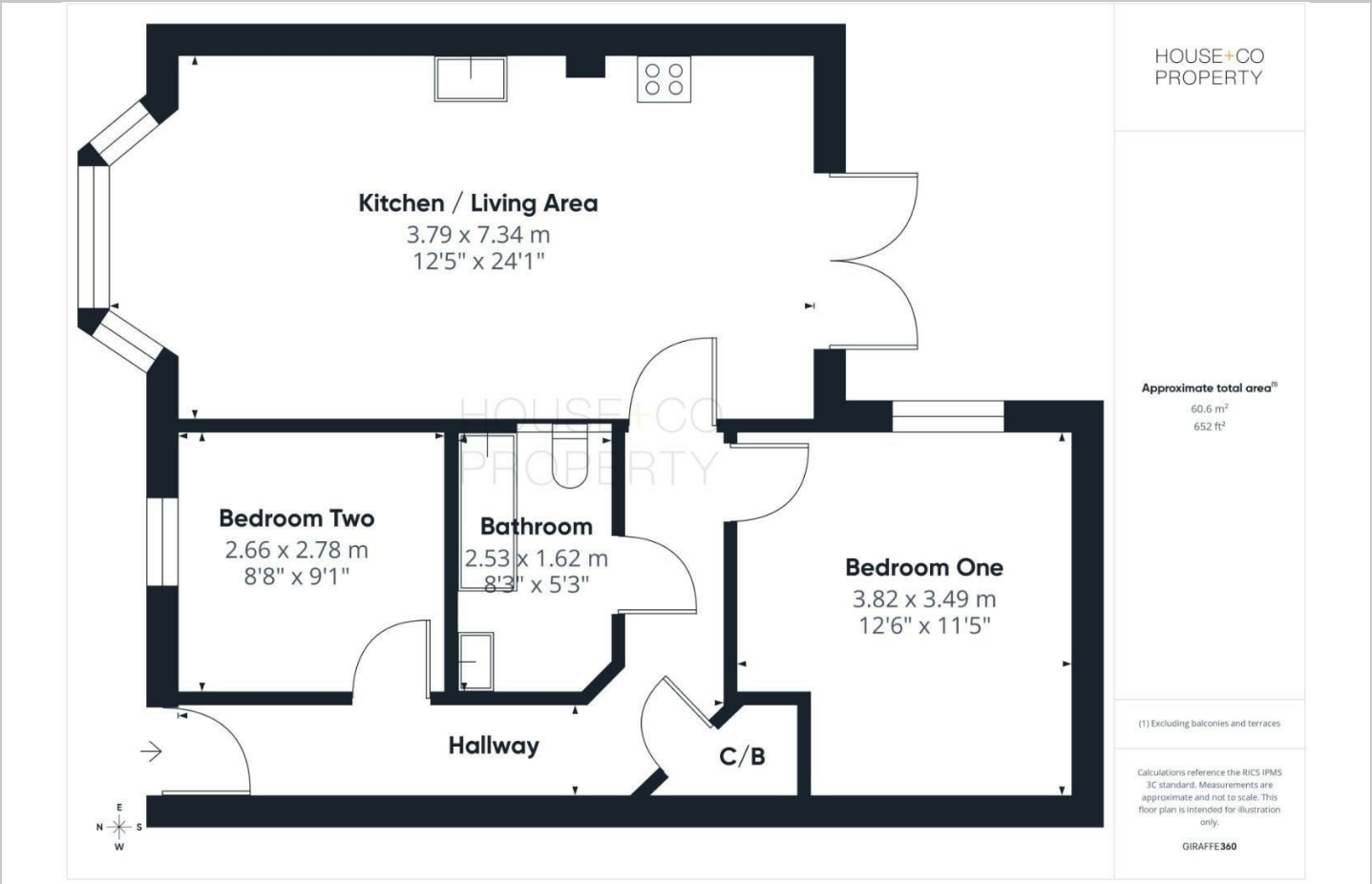
The Boot Factory offers a real sense of community, all within track of the city. Please call to view!

- MODERN GROUND FLOOR APARTMENT
- TWO BEDROOMS
- STYLISH KITCHEN AND DINING
- BATHROOM
- GATED PRIVATE DEVELOPMENT
- BAYED LIVING ROOM
- COURTYARD GARDEN
- CLOSE TO ST GEORGES PARK

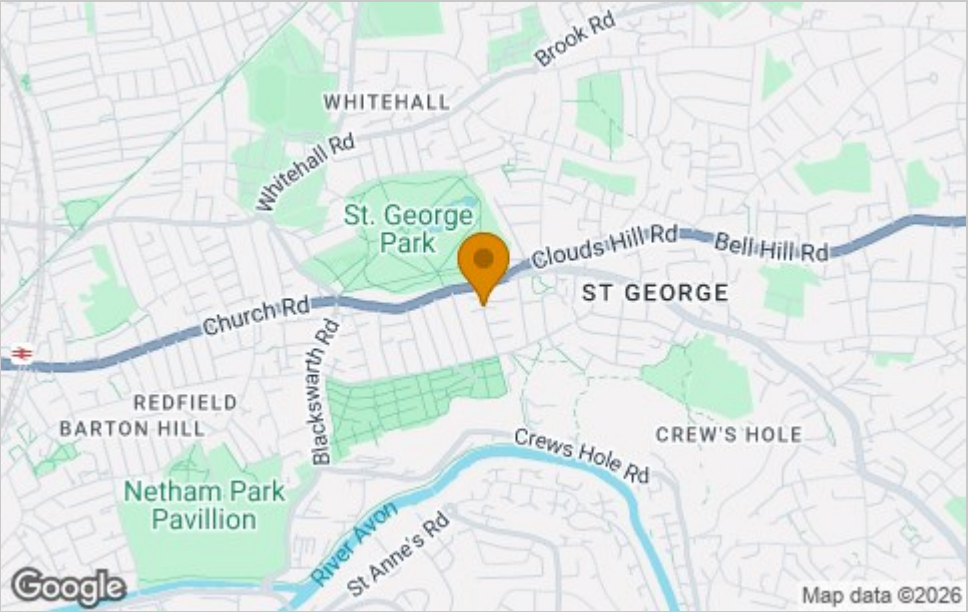




Floor Plan



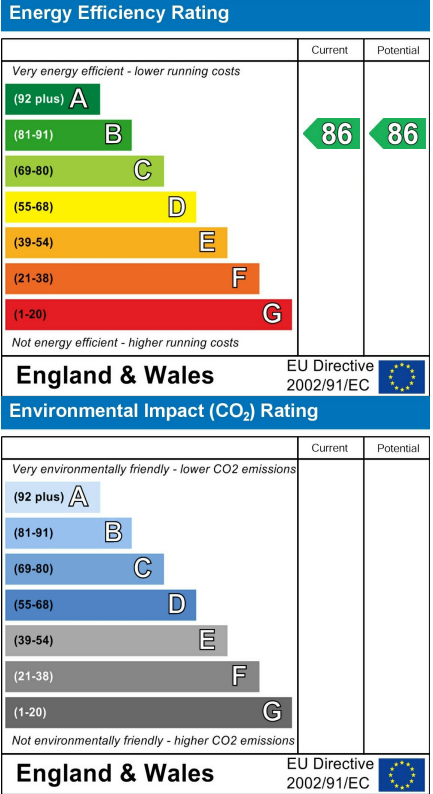
Area Map



Viewing

Please contact our House + Co Property (Sales) Office on 0117 907 0020 if you wish to arrange a viewing appointment for this property or require further information.

Energy Efficiency Graph



These particulars, whilst believed to be accurate are set out as a general outline only for guidance and do not constitute any part of an offer or contract. Intending purchasers should not rely on them as statements of representation of fact, but must satisfy themselves by inspection or otherwise as to their accuracy. No person in this firm's employment has the authority to make or give any representation or warranty in respect of the property.