



6 Salisbury Street

St. George, Bristol, BS5 8EE

**Asking price £340,000**





# 6 Salisbury Street



## Description

Victorian style terrace located just off Church Road In St George. This lovely home is within walking distance of St George's Park and lots of independent shops, cafes and bars.

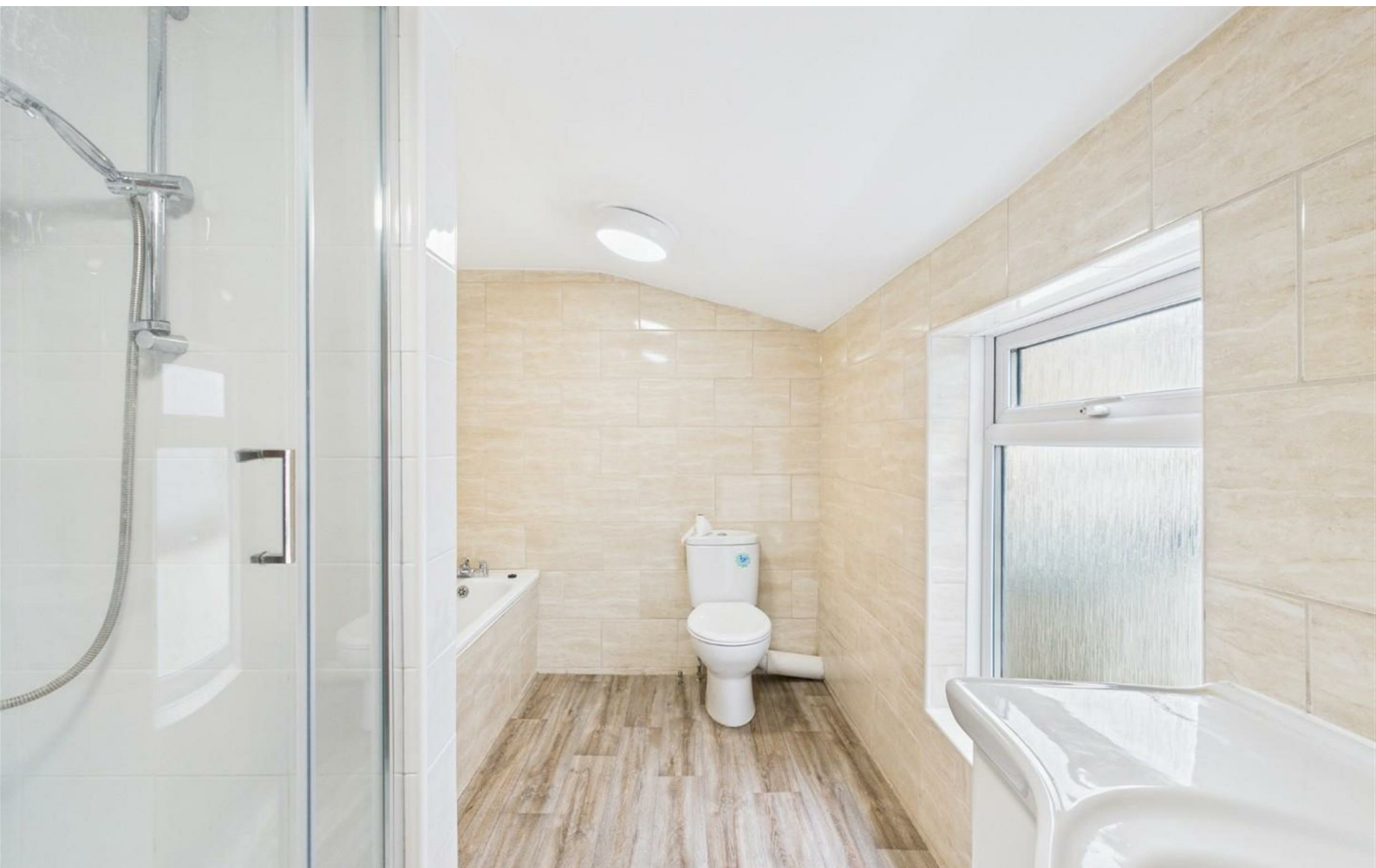
Offering open plan living and dining room with sliding doors to the garden. There's a stylish extended kitchen with built in cooker and with plenty of light from dual aspect windows and a velux.

Upstairs you'll find two double bedrooms and a generous sized bathroom with separate shower and bath.

Further benefits include gas central and double glazing and the property is offered with no onward chain. A great first time buy close to local routes into the city. Please call to view!

- VICTORIAN TERRACE
- TWO DOUBLE BEDROOMS
- DINING SPACE
- UPSTAIRS BATHROOM
- NO CHAIN
- CLOSE TO ST GEORGES PARK
- OPEN PLAN LIVING
- STYLISH EXTENDED KITCHEN
- COURTYARD GARDEN



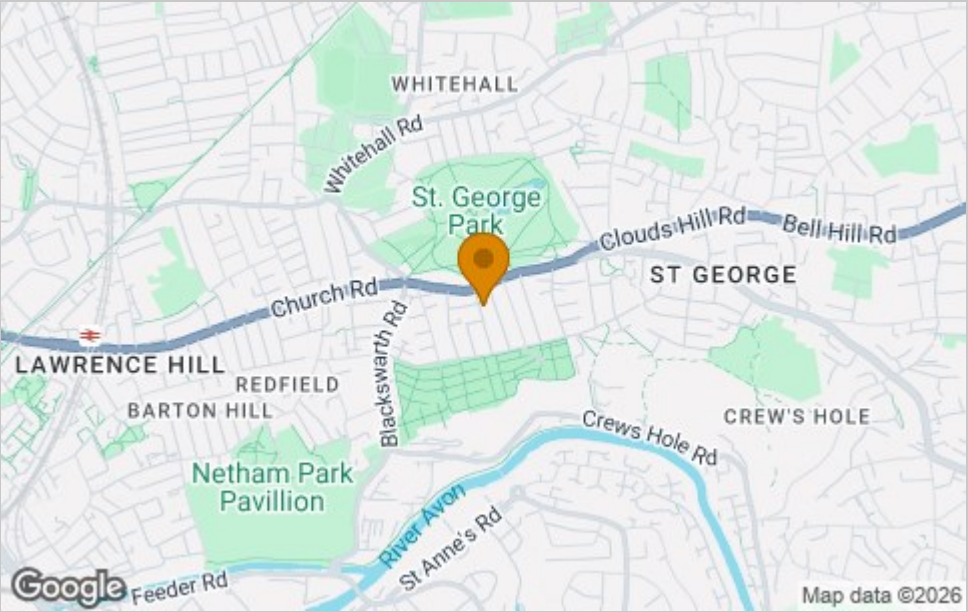




Floor Plan



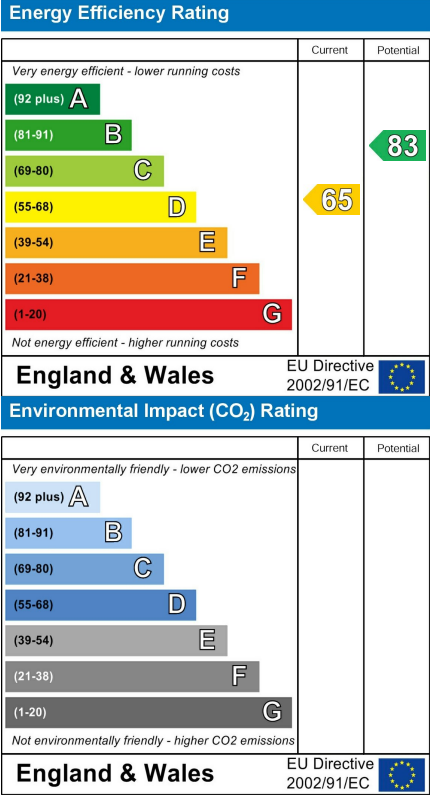
Area Map



Viewing

Please contact our House + Co Property (Sales) Office on 0117 907 0020 if you wish to arrange a viewing appointment for this property or require further information.

Energy Efficiency Graph



These particulars, whilst believed to be accurate are set out as a general outline only for guidance and do not constitute any part of an offer or contract. Intending purchasers should not rely on them as statements of representation of fact, but must satisfy themselves by inspection or otherwise as to their accuracy. No person in this firm's employment has the authority to make or give any representation or warranty in respect of the property.