

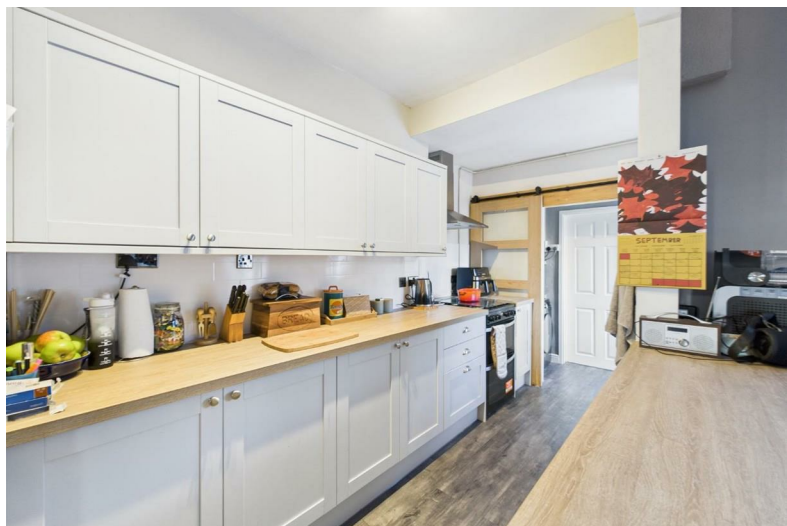
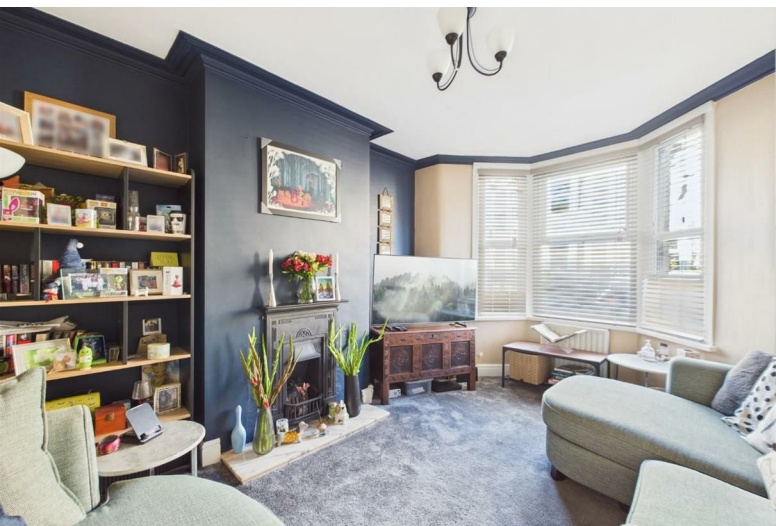


38 Witchell Road
Redfield, Bristol, BS5 9LF

Asking price £365,000



38 Witchell Road



Description

This desirable period terrace house offers a perfect blend of comfort and convenience. Spanning approximately 980 square feet, the property boasts two inviting reception rooms. The open-plan living area features a delightful bayed lounge that seamlessly flows into the dining space, creating a warm and welcoming atmosphere.

The recently refitted kitchen is a highlight of the home, providing a modern touch while maintaining the character of the property. A contemporary bathroom is conveniently located off the rear lobby. The first floor accommodates three well-proportioned bedrooms.

Outside, features an Westerly enclosed low-maintenance garden. The location is particularly appealing, situated just off Church Road, where a variety of bars, cafes, and amenities await. Additionally, the picturesque St George Park is merely a short

- JUST OFF CHURCH ROAD
- OPEN-PLAN LIVING
- MODERN BATHROOM
- RECENT UPVC WINDOWS AND DOORS
- THREE BEDROOMS
- MODERN FITTED KITCHEN
- WESTERLY REAR GARDEN
- A STROLL TO THE LOCAL CAFES, BARS AND RESTAURANTS

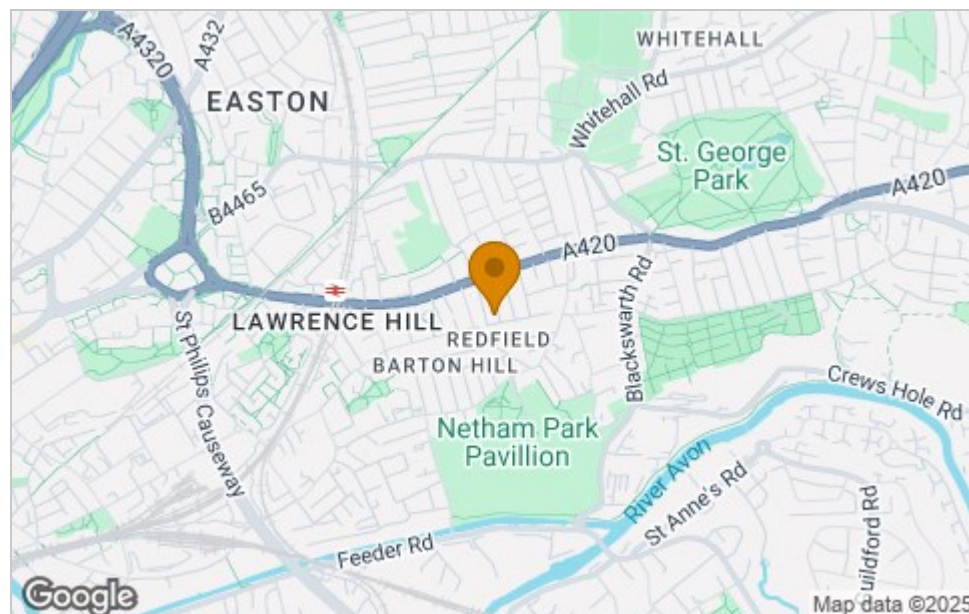




Floor Plan



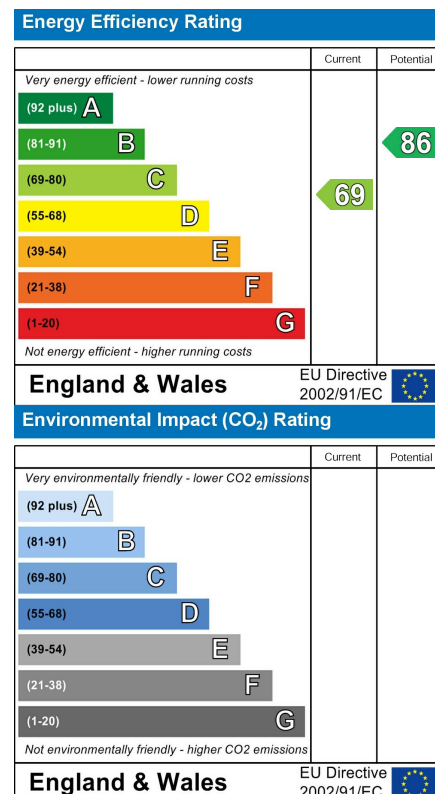
Area Map



Viewing

Please contact our House + Co Property (Sales) Office on 0117 907 0020 if you wish to arrange a viewing appointment for this property or require further information.

Energy Efficiency Graph



These particulars, whilst believed to be accurate are set out as a general outline only for guidance and do not constitute any part of an offer or contract. Intending purchasers should not rely on them as statements of representation of fact, but must satisfy themselves by inspection or otherwise as to their accuracy. No person in this firm's employment has the authority to make or give any representation or warranty in respect of the property.