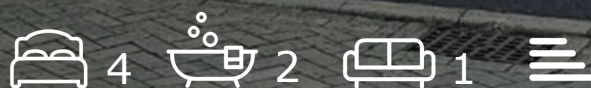




67 Snowberry Walk
, Bristol, BS5 7DG

**Offers in excess of
£415,000**



67 Snowberry Walk



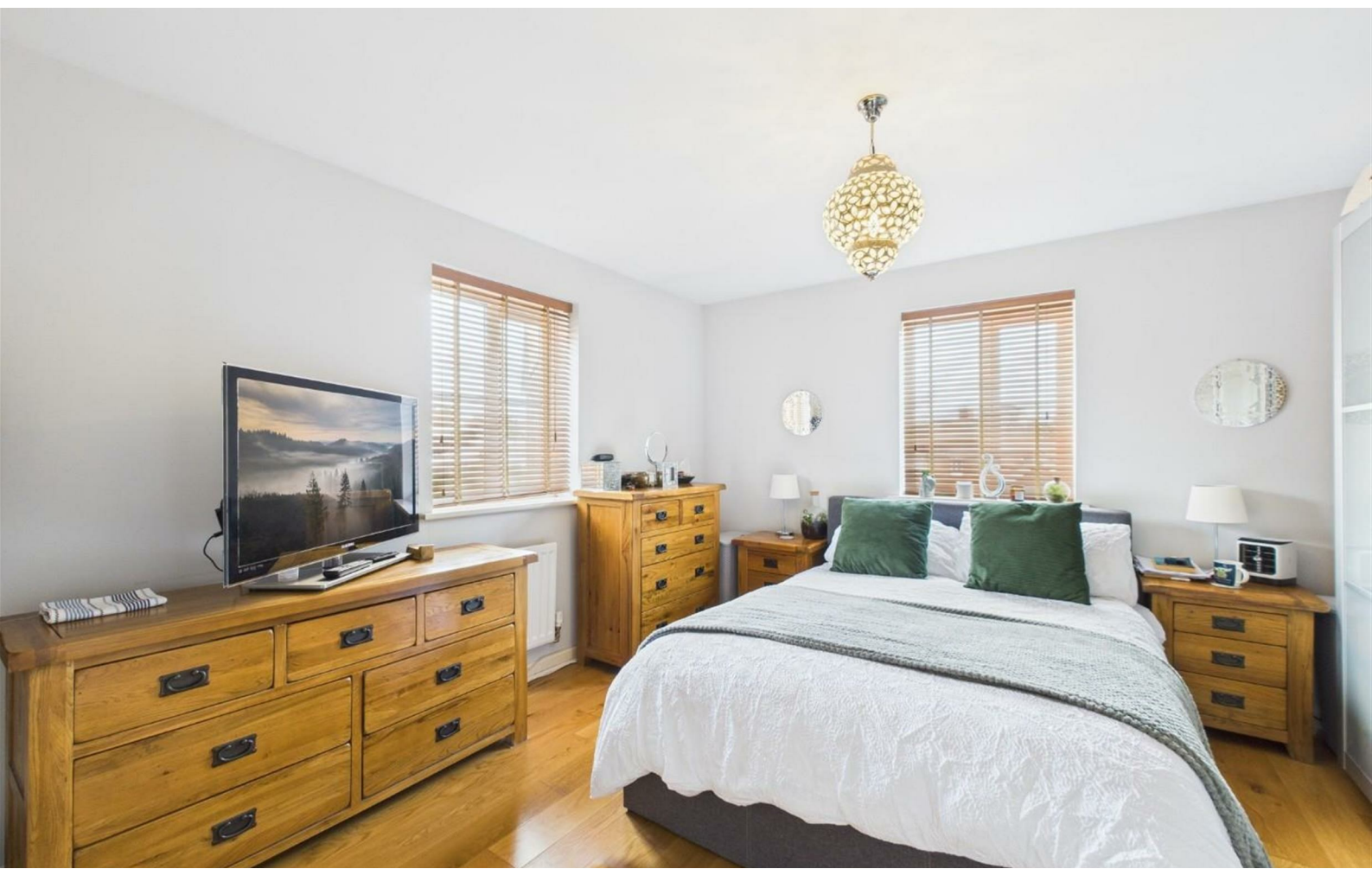
Description

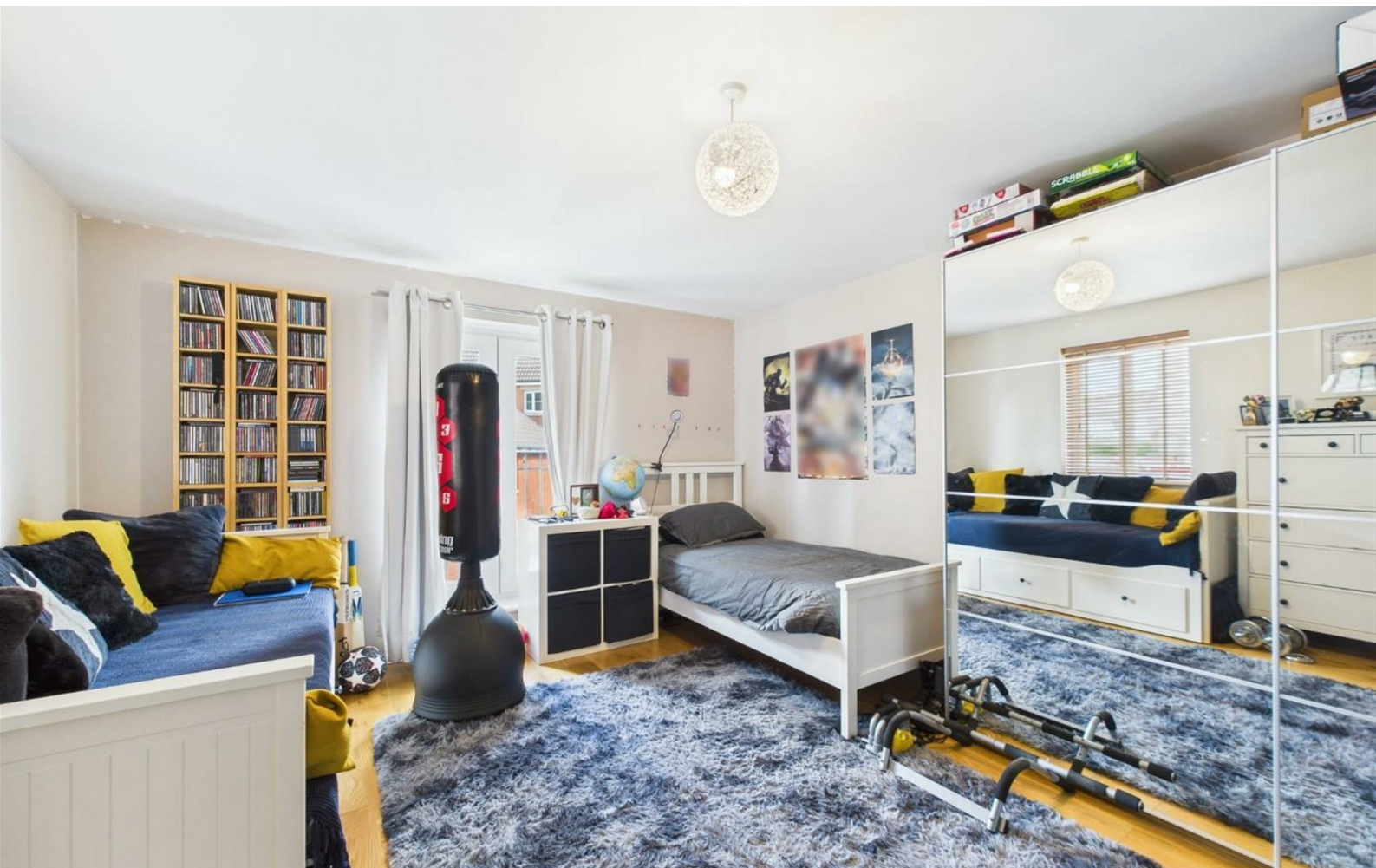
Welcome to this lovely 4 bedroom end of terrace home nestled away in a contemporary development in St. George and only a stones throw away from St. George Park. With schools and amenities nearby, this property is perfect for first time buyers and families alike.

The property, built in 2010, comprises of an entrance hallway leading to a modern kitchen diner. The downstairs also offers a cosy living room and a WC. On the first floor you'll find a spacious double bedroom with a Juliette balcony, a single bedroom and a family bathroom. On the second floor you'll find a master bedroom featuring an en suite and a double bedroom with built in storage.

To the rear you'll find a lovely Westerly facing garden with a decked area and side access. The property also boasts two parking spaces and a private garage.

- 4 BEDROOM END OF TERRACE
- GARAGE
- NEAR ST. GEORGE PARK
- MODERN KITCHEN DINER
- DOWNSTAIRS WC
- TWO PARKING SPACES
- WESTERLY FACING GARDEN
- LIVING ROOM
- MODERN BATHROOM
- MASTER WITH EN SUITE

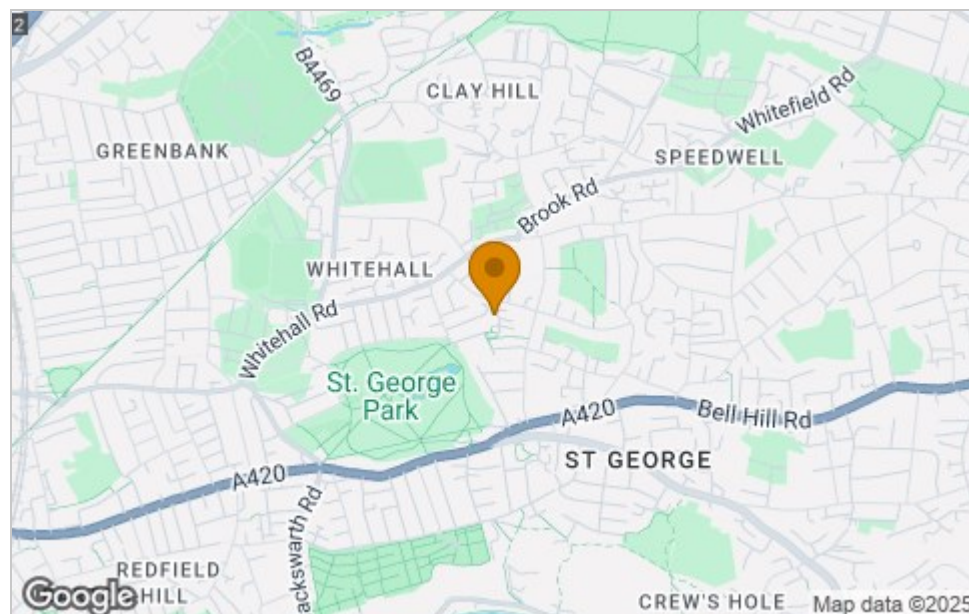




Floor Plan



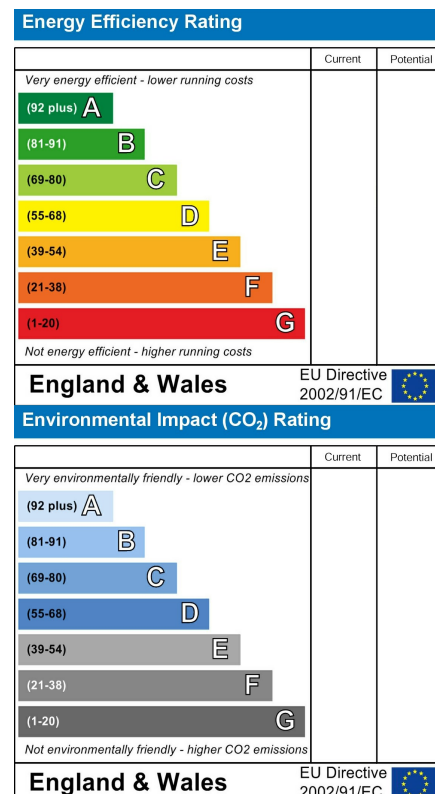
Area Map



Viewing

Please contact our House + Co Property (Sales) Office on 0117 907 0020 if you wish to arrange a viewing appointment for this property or require further information.

Energy Efficiency Graph



These particulars, whilst believed to be accurate are set out as a general outline only for guidance and do not constitute any part of an offer or contract. Intending purchasers should not rely on them as statements of representation of fact, but must satisfy themselves by inspection or otherwise as to their accuracy. No person in this firm's employment has the authority to make or give any representation or warranty in respect of the property.