



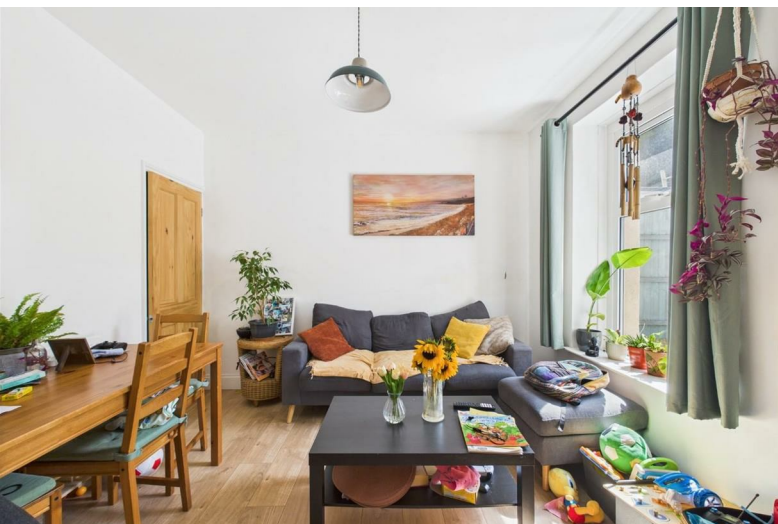
20 Lower Station Road

Fishponds, Bristol, BS16 3HS

Asking price £300,000

2 1 2 D

20 Lower Station Road



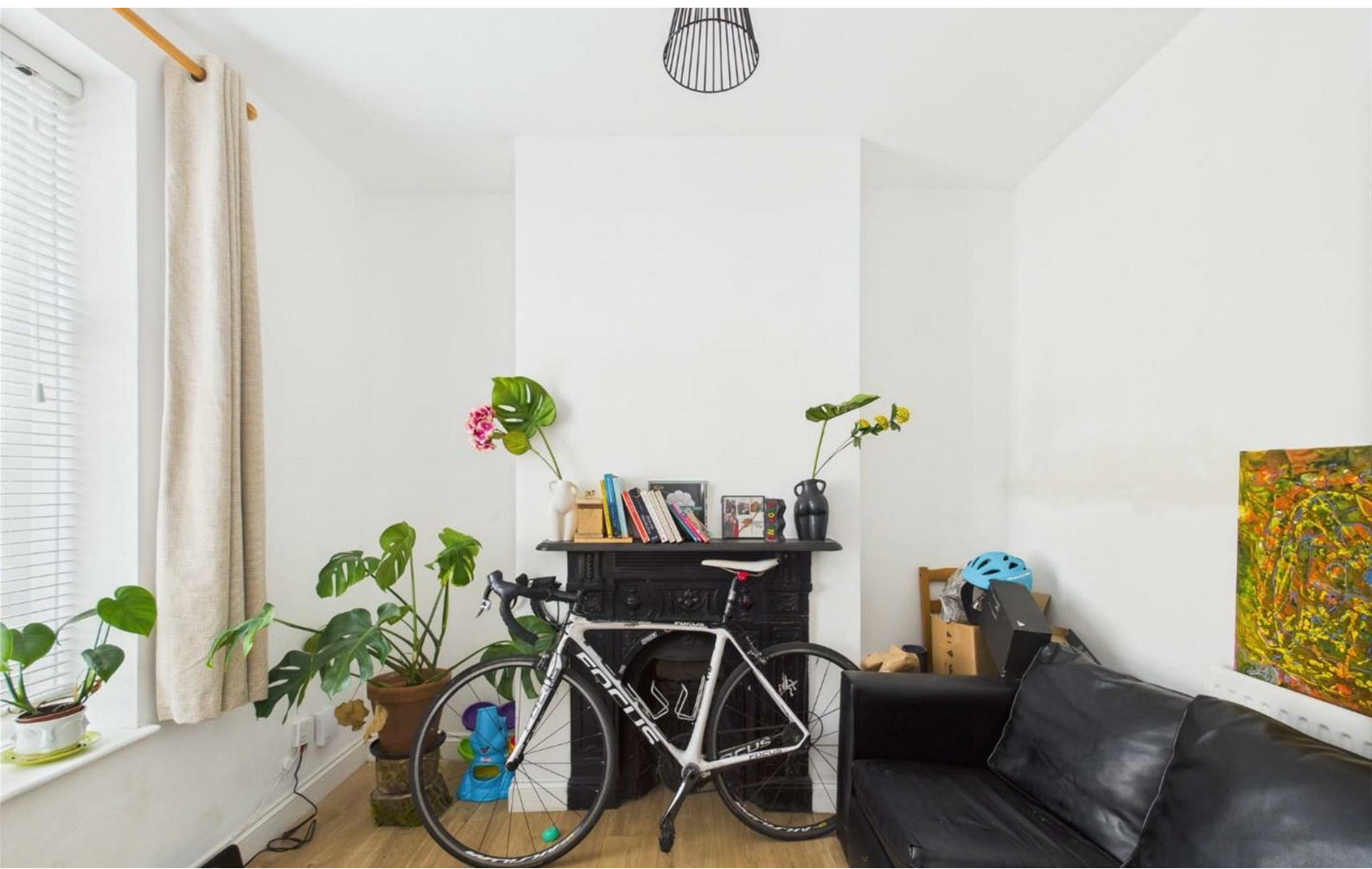
Description

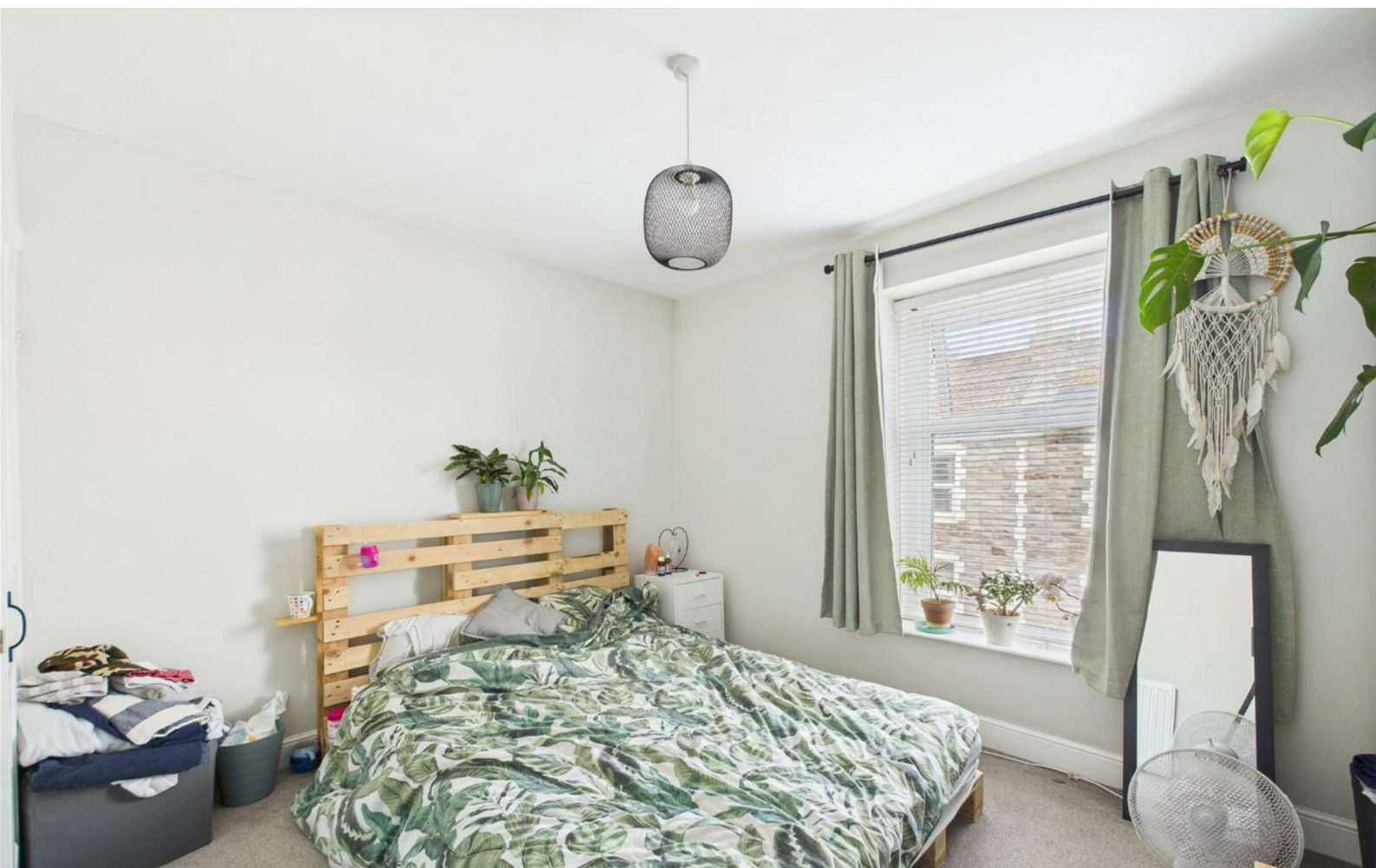
Lower Station Road is a sought after location, nestled away in the heart of the Fishponds community within an arm's reach of the Bristol to Bath cycle path, local high street amenities and commuting routes to the City Centre sits this cottage-style two bedroom period home; ideal for first time buyers and investors alike!

The property comprises of an entrance hallway leading to two separate reception rooms and a contemporary kitchen area to the ground floor, along with two bedrooms and a family modern bathroom to the first floor.

Further benefits include gas central heating, double glazing, integrated kitchen appliances, period features, south-facing low-maintenance rear garden and NO CHAIN!

- NO CHAIN
- TWO BEDROOMS
- TWO RECEPTION ROOMS
- GAS CENTRAL HEATING
- COTTAGE-STYLE
- SOUTH FACING GARDEN
- IDEAL FOR FTB
- BEAUTIFULLY PRESENTED
- DOUBLE GLAZING

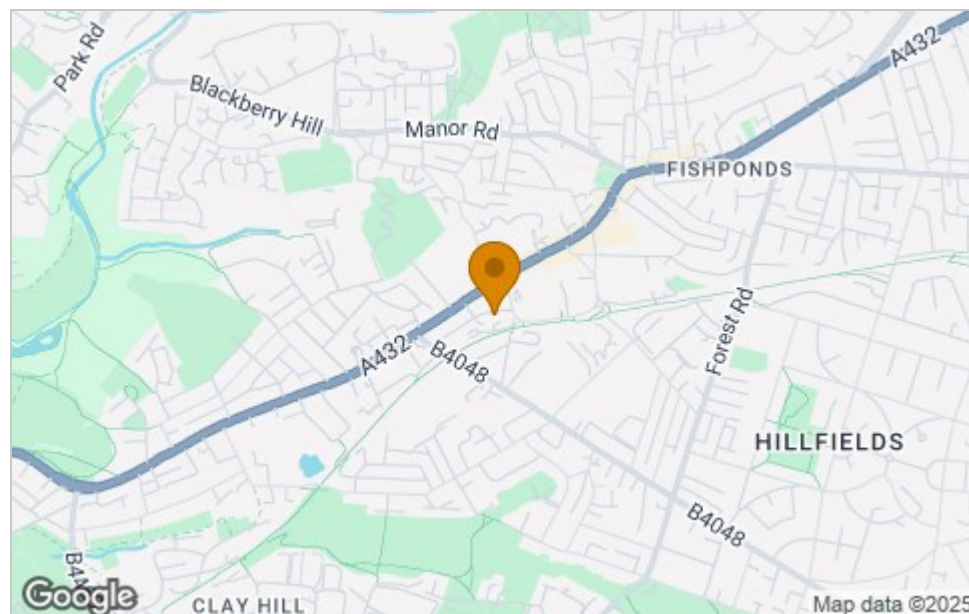




Floor Plan



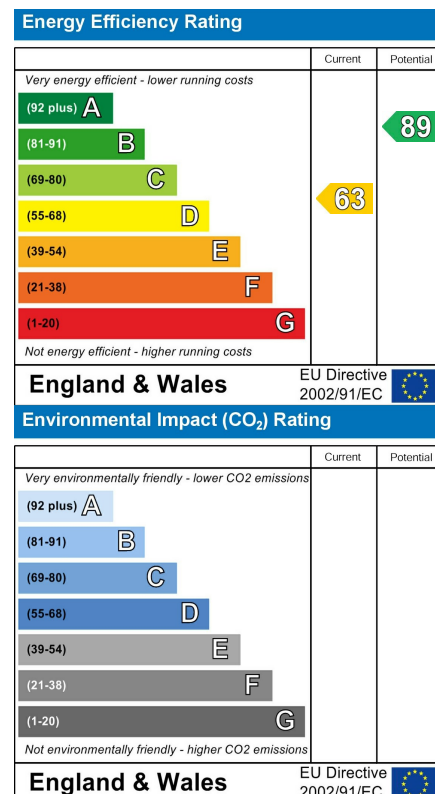
Area Map



Viewing

Please contact our House + Co Property (Sales) Office on 0117 907 0020 if you wish to arrange a viewing appointment for this property or require further information.

Energy Efficiency Graph



These particulars, whilst believed to be accurate are set out as a general outline only for guidance and do not constitute any part of an offer or contract. Intending purchasers should not rely on them as statements of representation of fact, but must satisfy themselves by inspection or otherwise as to their accuracy. No person in this firm's employment has the authority to make or give any representation or warranty in respect of the property.