

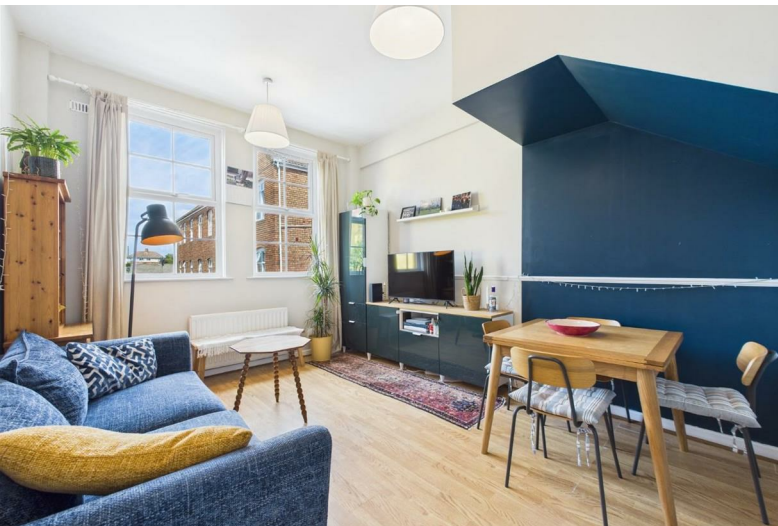


16 Frost and Reed House Albert Grove South
, Bristol, BS5 7HU

Asking price £285,000



16 Frost and Reed House Albert Grove South



Description

Welcome to this well-presented 2 bed Maisonette conversion nestled away in St. George and within walking distance of the picturesque St. George Park. With Church Road and all it's cafes, shop & amenities within reach, this property is ideal for first time buyers and investors alike.

This lovely light and airy home with its high ceilings offers a period look blended with a contemporary finish. Comprising of inner hallway leading to a modern fitted kitchen. The ground floor also offers a spacious living area. Upstairs you'll find two double bedrooms and a modern bathroom. The property also features a secure allocated parking space and it's own private entrance!

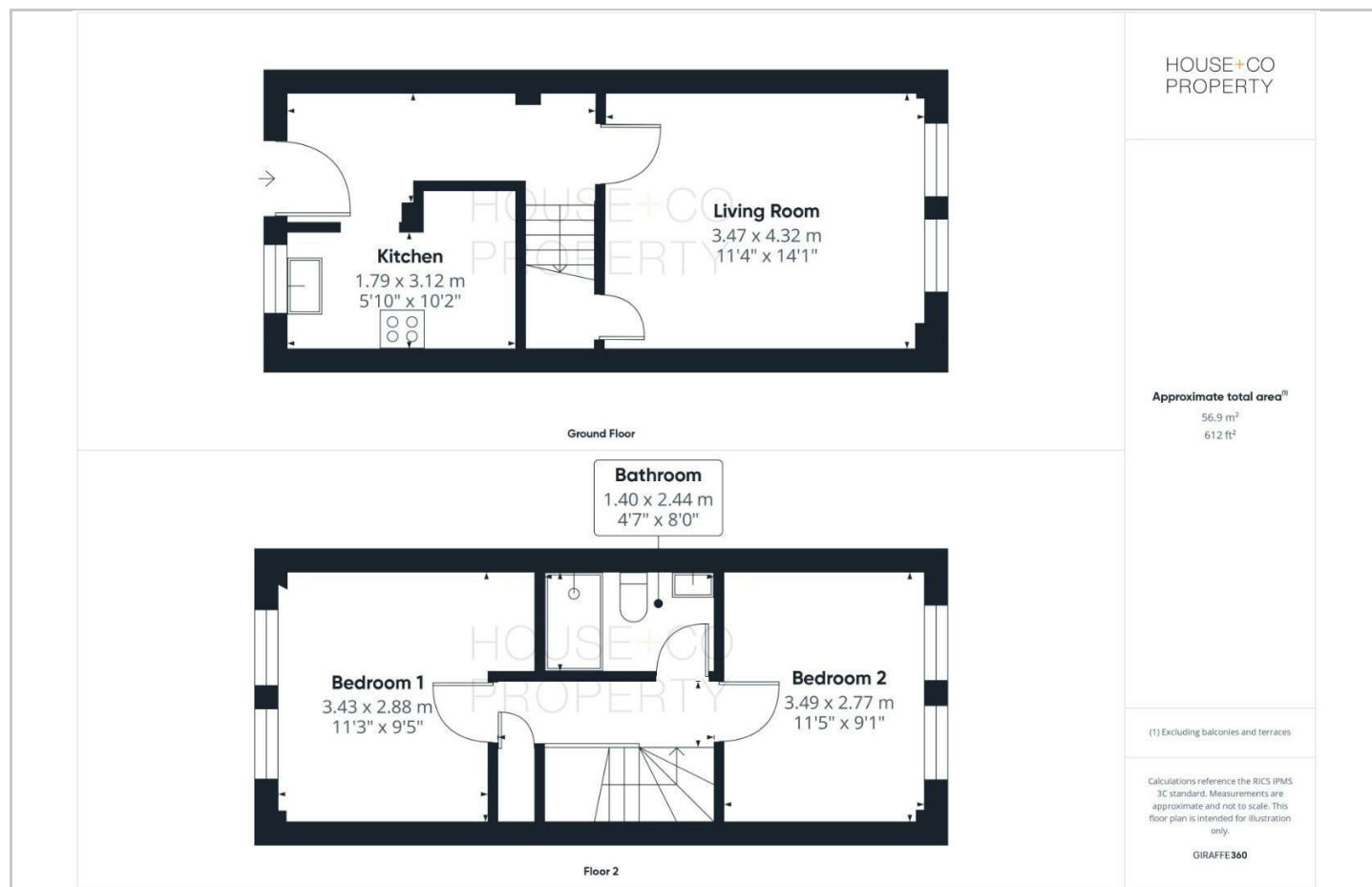
Further benefits include double glazing, gas central heating from a combination boiler and much more! Don't miss out on making this gem your own, call now to book a viewing !!

- MAISONETTE CONVERSION
- ALLOCATED PARKING
- MODERN KITCHEN
- SPACIOUS LIVING SPACE
- GOOD TRANSPORT LINKS
- 2 DOUBLE BEDROOMS
- PRIVATE ENTRANCE
- ST. GEORGE PARK WITHIN REACH
- MODERN BATHROOM
- DOUBLE GLAZING

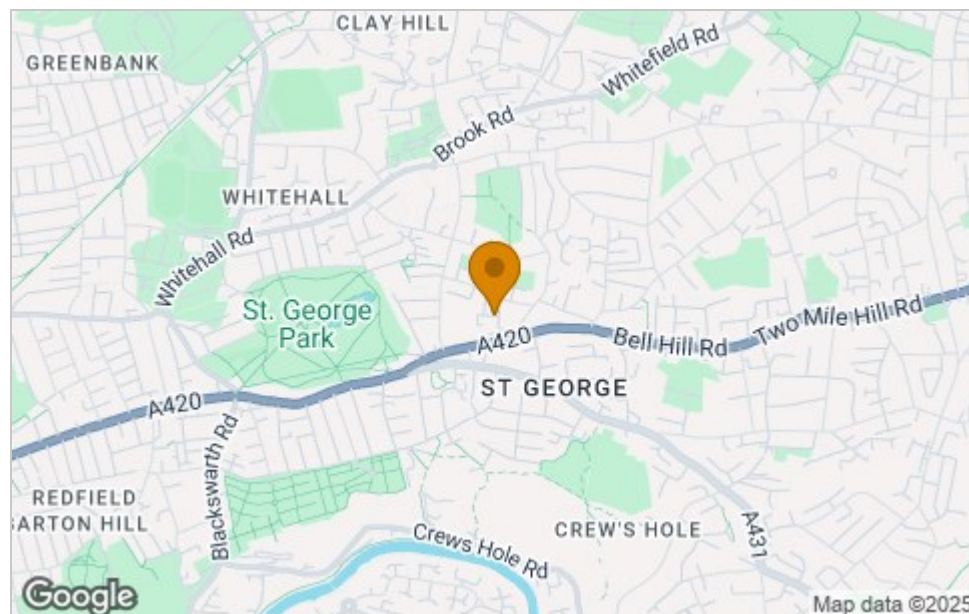




Floor Plan



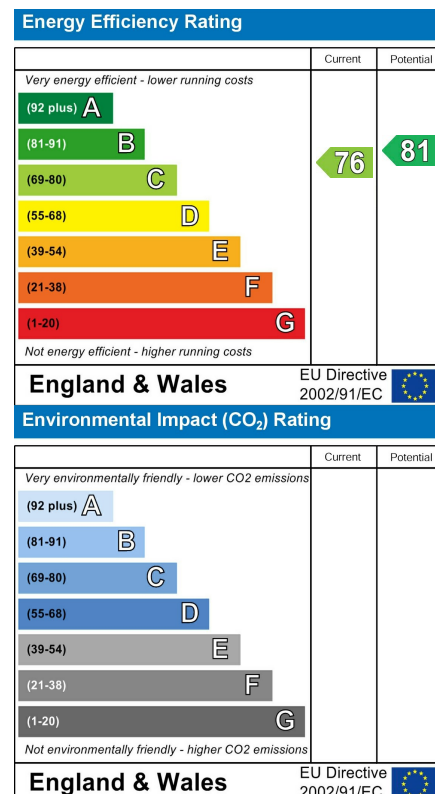
Area Map



Viewing

Please contact our House + Co Property (Sales) Office on 0117 907 0020 if you wish to arrange a viewing appointment for this property or require further information.

Energy Efficiency Graph



These particulars, whilst believed to be accurate are set out as a general outline only for guidance and do not constitute any part of an offer or contract. Intending purchasers should not rely on them as statements of representation of fact, but must satisfy themselves by inspection or otherwise as to their accuracy. No person in this firm's employment has the authority to make or give any representation or warranty in respect of the property.