



7 Victoria Place Pilemarsh

Redfield, Bristol, BS5 9NP

Asking price £249,995



7 Victoria Place Pilemarsh



Description

Ideal for first time buyers sits this well presented spacious and well proportioned two bedroom first floor purpose built modern apartment, located within walking distance of the popular St George's Park greenery along with the vibrant Church Road five star rated amenities, and walking distance of the City Centre.

The property comprises of an entrance hallway leading to a very spacious open plan living area with stylish recently installed kitchenette with pargé breakfast bar, two double bedrooms with master ensuite shower room and a family bathroom.

Further benefits include; double glazing, enclosed communal garden area, off street parking and NO CHAIN!

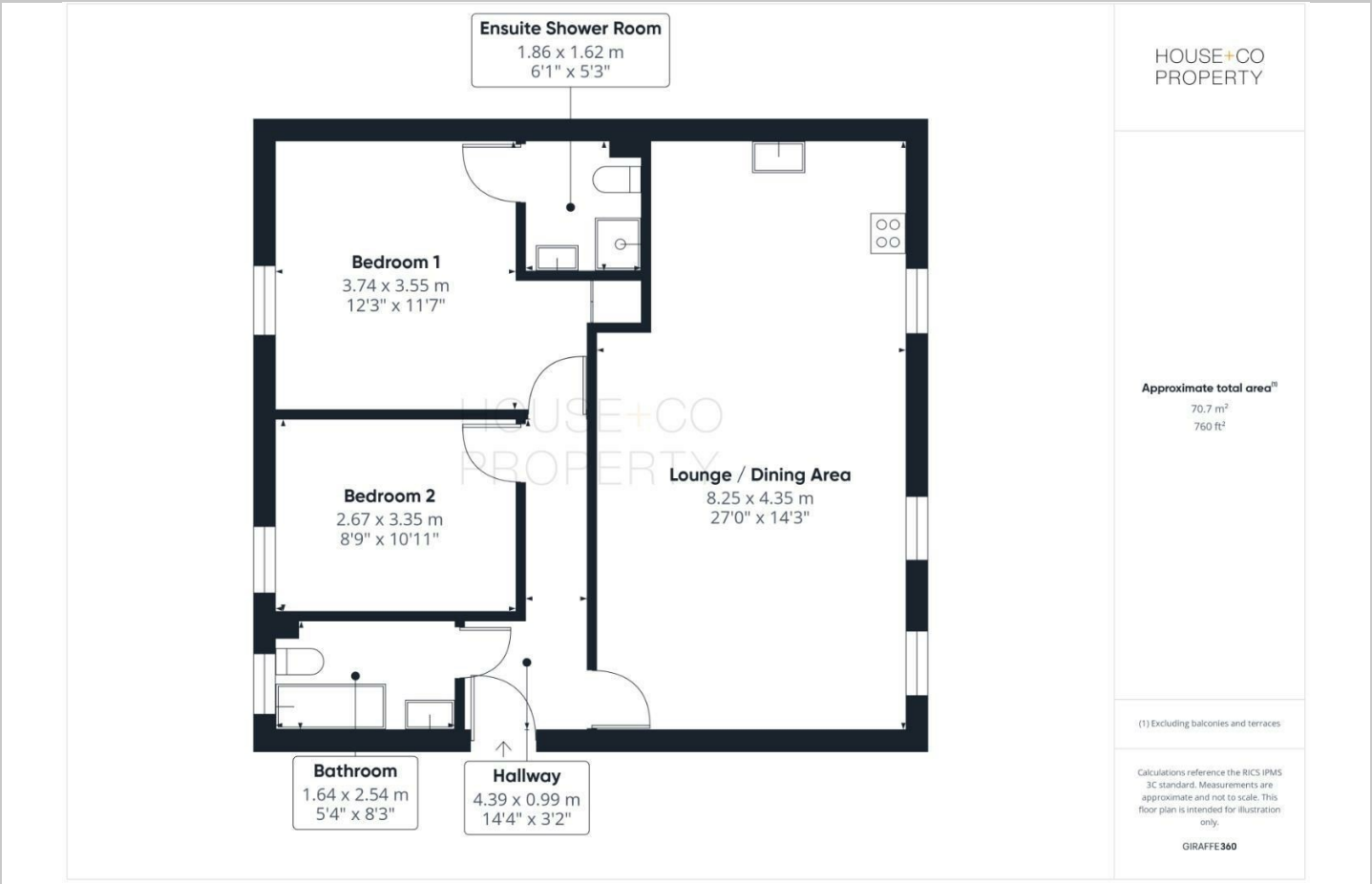
Tenure: 125yrs leasehold commencing from 2007, £141.00 pcm approx (£1,692 pa) service/maintenance charges, £250.00PA ground rent and Council Tax A band.

- LARGER THAN AVERAGE MODERN FLAT
- SECURE ALLOCATED PARKING
- 2 DOUBLE BEDROOMS
- UPVC DOUBLE GLAZED
- CLOSE TO CHURCH ROADS POULAR SHOPS AND AMENITIES
- FIRST FLOOR PROPERTY
- WALKING DISTANCE OF ST GEORGES PARK
- FAMILY BATHROOM AND ENSUITE SHOWER ROOM
- WELL PRESENTED AND LOVELY MODERN STYLE
- GREAT FOR FIRST TIME BUYERS

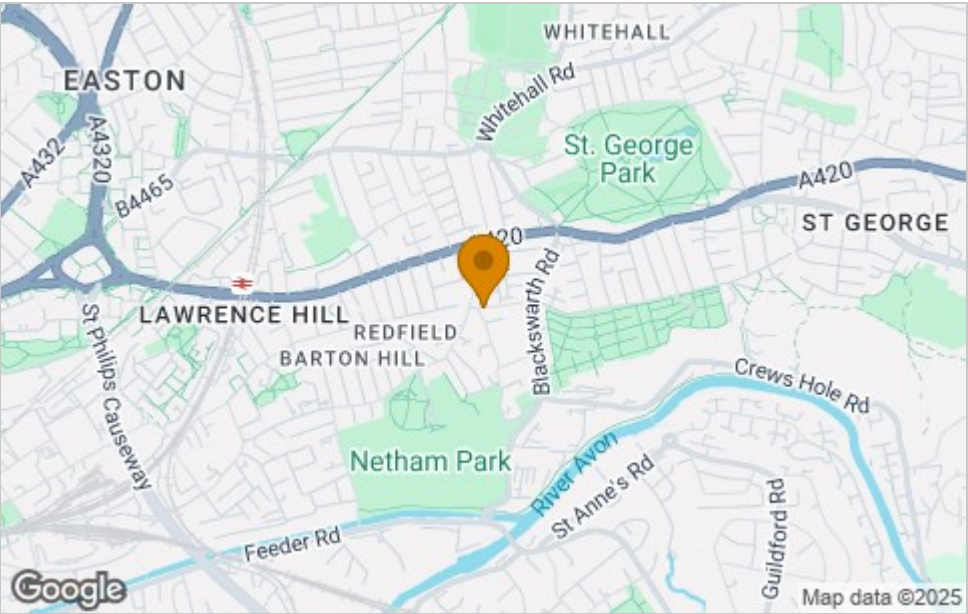




Floor Plan



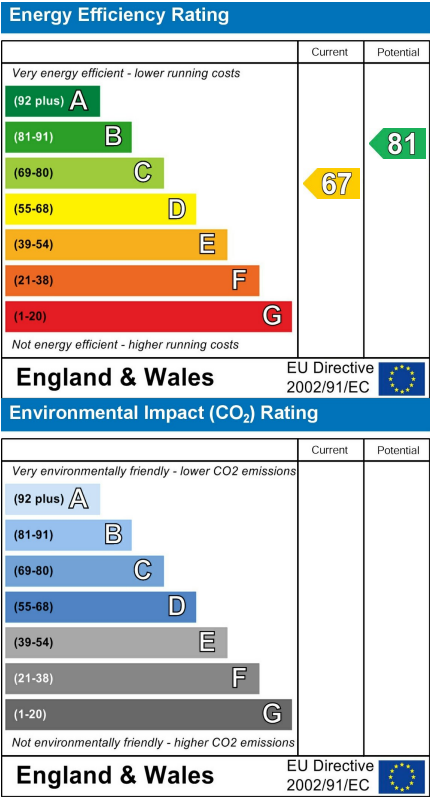
Area Map



Viewing

Please contact our House + Co Property (Sales) Office on 0117 907 0020 if you wish to arrange a viewing appointment for this property or require further information.

Energy Efficiency Graph



These particulars, whilst believed to be accurate are set out as a general outline only for guidance and do not constitute any part of an offer or contract. Intending purchasers should not rely on them as statements of representation of fact, but must satisfy themselves by inspection or otherwise as to their accuracy. No person in this firm's employment has the authority to make or give any representation or warranty in respect of the property.