



137 Whitehall Road
, Bristol, BS5 9BJ

Asking price £325,000



137 Whitehall Road



Description

This charming end of terrace period home situated in Redfield is within walking distance of the picturesque St. George Park and only a stroll away from the increasingly popular Church Road and all it's cafes, pubs and shops. With good transport links into the city and no onward chain, this property is ideal for first time buyers.

As you enter, you are greeted by an open plan living and dining room featuring lovely french doors opening out onto the garden. To the rear you'll find a kitchen and bathroom. Upstairs you'll find a spacious full-width master bedroom and two more double bedrooms! The garden offers space for table and chairs and lovely flower beds.

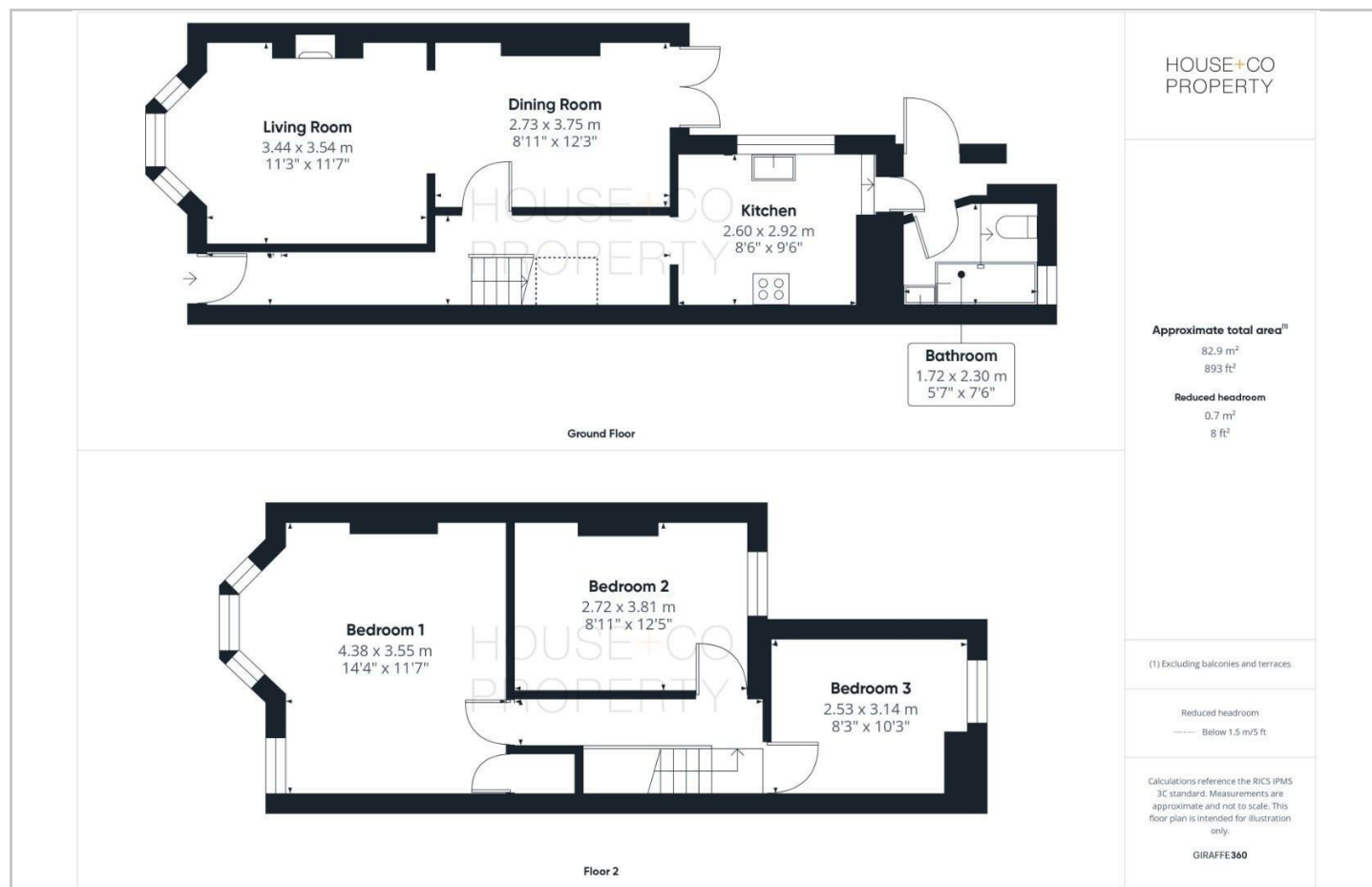
Further benefits include double glazing, gas central heating and much more! Call now to book a viewing !!

- END OF TERRACE
- OPEN PLAN LOUNGE & DINING ROOM
- 3 DOUBLE BEDROOMS
- BATHROOM
- GOOD TRANSPORT LINKS
- NO CHAIN !!
- NEW CARPETS
- KITCHEN
- GARDEN WITH FLOWER BEDS
- DOUBLE GLAZING & GAS CENTRAL HEATING

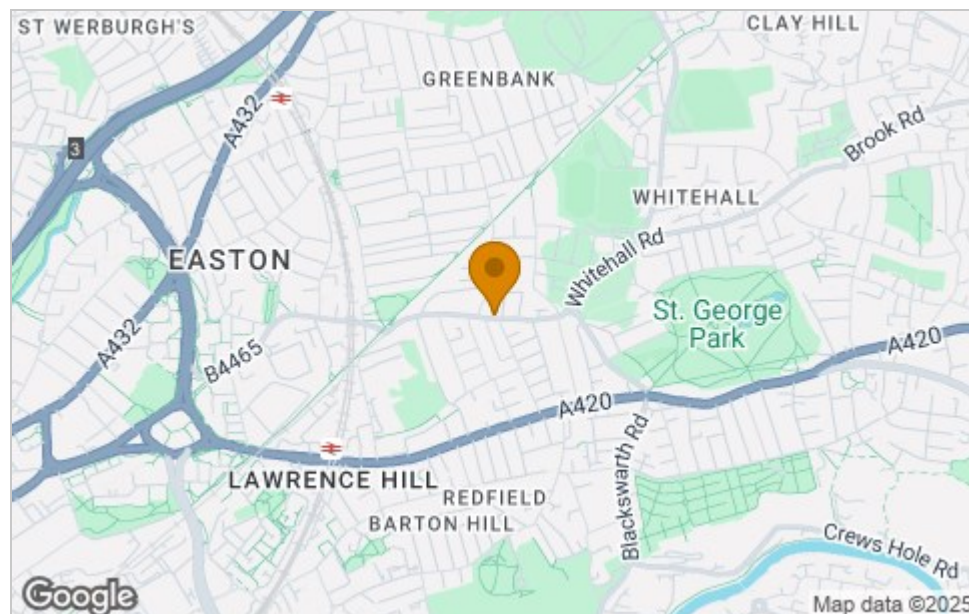




Floor Plan



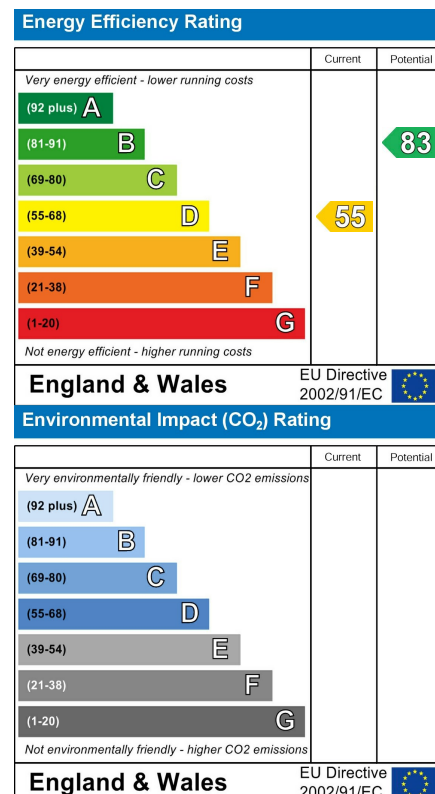
Area Map



Viewing

Please contact our House + Co Property (Sales) Office on 0117 907 0020 if you wish to arrange a viewing appointment for this property or require further information.

Energy Efficiency Graph



These particulars, whilst believed to be accurate are set out as a general outline only for guidance and do not constitute any part of an offer or contract. Intending purchasers should not rely on them as statements of representation of fact, but must satisfy themselves by inspection or otherwise as to their accuracy. No person in this firm's employment has the authority to make or give any representation or warranty in respect of the property.