

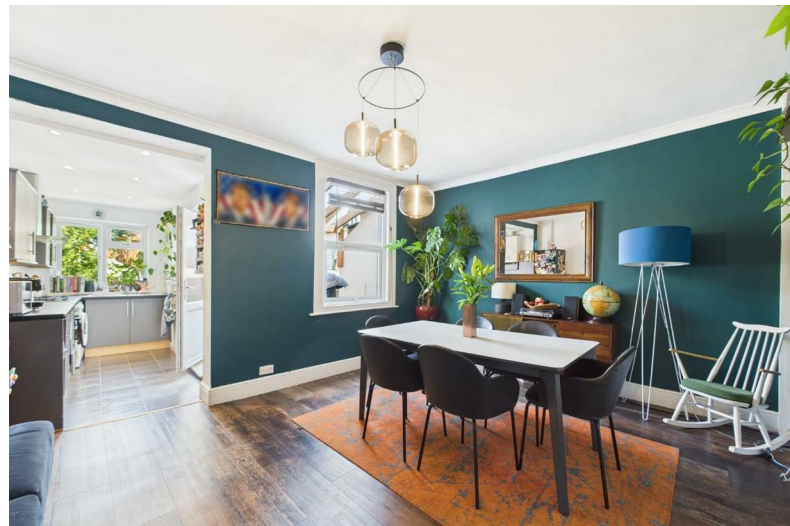


45 Avon Park
Redfield, Bristol, BS5 9RR

Asking price £375,000



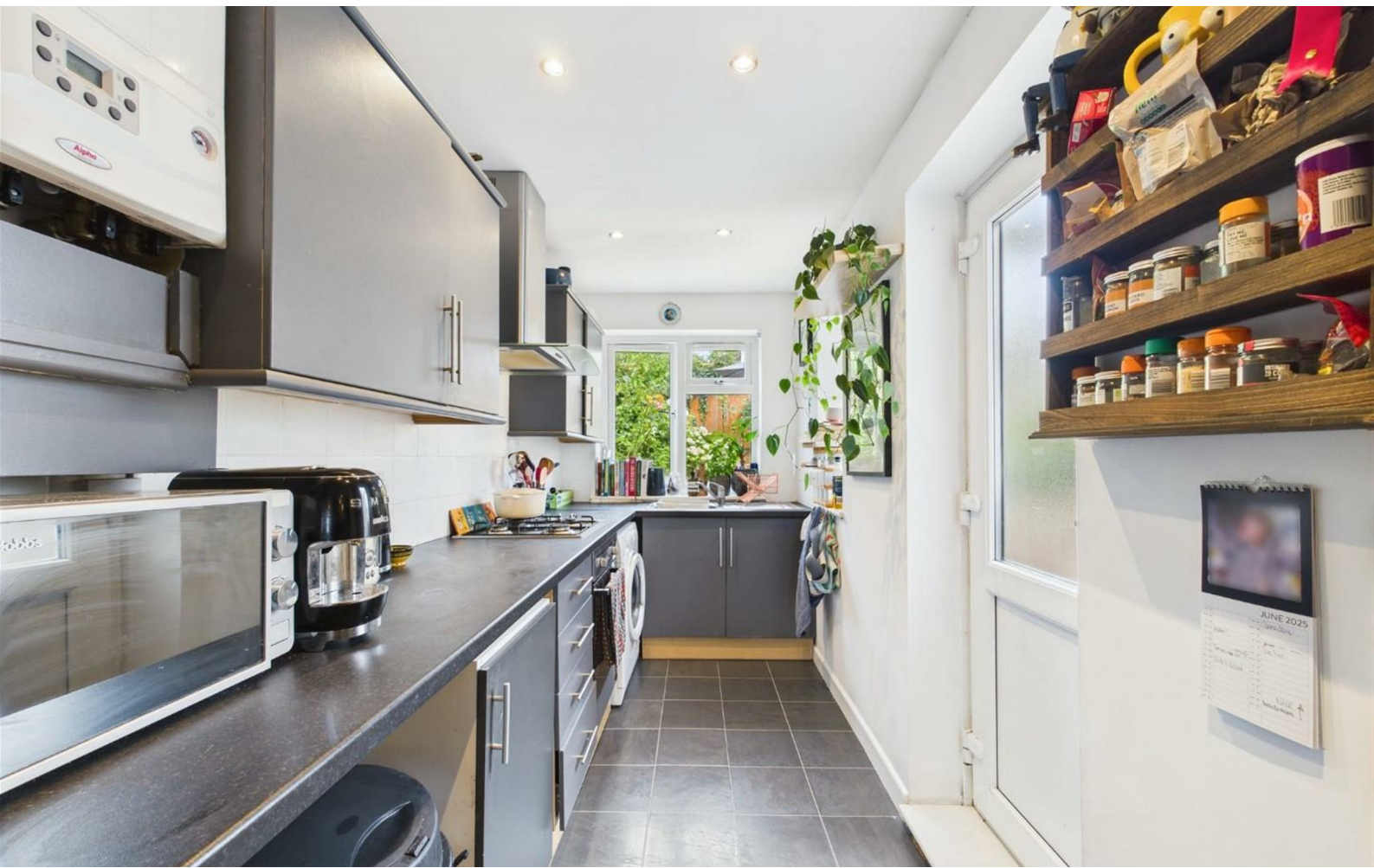
45 Avon Park



Description

Beautifully presented Victorian terrace located on a tucked away street next to Netham Park. This lovely home has a spacious feel and comprises a bayed living room, a full width dining/living room which opens out onto a modern fitted kitchen creating a sociable space. Upstairs you'll find two generous double bedrooms and a stylish bathroom with shower over the bath. Outside is a pretty courtyard garden with patio seating area and plenty of plants and greenery. Ideally situated just a short walk from Church Road with its many eateries, independent shops and bars this will make an ideal first time buy for those looking to enjoy all that Redfield has to offer. Please call to view!

- VICTORIAN TERRACE
- TWO DOUBLE BEDROOMS
- FULL WIDTH DINING
- STYLISH UPSTAIRS BATHROOM
- NEXT TO NETHAM PARK
- BAYED LOUNGE
- MODERN KITCHEN
- PRETTY COURTYARD GARDEN

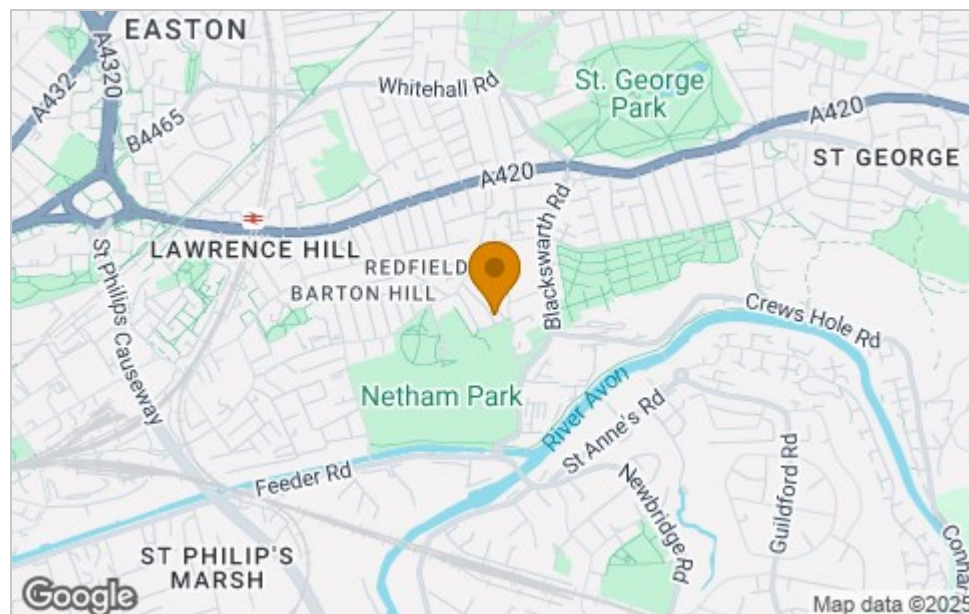




Floor Plan



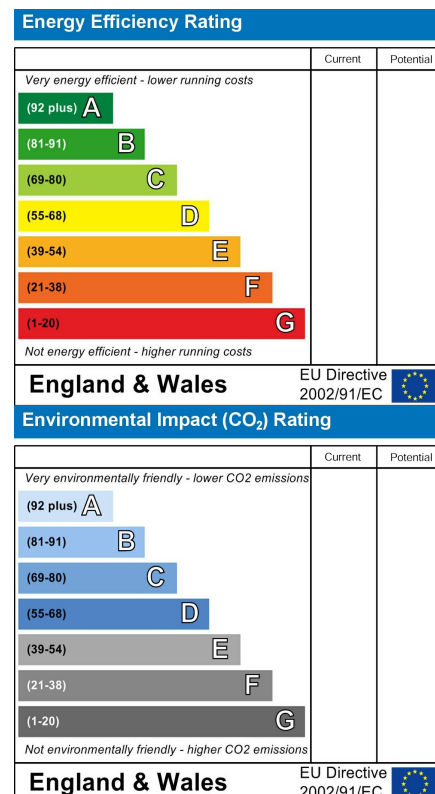
Area Map



Viewing

Please contact our House + Co Property (Sales) Office on 0117 907 0020 if you wish to arrange a viewing appointment for this property or require further information.

Energy Efficiency Graph



These particulars, whilst believed to be accurate are set out as a general outline only for guidance and do not constitute any part of an offer or contract. Intending purchasers should not rely on them as statements of representation of fact, but must satisfy themselves by inspection or otherwise as to their accuracy. No person in this firm's employment has the authority to make or give any representation or warranty in respect of the property.