

Flat 46, Manor Court Trendlewood Park

Fishponds, Bristol, BS16 1SY

Asking price £225,000



Flat 46, Manor Court Trendlewood Park



Description

Spacious and bright second floor apartment located in Fishponds with no onward chain! This lovely home is in fantastic condition and offers large living and dining space with patio doors to a great size balcony with stunning views. Just off the living room is a stylish and well planned kitchen with marble work tops and a full length window.

Along the hall are two good sized bedrooms and a modern bathroom with double shower. There's also great storage including a utility room and garage.

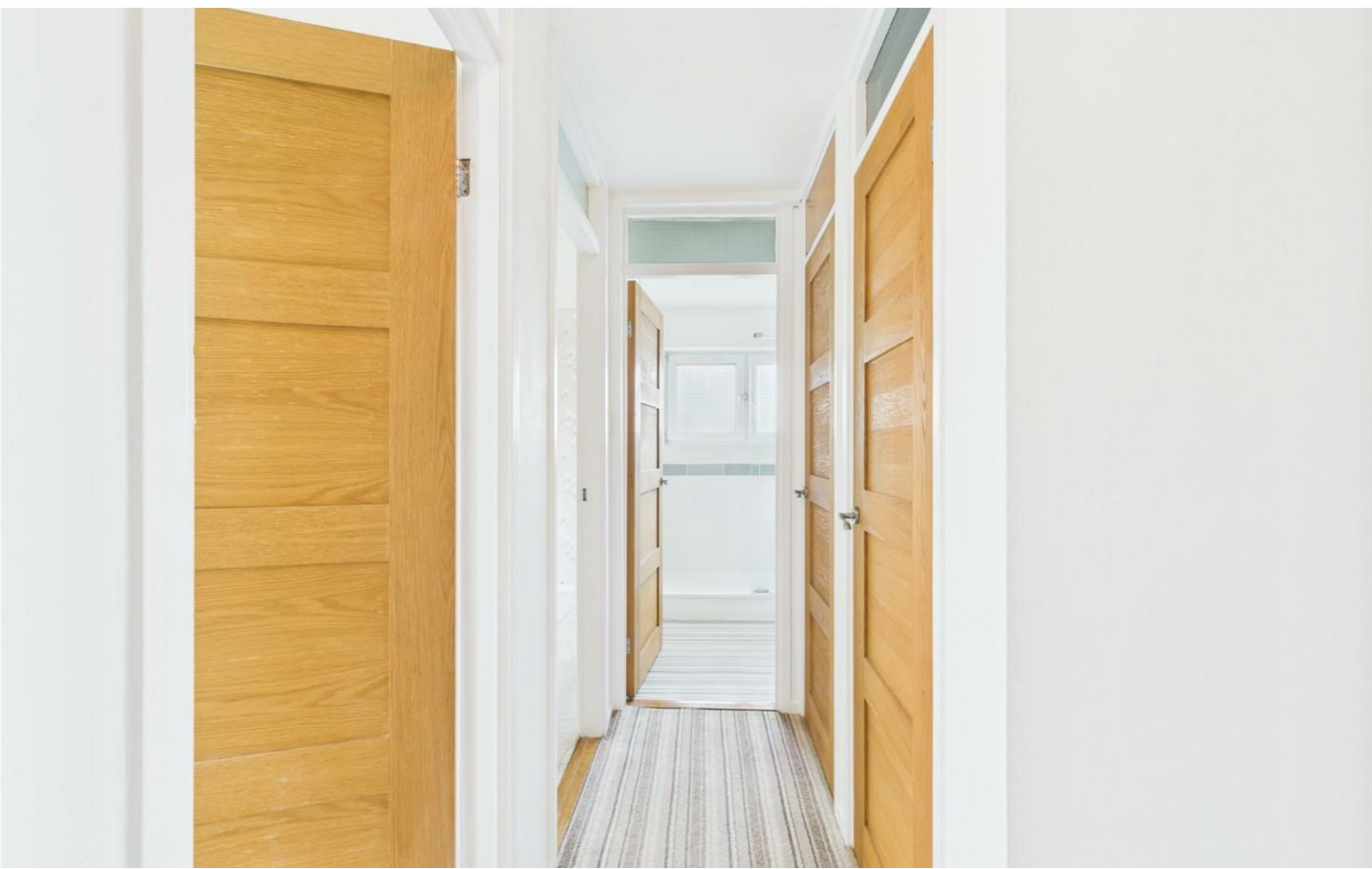
Manor Court, Trendlewood Park, is conveniently located near the Stoke Park Estate and Snuff Mills, which offer large open spaces and walks through the Frome Valley. Local transport links and motorways include the M32, M4, and M5; the Metro Bus Service; Parkway Train Station; and local cycle paths, as well as local shops and amenities.

Ready to move into this home will make a great first time buy or investment, please call to view!

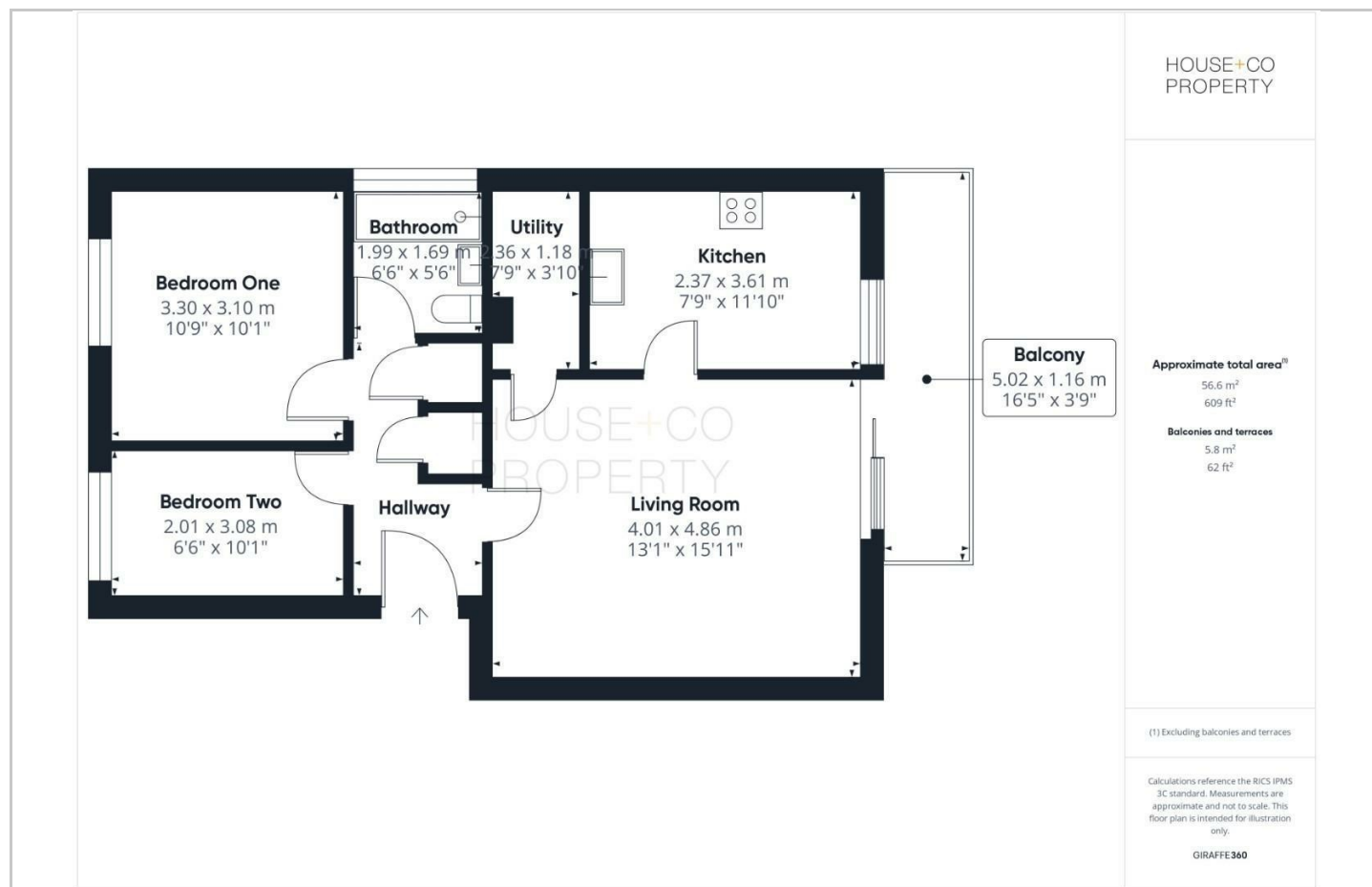
Leasehold 94 Years remaining. Ground Rent £10. Service charge £1213.08 pa.

- SECOND FLOOR APARTMENT
- GARAGE
- STYLISH KITCHEN
- SHOWER ROOM
- BALCONY
- LIVING ROOM
- TWO BEDROOMS
- NO CHAIN

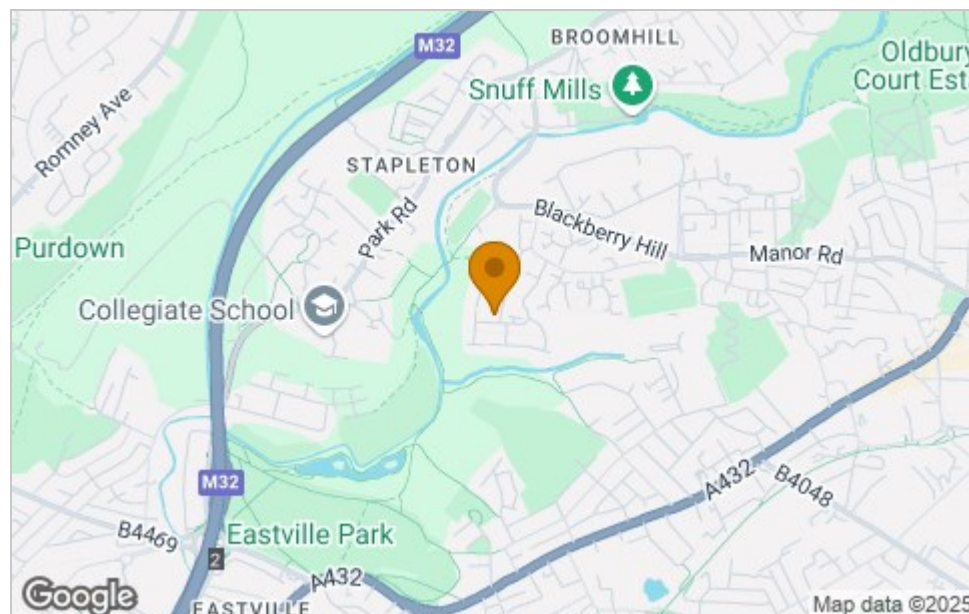




Floor Plan



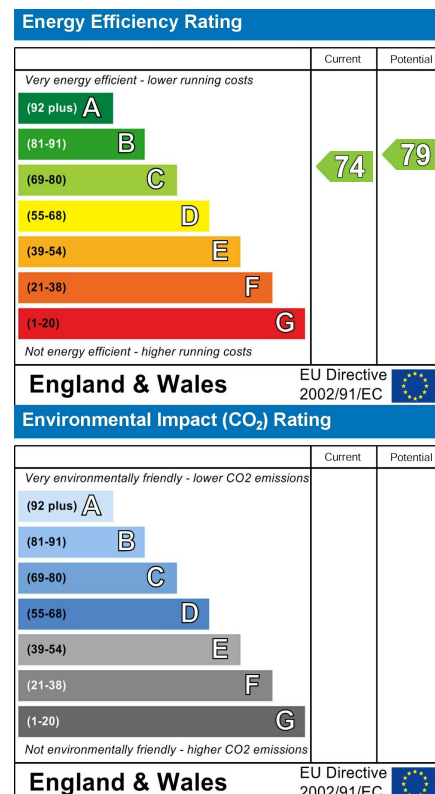
Area Map



Viewing

Please contact our House + Co Property (Sales) Office on 0117 907 0020 if you wish to arrange a viewing appointment for this property or require further information.

Energy Efficiency Graph



These particulars, whilst believed to be accurate are set out as a general outline only for guidance and do not constitute any part of an offer or contract. Intending purchasers should not rely on them as statements of representation of fact, but must satisfy themselves by inspection or otherwise as to their accuracy. No person in this firm's employment has the authority to make or give any representation or warranty in respect of the property.