



8 Gibbs Court, Victoria Avenue

Redfield, Bristol, BS5 9NW

Asking price £130,000



8 Gibbs Court, Victoria Avenue



Description

This 2nd floor studio flat with secure allocated parking is set a short stroll away from Church Road's increasingly popular shops, cafes and bars along with the greenery of St George's Park and Netham playing fields close by.

With a communal hallway leading to the flat's private entrance the property has a pleasant living area, open plan to the bedroom area with fitted double wardrobes. There is a separate kitchen and modern fitted bathroom with shower.

With Upvc double glazing, electric heating, an allocated secure parking space, pleasant southerly facing communal patio garden and much more these properties have traditionally been great for first time buyers and investors alike (a potential yield in the region of £850 pcm).

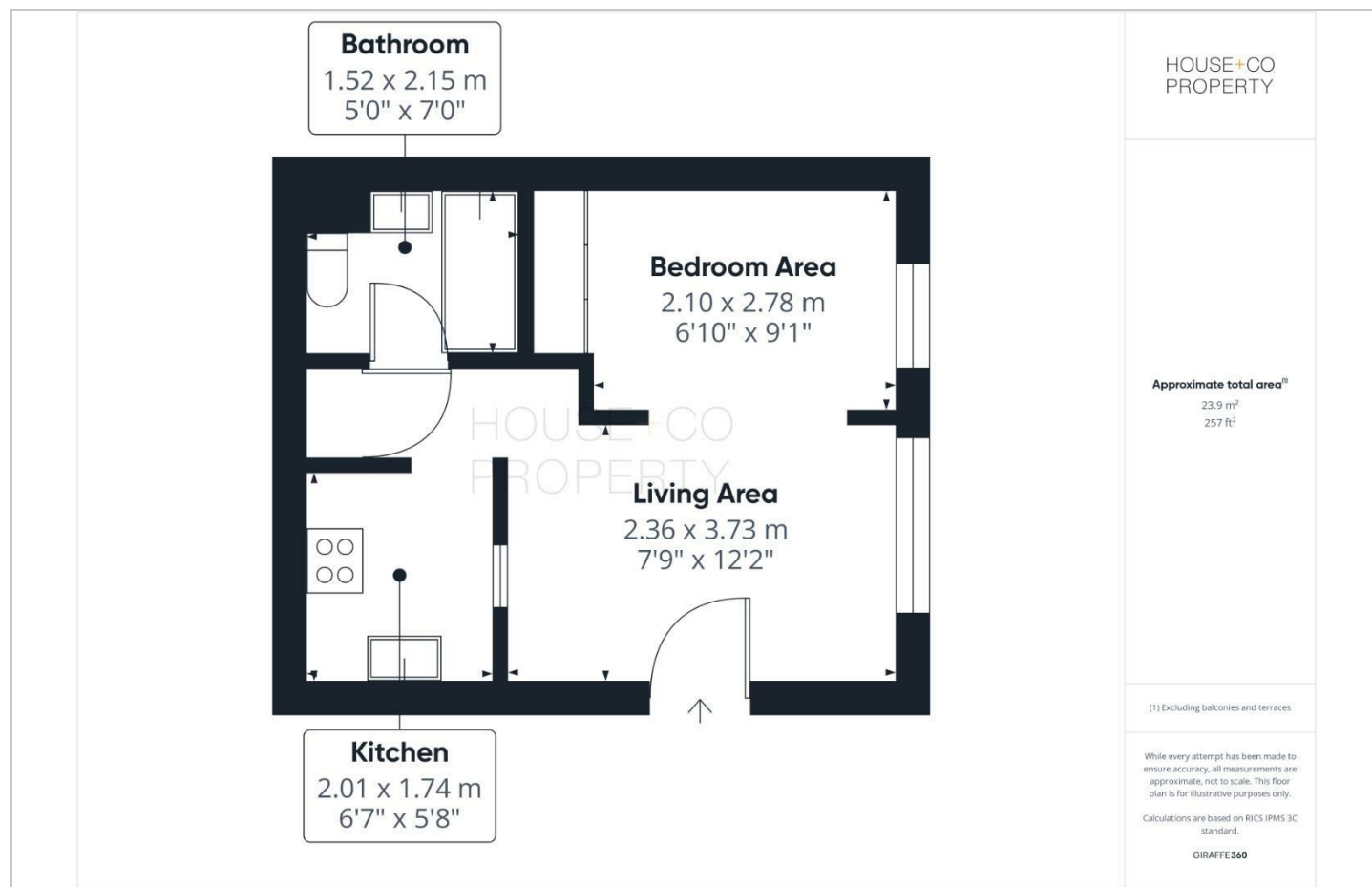
Set up on the remains of 999 year lease (960 years approx remaining) monthly

- TOP FLOOR STUDIO FLAT
- DOUBLE GLAZED
- MODERN BATHROOM WITH SHOWER
- 27 SQUARE METERS APROX
- GREAT FOR FIRST TIME BUYERS AND INVESTORS
- SECURE ALLOCATED PARKING
- ELECTRIC HEATING
- COMMUNAL SOUTHERLY FACING GARDENS
- ESTIMATED RENTAL YIELD OF £850 PCM
- NO CHAIN !

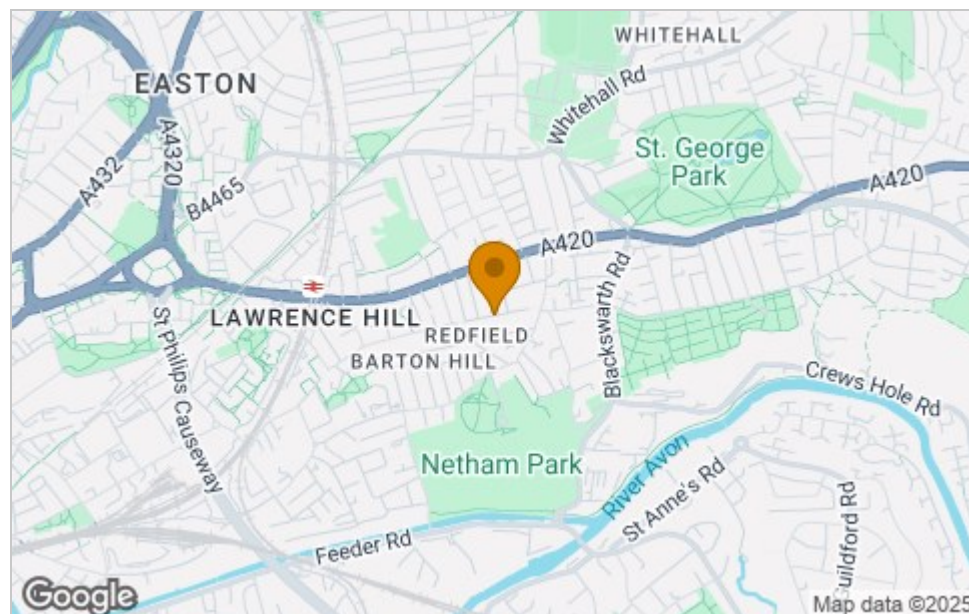




Floor Plan



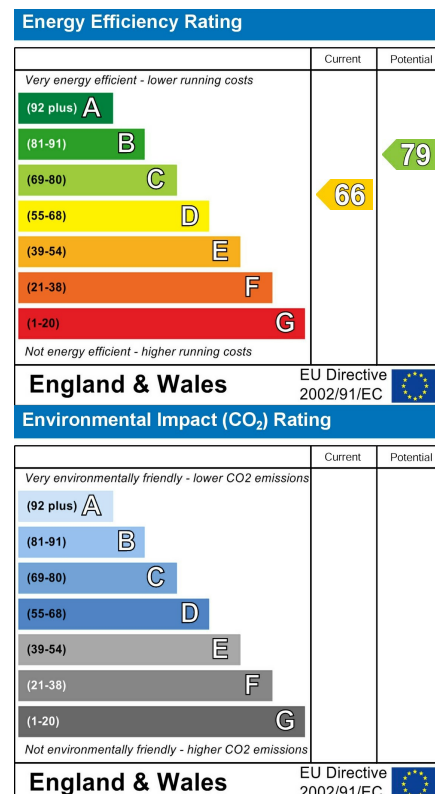
Area Map



Viewing

Please contact our House + Co Property (Sales) Office on 0117 907 0020 if you wish to arrange a viewing appointment for this property or require further information.

Energy Efficiency Graph



These particulars, whilst believed to be accurate are set out as a general outline only for guidance and do not constitute any part of an offer or contract. Intending purchasers should not rely on them as statements of representation of fact, but must satisfy themselves by inspection or otherwise as to their accuracy. No person in this firm's employment has the authority to make or give any representation or warranty in respect of the property.