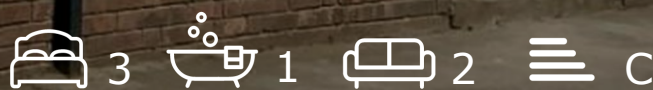




1 Baden Road

Redfield, Bristol, BS5 9QE

**Asking price £380,000**



# 1 Baden Road



## Description

This tastefully refurbished period end of terrace house presents an exceptional opportunity for those seeking a blend of modern comfort and classic character. The property boasts off-street parking and solar panels.

As you enter, a spacious entrance hall leads to two separate reception rooms, a modern fitted kitchen, bathroom with a utility area. On the first floor, you will find three generous bedrooms, each room is filled with natural light, creating a warm and inviting atmosphere.

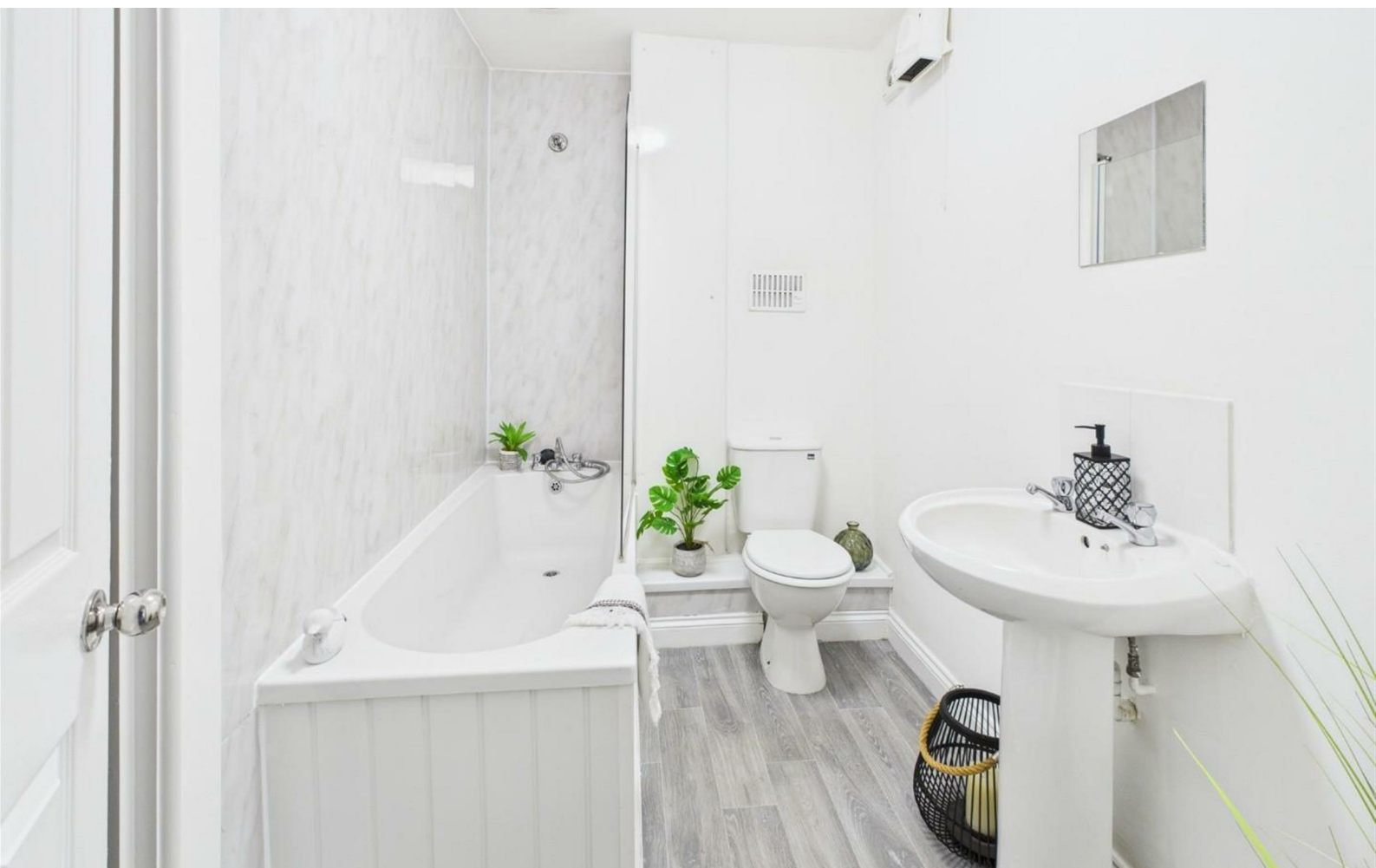
The property is ideally situated just a short stroll from Netham Park, Church Road is nearby, featuring a vibrant selection of cafes, bars, and eateries, ensuring that you are never far from local amenities and social opportunities.

This delightful home combines period charm with contemporary living, making it an ideal choice for families or professionals looking to settle in a thriving community. Do not miss the chance to make this wonderful property your own.

- REFURBISH PERIOD PROPERTY
- SEPARATE RECEPTIONS
- ENCLOSED GARDEN
- CLOSE TO NETHAM PARK & CHURCH ROAD
- HMO LICENCE
- 3 BEDROOMS
- MODERN KITCHEN AND BATHROOM
- OFF STREET PARKING
- NEW ROOF WITH SOLAR PANELS
- NO ONWARD CHAIN WORRIES



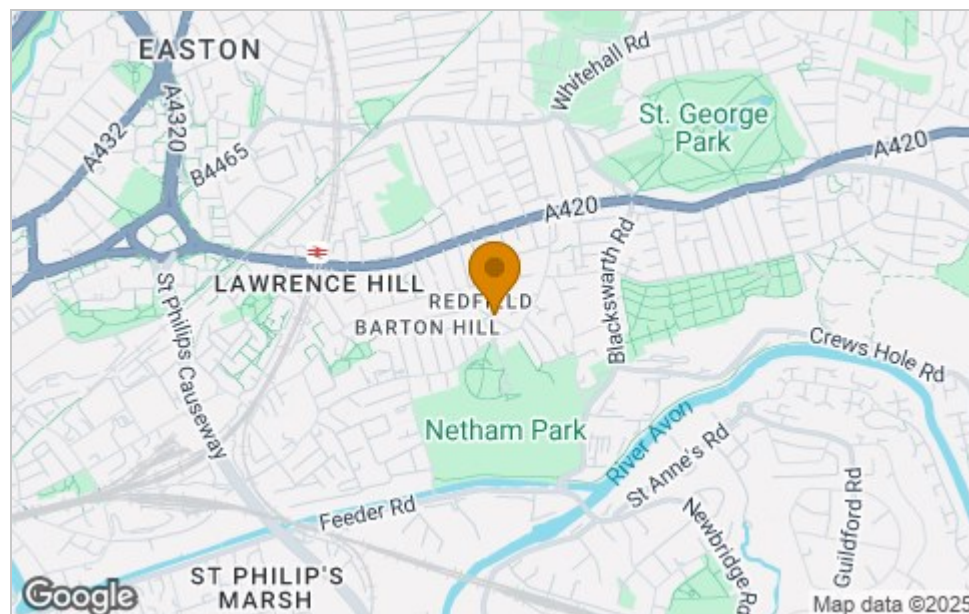




## Floor Plan



## Area Map



## Viewing

Please contact our House + Co Property (Sales) Office on 0117 907 0020 if you wish to arrange a viewing appointment for this property or require further information.

These particulars, whilst believed to be accurate are set out as a general outline only for guidance and do not constitute any part of an offer or contract. Intending purchasers should not rely on them as statements of representation of fact, but must satisfy themselves by inspection or otherwise as to their accuracy. No person in this firm's employment has the authority to make or give any representation or warranty in respect of the property.

## Energy Efficiency Graph

