



20 Bull Lane
, Bristol, BS5 8AB

Asking price £205,000



20 Bull Lane



Description

Welcome to this bright and spacious 2 bed apartment situated in Crews Hole and close to Troopers Hill & Conham Nature Reserve. Boasting lovely views, this property is ideal for first time buyers and investors alike.

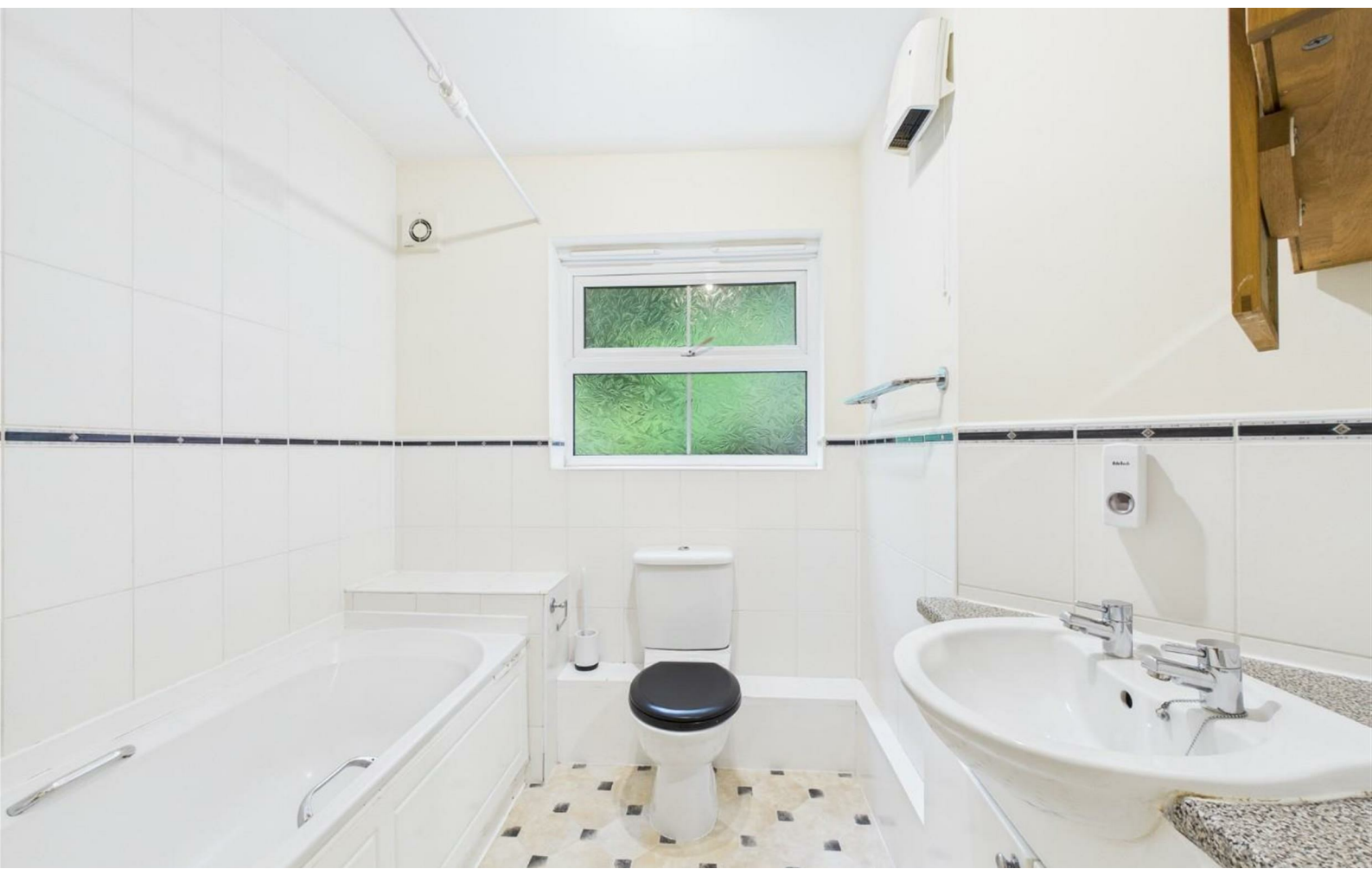
As you enter, you are greeted by a spacious open plan kitchen / living area featuring a Juliet balcony. The property offers two double bedrooms, one with fitted wardrobes, and a family bathroom.

Further benefits include an allocated parking space, double glazing, electric heating and no onward chain! Call now to book a viewing !!

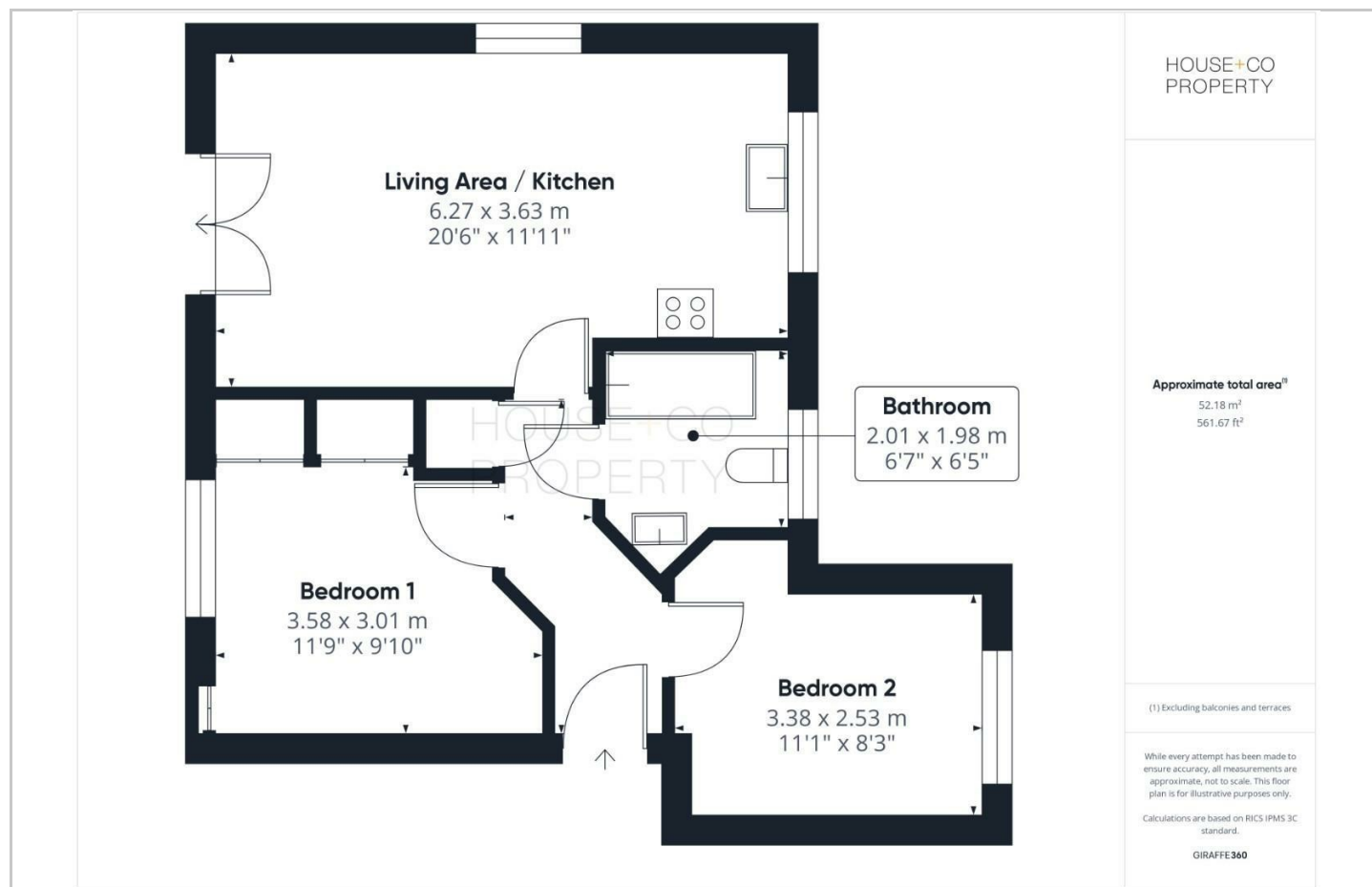
(Set up on the remains of a 999 year lease with a monthly management fee in the region of £175 and an annual ground rent of £50)

- ALLOCATED PARKING SPACE
- 2 DOUBLE BEDROOMS
- CLOSE TO TROOPERS HILL & CONHAM NATURE RESERVE
- RIVERSIDE WALKS NEARBY
- DOUBLE GLAZING
- JULIET BALCONY WITH VIEWS
- SPACIOUS OPEN PLAN KITCHEN / LIVING AREA
- NO CHAIN !!
- MODERN BATHROOM
- ELECTRIC HEATING

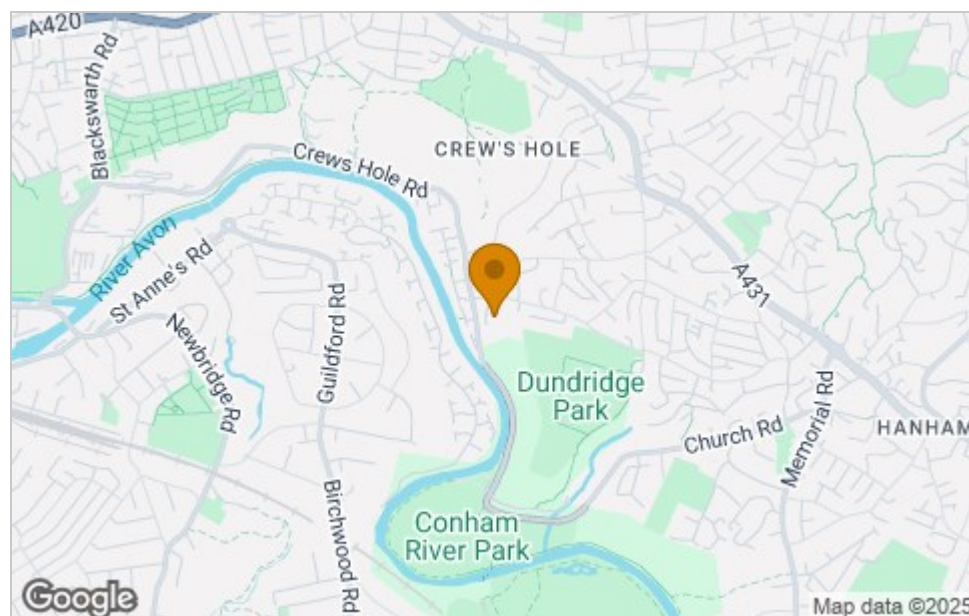




Floor Plan



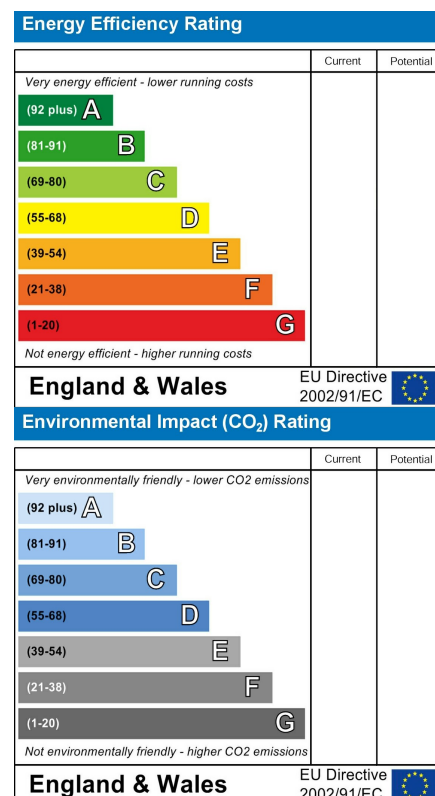
Area Map



Viewing

Please contact our House + Co Property (Sales) Office on 0117 907 0020 if you wish to arrange a viewing appointment for this property or require further information.

Energy Efficiency Graph



These particulars, whilst believed to be accurate are set out as a general outline only for guidance and do not constitute any part of an offer or contract. Intending purchasers should not rely on them as statements of representation of fact, but must satisfy themselves by inspection or otherwise as to their accuracy. No person in this firm's employment has the authority to make or give any representation or warranty in respect of the property.