



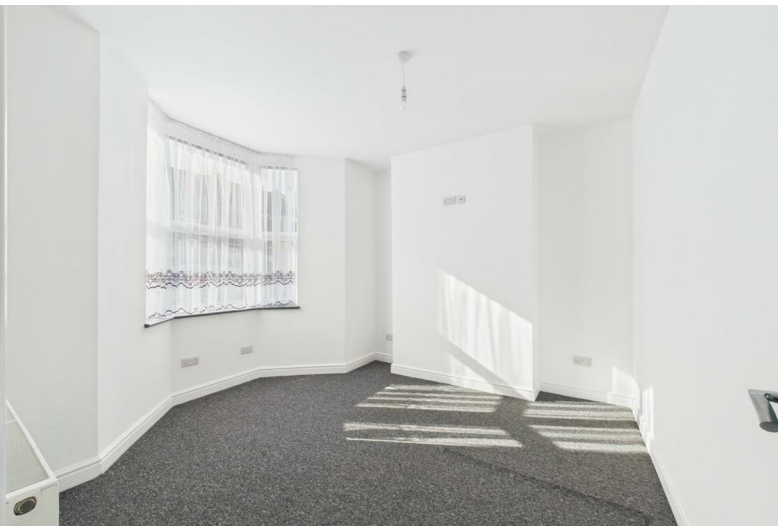
63 Vicarage Road  
Whitehall, Bristol, BS5 9AQ

**Asking price £400,000**





# 63 Vicarage Road



## Description

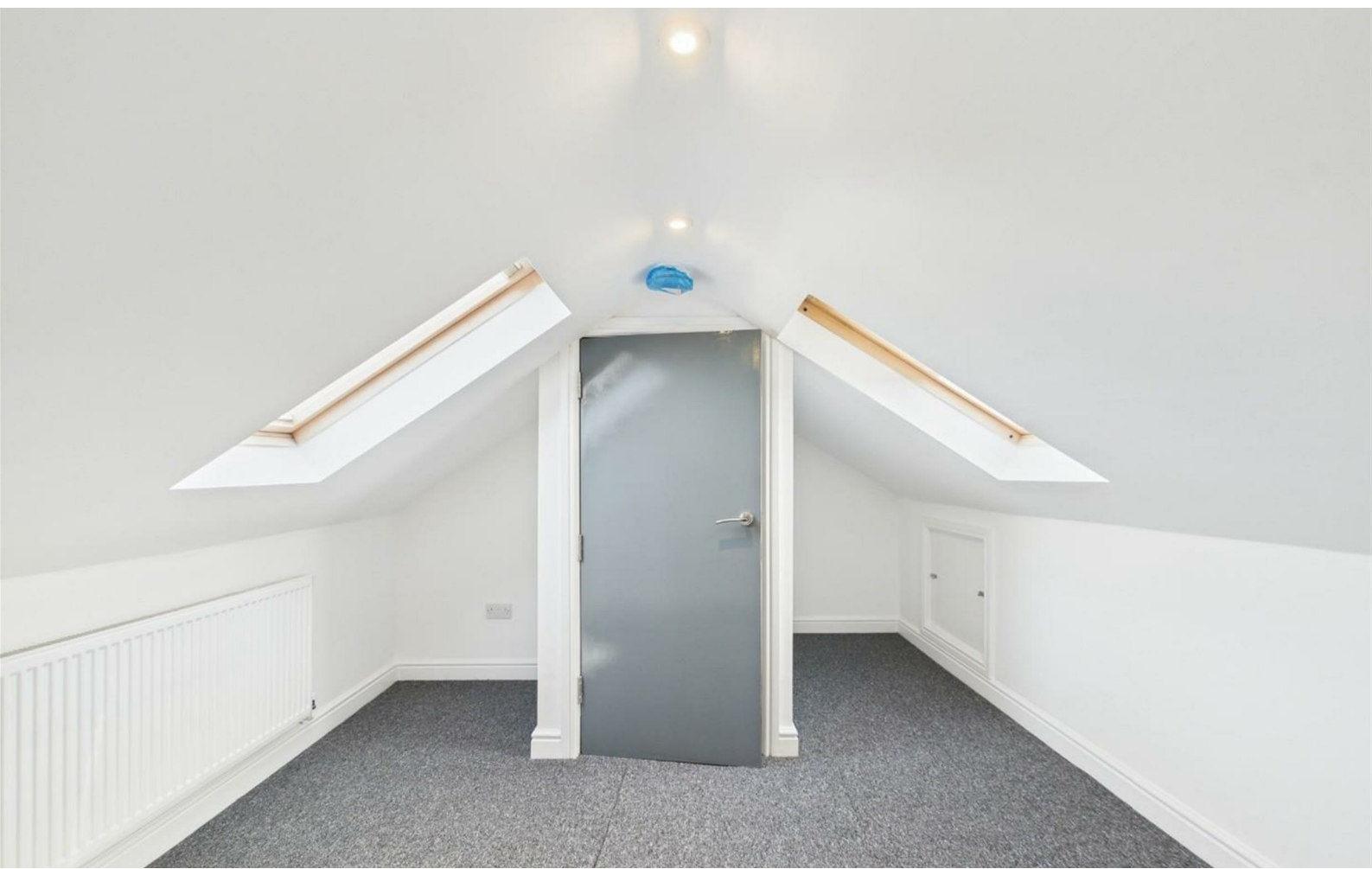
Situated on the Easton / Whitehall borders is this recently refurbished 4 bedroom house arranged over 3 floors giving a great opportunity for a buyer looking for a property to just move into.

Comprising inner hallway, bay lounge, separate dining room, a shower room and a modern fitted kitchen / breakfast room (16' approx) looking onto the enclosed rear garden to the ground floor. To the first floor are 3 bedrooms and a modern walk in shower room with stairs to the 4th bedroom / loft room above.

With the benefits of refurbishment, including new kitchen, shower rooms, replastering, re-wiring, central heating system from a combination boiler, double glazing, solar panels and NO CHAIN, this a great house that suits first time buyers, a young family and or investors alike.

CHECK OUT THE VIRTUAL TOUR and book in to view all on offer.!

- ARRANGED OVER 3 FLOORS
- RENOVATED THROUGH OUT OVER RECENT YEARS
- NO CHAIN !
- DOUBLE GLAZED AND GAS CENTRAL HEATING
- SITUATED ON WHITEHALL / EASTON BORDERS
- 4 BEDROOMS
- NEWLY FITTED MODERN STYLISH KITCHEN/BREAKFAST ROOM
- 2 SHOWER ROOMS
- ENCLOSED REAR GARDEN
- CLOSE TO BRISTOL TO BATH CYCLE PATH



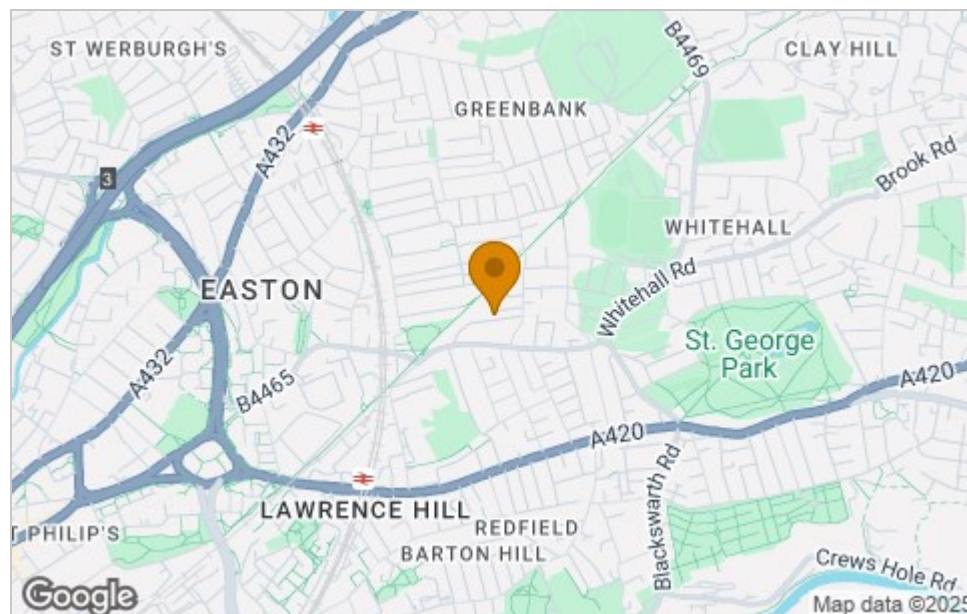




## Floor Plan



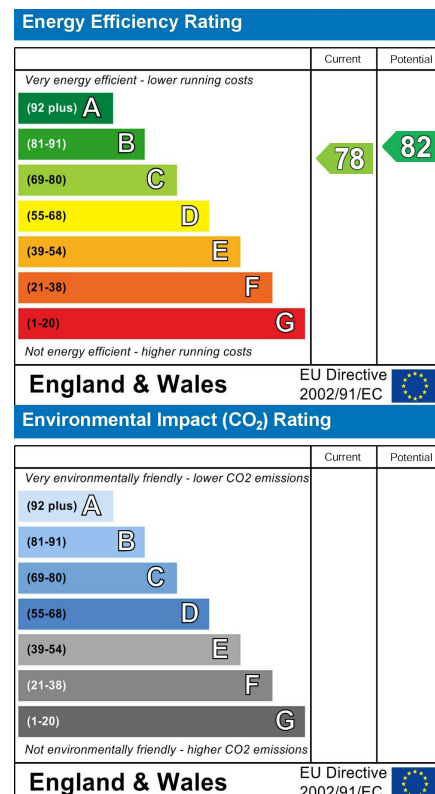
## Area Map



## Viewing

Please contact our House + Co Property (Sales) Office on 0117 907 0020 if you wish to arrange a viewing appointment for this property or require further information.

## Energy Efficiency Graph



These particulars, whilst believed to be accurate are set out as a general outline only for guidance and do not constitute any part of an offer or contract. Intending purchasers should not rely on them as statements of representation of fact, but must satisfy themselves by inspection or otherwise as to their accuracy. No person in this firm's employment has the authority to make or give any representation or warranty in respect of the property.