

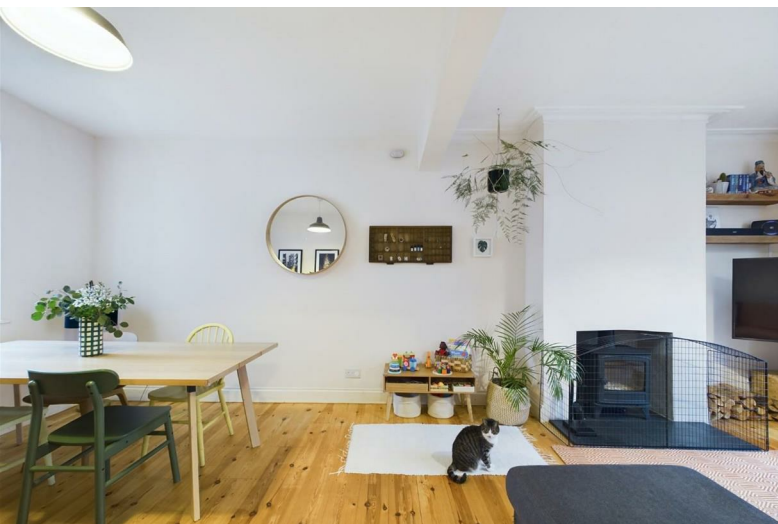


64 Roseberry Park
Redfield, Bristol, BS5 9ES

Asking price £375,000



64 Roseberry Park



Description

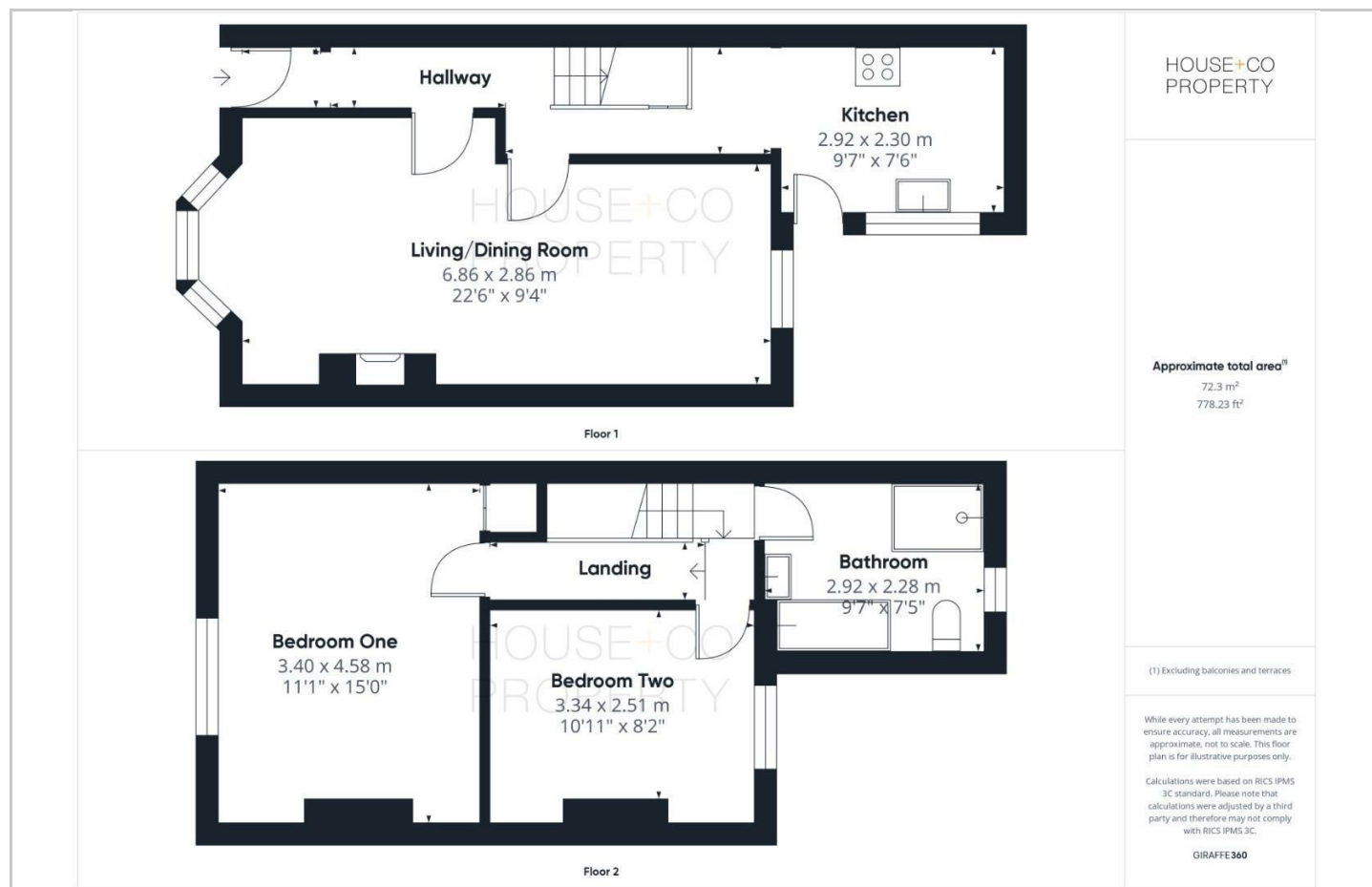
Beautifully presented Victorian terrace located on the popular Roseberry Park which is between Church Rd and St George's Park. With everything a first time buyer would love in a home this one has bay lounge which is open plan to the dining space. There's a lovely kitchen with wood work tops and a Belfast sink. Upstairs are two double bedrooms and a stunning bathroom with separate shower and bath. Outside you'll find a west facing garden with mature plants and shrub borders and a patio seating area perfect for when the sun arrives in summer. In lovely condition throughout and within walking distance of local eateries including The Lock Up, Crafty Egg & The Loaf and excellent links into the city. Please call to view this fantastic home!

- VICTORIAN TERRACE
- CLOSE TO ST GEORGE'S PARK
- OPEN PLAN LIVING
- UPSTAIRS BATHROOM
- JUST OFF CHURCH ROAD
- TWO BEDROOMS
- MODERN KITCHEN
- WEST FACING GARDEN

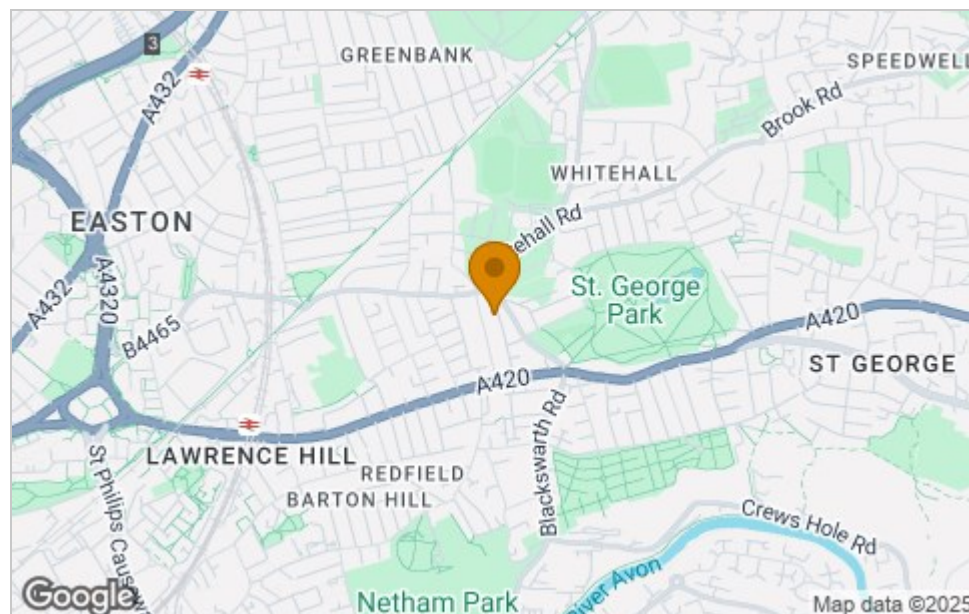




Floor Plan



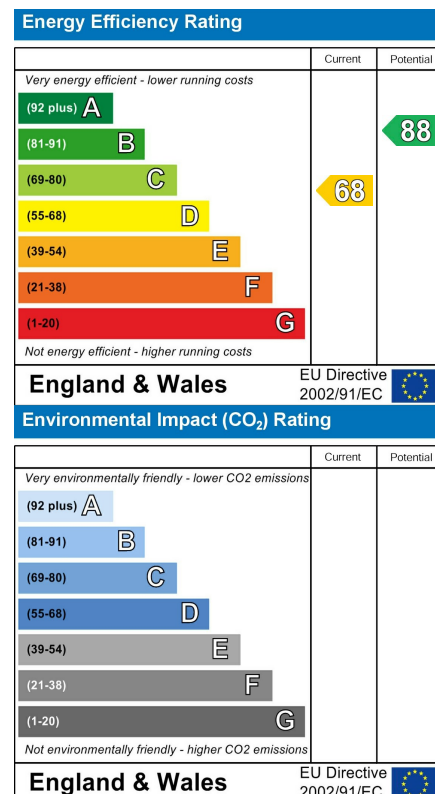
Area Map



Viewing

Please contact our House + Co Property (Sales) Office on 0117 907 0020 if you wish to arrange a viewing appointment for this property or require further information.

Energy Efficiency Graph



These particulars, whilst believed to be accurate are set out as a general outline only for guidance and do not constitute any part of an offer or contract. Intending purchasers should not rely on them as statements of representation of fact, but must satisfy themselves by inspection or otherwise as to their accuracy. No person in this firm's employment has the authority to make or give any representation or warranty in respect of the property.