



22 Vicarage Road
Redfield, Bristol, BS5 9AG

Asking price £400,000



22 Vicarage Road



Description

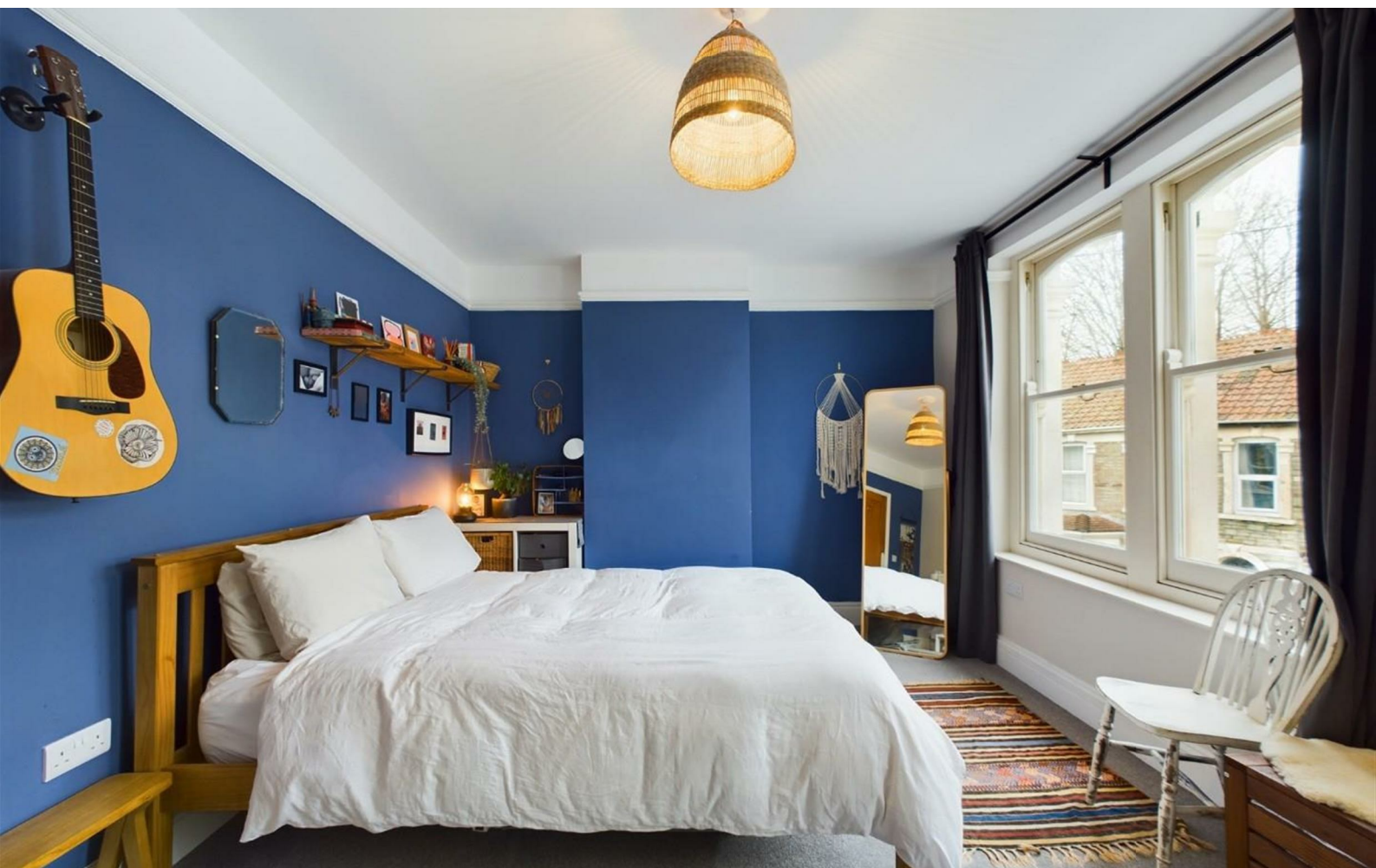
Welcome to this well-presented 2 bedroom period home nestled away in Redfield. This charming property is next to a cycle path and within reach is the picturesque St. George Park, providing an excellent opportunity for leisurely walks, picnics, or simply enjoying the outdoors. Church Road, within walking distance, offers a selection of cafes, pubs and transport links into the city.

As you enter, you are greeted by a spacious dining room featuring a wood burner stove. The bay lounge, full of character, offers lovely period features such as the original fireplace and ceiling rose. To the rear, you'll find a light and airy modern kitchen. The south-facing garden offers rear access, patio space for table and chairs and an apple tree to the left. Upstairs you'll find two well-proportioned bedrooms and a lovely modern bathroom.

Further benefits include double glazing, gas central heating from a combination boiler and much more! Don't miss out on making this gem your own! Call now to book a viewing !!

- NEXT TO CYCLE PATH
- SPACIOUS DINING ROOM WITH LOG BURNER
- SOUTH-FACING GARDEN
- MODERN KITCHEN
- DOUBLE GLAZING
- BAY LOUNGE WITH PERIOD FEATURES
- ST. GEORGE PARK WITHIN REACH
- 2 DOUBLE BEDROOMS
- MODERN BATHROOM

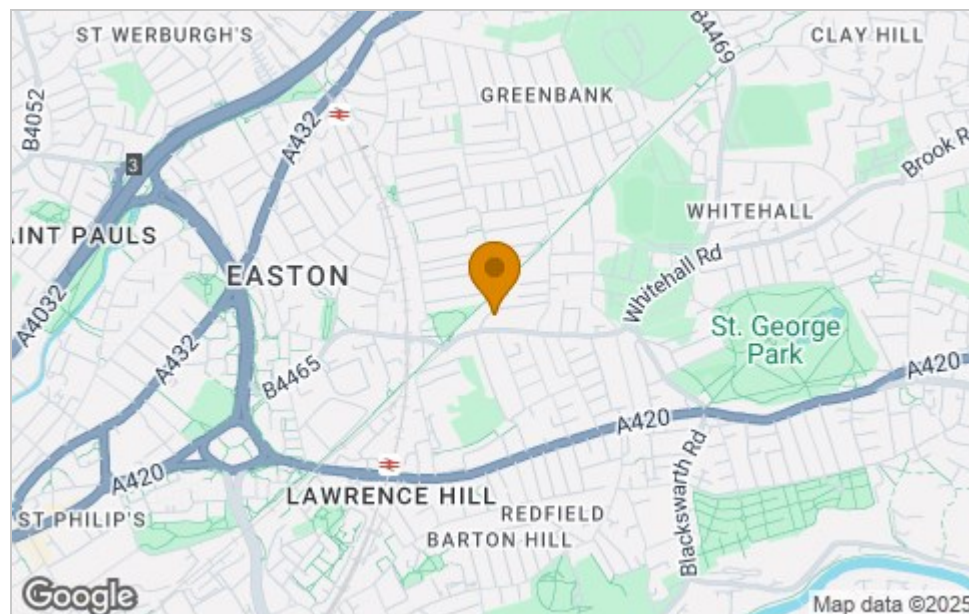




Floor Plan



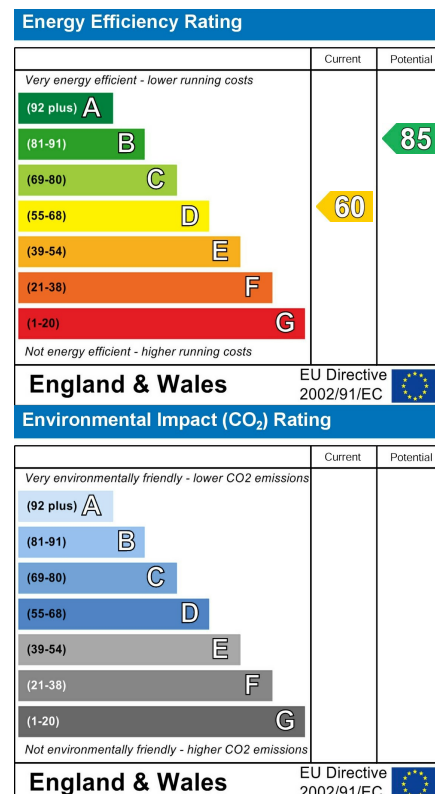
Area Map



Viewing

Please contact our House + Co Property (Sales) Office on 0117 907 0020 if you wish to arrange a viewing appointment for this property or require further information.

Energy Efficiency Graph



These particulars, whilst believed to be accurate are set out as a general outline only for guidance and do not constitute any part of an offer or contract. Intending purchasers should not rely on them as statements of representation of fact, but must satisfy themselves by inspection or otherwise as to their accuracy. No person in this firm's employment has the authority to make or give any representation or warranty in respect of the property.