



12 Lapwing Gardens

Stapleton, Bristol, BS16 1UB

Asking price £335,000



12 Lapwing Gardens



Description

Well presented 1970's terrace located in a popular location in Stapleton within easy reach of lovely walks in Snuff Mills, Stoke Park and Frenchay Common. Tucked away in a cul-de-sac this lovely home has benefitted from updating by it's current owners to create a modern and spacious home.

Comprising a large entrance hall with storage, open plan living/dining space, a great size fitted kitchen and sunroom to the ground floor.

Upstairs has two double bedrooms and a further study/nursery room along with a stylish bathroom.

There has been lots of stylish additions including panelled walls meaning you can move in without the hassle of carrying out renovations.

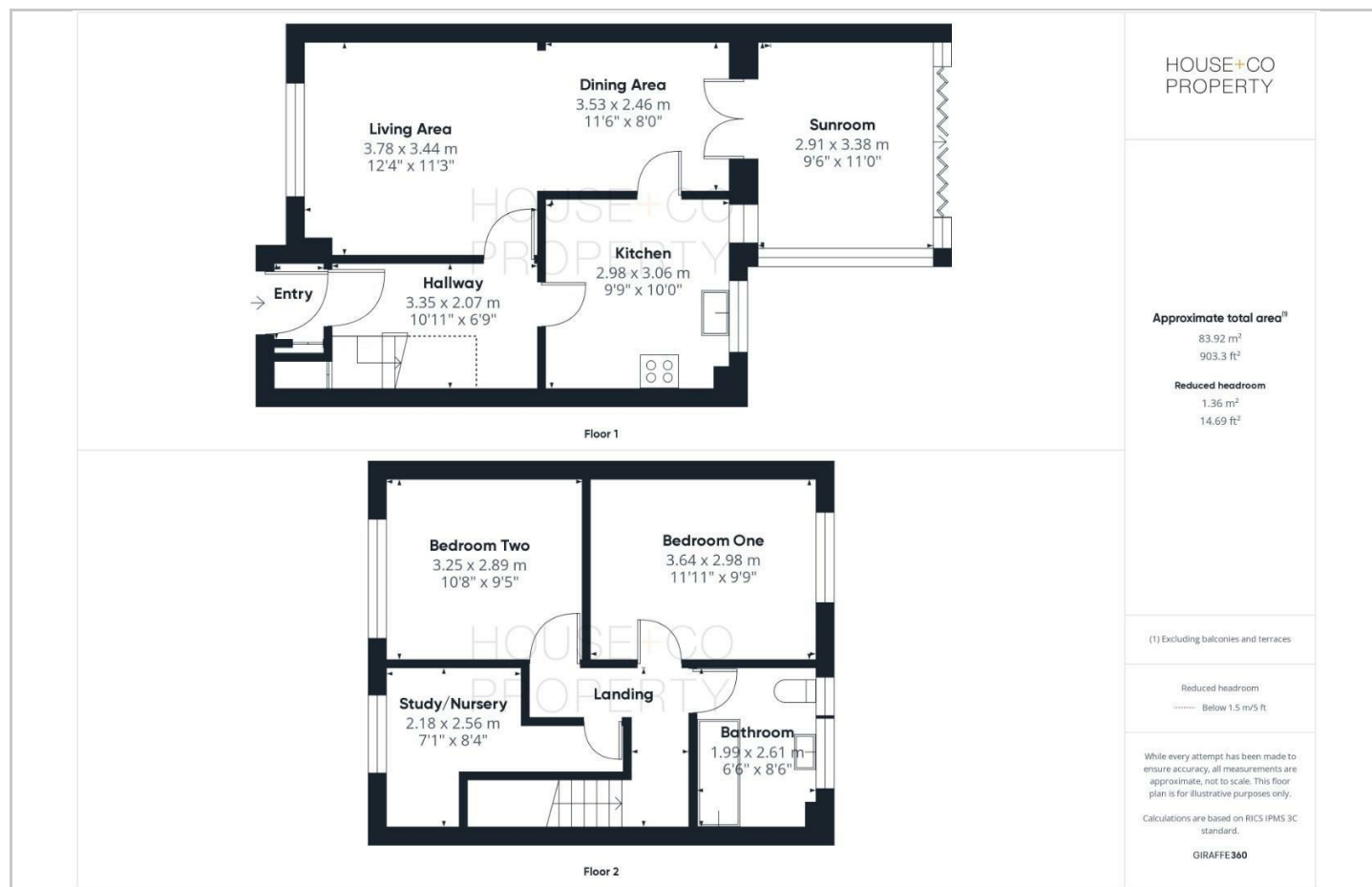
Outside to the rear is a low maintenance garden with shed and rear access. To the front is a garden with lawn and mature shrubs and trees.

This lovely home is a 10 minute walk from the metro bus (1 stop into city centre), close to the M32 / M4 motorway links and also an easy commute to Abbeywood MOD, Parkway Train station, Airbus and UWE. Please call to view!

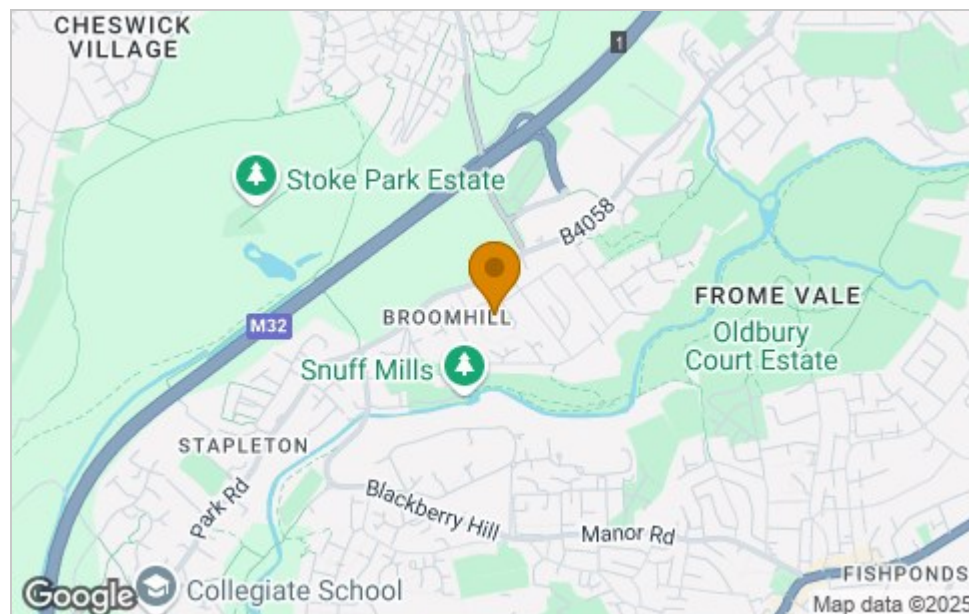




Floor Plan



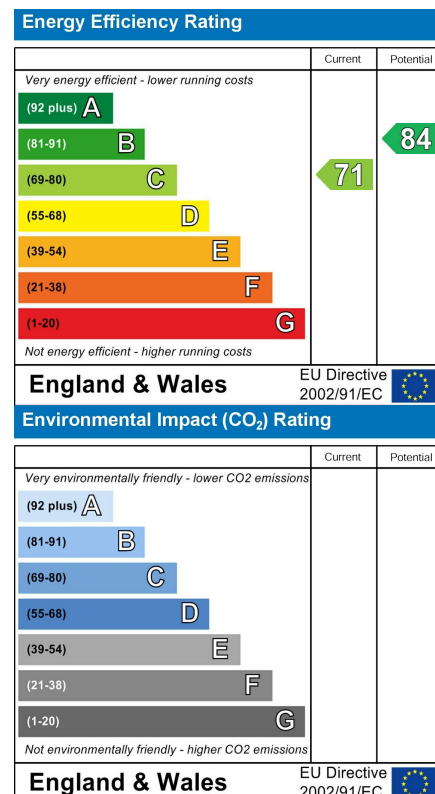
Area Map



Viewing

Please contact our House + Co Property (Sales) Office on 0117 907 0020 if you wish to arrange a viewing appointment for this property or require further information.

Energy Efficiency Graph



These particulars, whilst believed to be accurate are set out as a general outline only for guidance and do not constitute any part of an offer or contract. Intending purchasers should not rely on them as statements of representation of fact, but must satisfy themselves by inspection or otherwise as to their accuracy. No person in this firm's employment has the authority to make or give any representation or warranty in respect of the property.