



10 Elstree Road  
Whitehall, Bristol, BS5 7DX

**Asking price £450,000**





# 10 Elstree Road



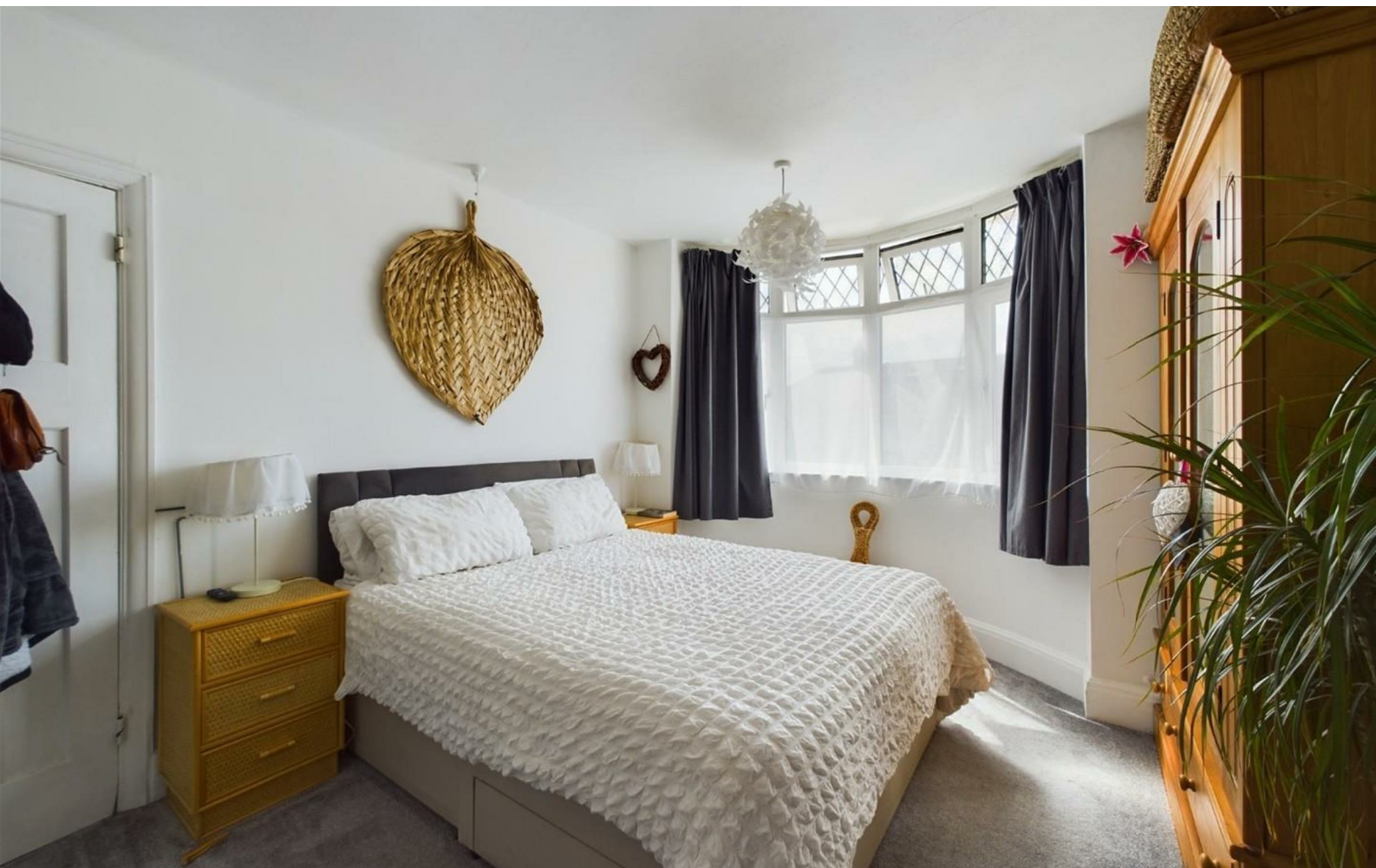
## Description

Well presented 1930's End terrace situated in a cul-de-sac location in Whitehall close to local Primary & Secondary schools. Rare to the market this fantastic home has much to offer and comprises of entrance hall with original door and stained glass windows. There's a bay lounge with a wood burning stove and open plan to the dining room. The kitchen is lovely and bright and leads out to the garden. Upstairs are two double bedrooms and a single along with a modern family bathroom. Outside to the rear is a stunning garden with paved patio area, lawn and mature flower borders. Towards the rear of the garden you'll find fruit trees and a vegetable patch and a decked terrace perfect for this summer parties. There is also side access and a block paved driveway for two cars. Further benefits include original features, gas central heating and double glazing. A lovely home in a great spot within easy reach of the cycle path, routes to the city and the vibrant Church rd in Redfield!

- 1930'S END TERRACE
- THREE BEDROOMS
- MODERN KITCHEN
- OFF STREET PARKING
- CUL-DE-SAC LOCATION
- OPEN PLAN LIVING DINING
- STUNNING GARDEN
- WOOD BURNING STOVE





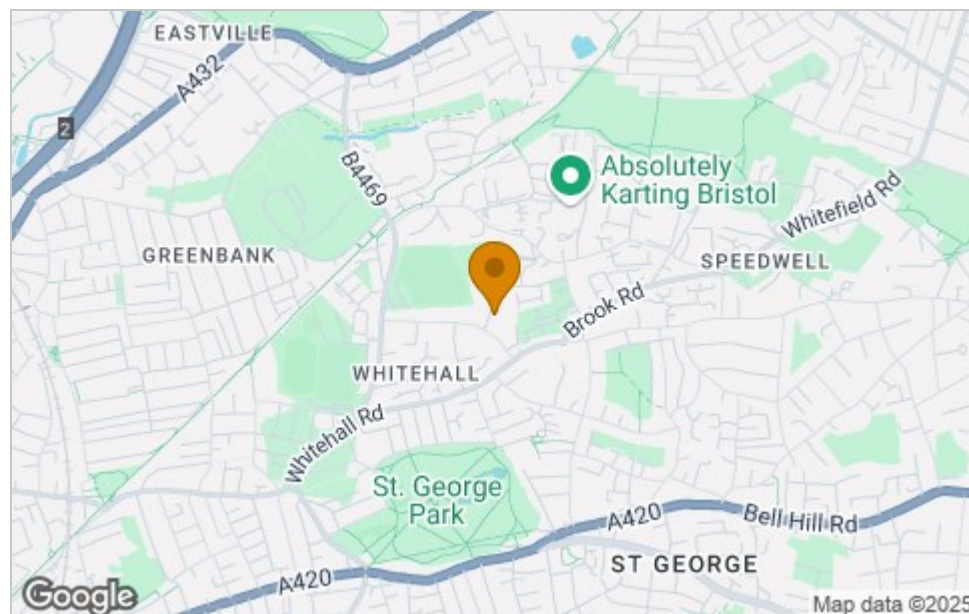




## Floor Plan



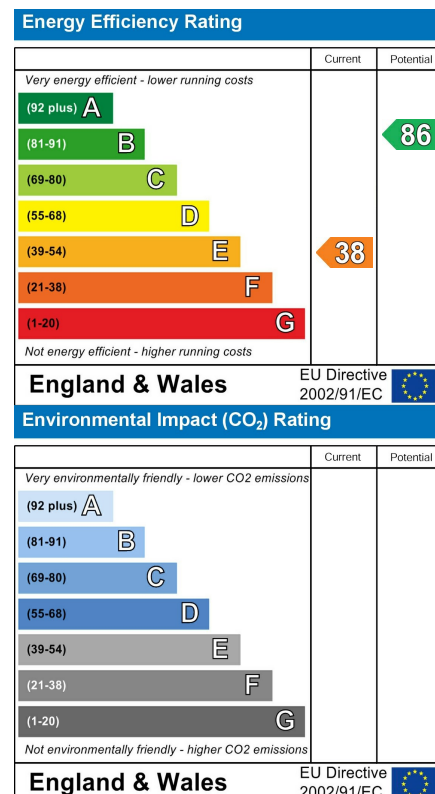
## Area Map



## Viewing

Please contact our House + Co Property (Sales) Office on 0117 907 0020 if you wish to arrange a viewing appointment for this property or require further information.

## Energy Efficiency Graph



These particulars, whilst believed to be accurate are set out as a general outline only for guidance and do not constitute any part of an offer or contract. Intending purchasers should not rely on them as statements of representation of fact, but must satisfy themselves by inspection or otherwise as to their accuracy. No person in this firm's employment has the authority to make or give any representation or warranty in respect of the property.