



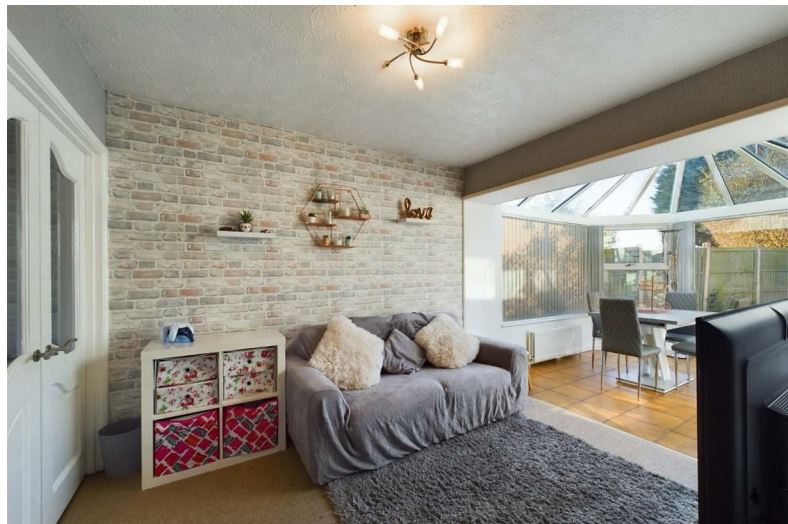
1 Selworthy

Kingswood, Bristol, BS15 9RJ

Asking price £460,000



1 Selworthy



Description

Well presented four bedroom link-detached family home situated in a popular location close to Courtney Primary School. This lovely home offers fantastic living space ideal for growing families. Offering a great size lounge with interconnecting doors into a snug and dining/sunroom. The modern fitted kitchen has access to the garage/utility space. There's a w.c/cloakroom in the hallway.

Upstairs you'll find three double bedrooms and a single along with a family size modern bathroom. Outside to the front is a paved driveway providing ample parking and mature shrubs and small trees. The rear garden is a lovely landscaped space with paved patio seating area, artificial low maintenance grass, workshop and side access.

A fantastic home in a great location! Please call to view!

- MODERN LINK-DETACHED HOME
- LIVING ROOM
- KITCHEN
- DRIVEWAY
- FOUR BEDROOMS
- DINING/SUNROOM
- GARAGE/UTILITY
- GARDENS AND WORKSHOP

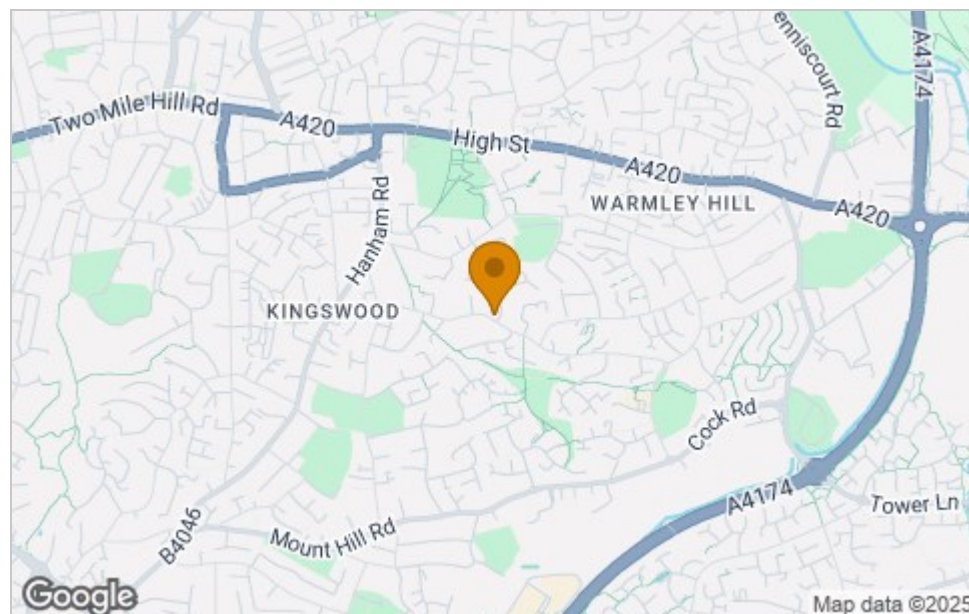




Floor Plan



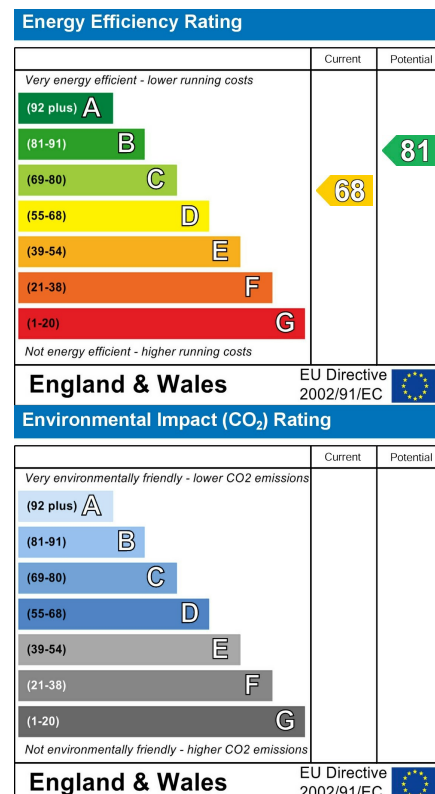
Area Map



Viewing

Please contact our House + Co Property (Sales) Office on 0117 907 0020 if you wish to arrange a viewing appointment for this property or require further information.

Energy Efficiency Graph



These particulars, whilst believed to be accurate are set out as a general outline only for guidance and do not constitute any part of an offer or contract. Intending purchasers should not rely on them as statements of representation of fact, but must satisfy themselves by inspection or otherwise as to their accuracy. No person in this firm's employment has the authority to make or give any representation or warranty in respect of the property.