





513 Stapleton Road

Eastville, Bristol, BS5 6PE

Asking price £325,000

 2  2  2  D

513 Stapleton Road



Description

Period living conveniently located near the picturesque Eastville Park, you can enjoy leisurely strolls or picnics in the great outdoors. Additionally, the vibrant cafes, delis, and independent shops in the vicinity add a touch of local charm to the neighbourhood.

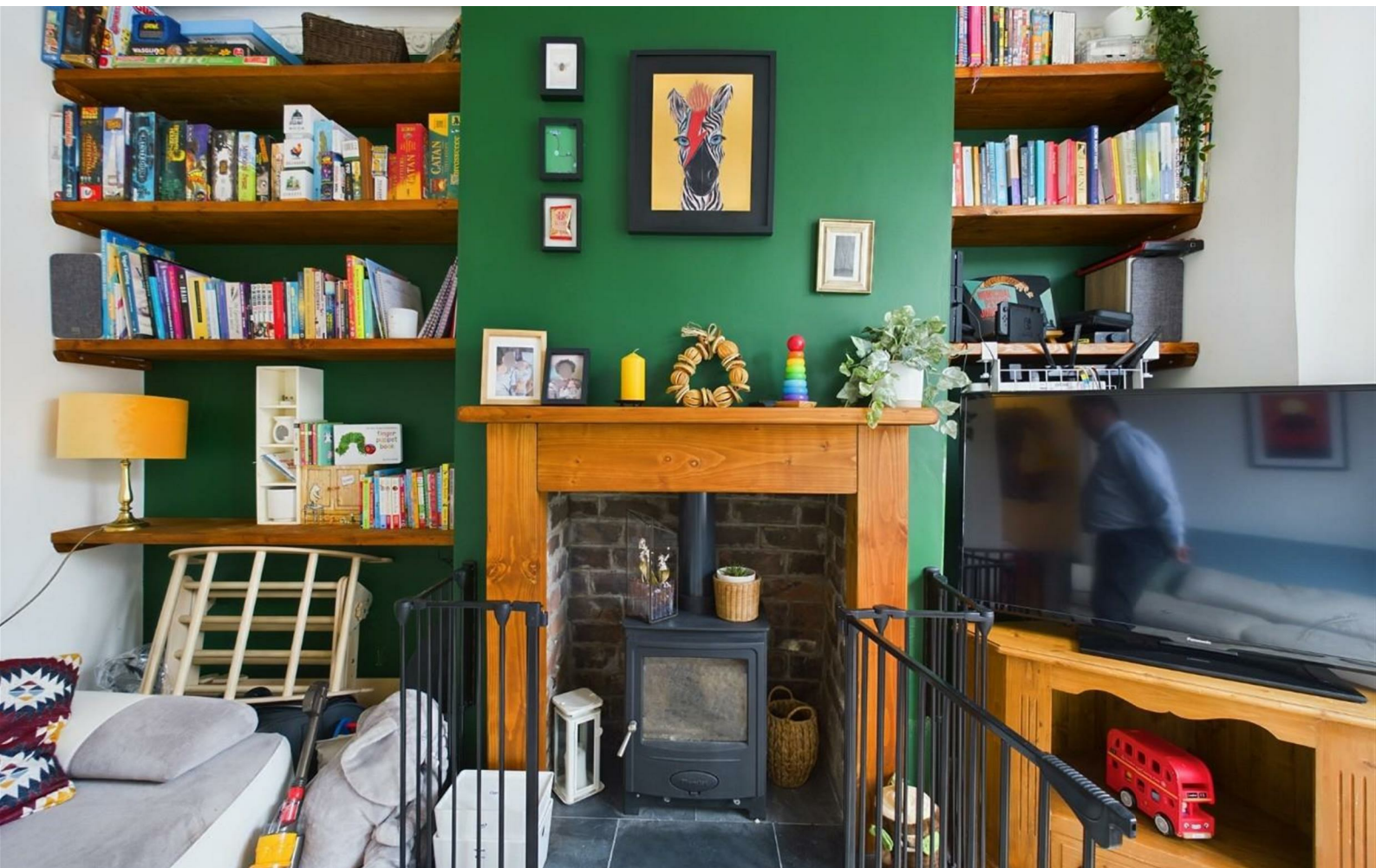
For those who enjoy a spot of retail therapy, Cabot Circus is just a 30-minute walk away, offering a plethora of shopping and dining options to explore at your leisure.

In brief, the well presented accommodation comprises entrance vestibule and hallway, a bayed lounge completed with a woodburner, a separate dining room and a modern fitted kitchen. With two double bedrooms and a spacious bathroom to the first floor. Whilst outside provides an enclosed rear garden.

Value for your money, come and have a viewing!

- WELL PRESENTED PERIOD TERRACE
- SEPARATE RECEPTION ROOMS
- LARGE BATHROOM
- VIBRANT SHOPS - CAFES & DELIS CLOSE BY
- TWO DOUBLE BEDROOMS
- MODERN FITTED KITCHEN
- A STROLL TO EASTVILLE PARK
- 30 MINUTE WALK TO CABOT CIRCUS

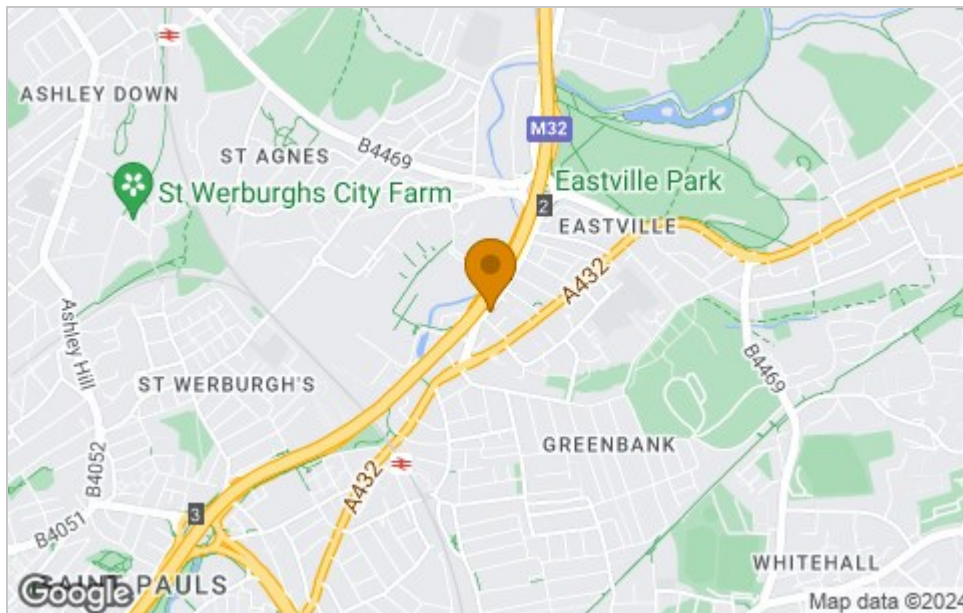




Floor Plan



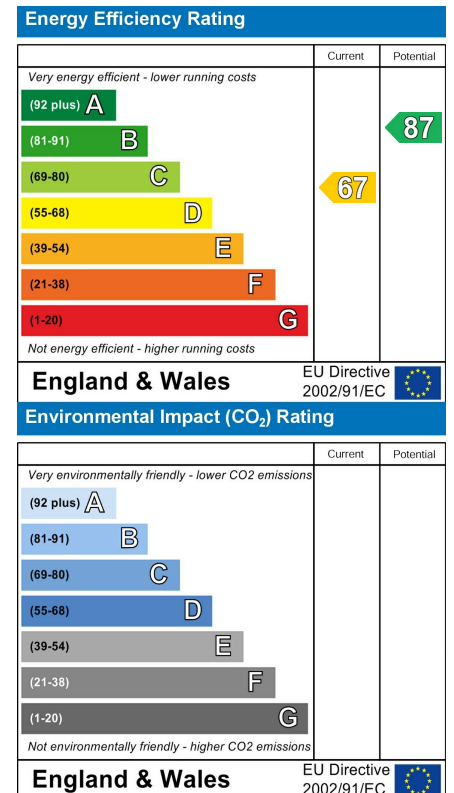
Area Map



Viewing

Please contact our House + Co Property (Sales) Office on 0117 907 0020 if you wish to arrange a viewing appointment for this property or require further information.

Energy Efficiency Graph



These particulars, whilst believed to be accurate are set out as a general outline only for guidance and do not constitute any part of an offer or contract. Intending purchasers should not rely on them as statements of representation of fact, but must satisfy themselves by inspection or otherwise as to their accuracy. No person in this firm's employment has the authority to make or give any representation or warranty in respect of the property.