



Flat 14, Kingsway Court 89, Two Mile Hill Road  
Kingswood, Bristol, BS15 1BL

**Asking price £199,950**



# Flat 14, Kingsway Court 89, Two Mile Hill Road



## Description

The size and space in this 2 bedroom flat 2nd floor flat is really lovely and with it set to the rear of the building there are views looking across the surrounding area.

Comprising inner reception area with access to the lift and stairs to this 2nd floor flat and the flat's private entrance. Inside there is an L-shaped hallway with large storage cupboard, a full width light and airy lounge /dining room with a modern fitted kitchen ( with fitted appliances such as cooker and gas hob, fridge freezer and washing machine ) and a Juliette balcony with french doors. There are also 2 bedrooms and a modern bathroom with shower.

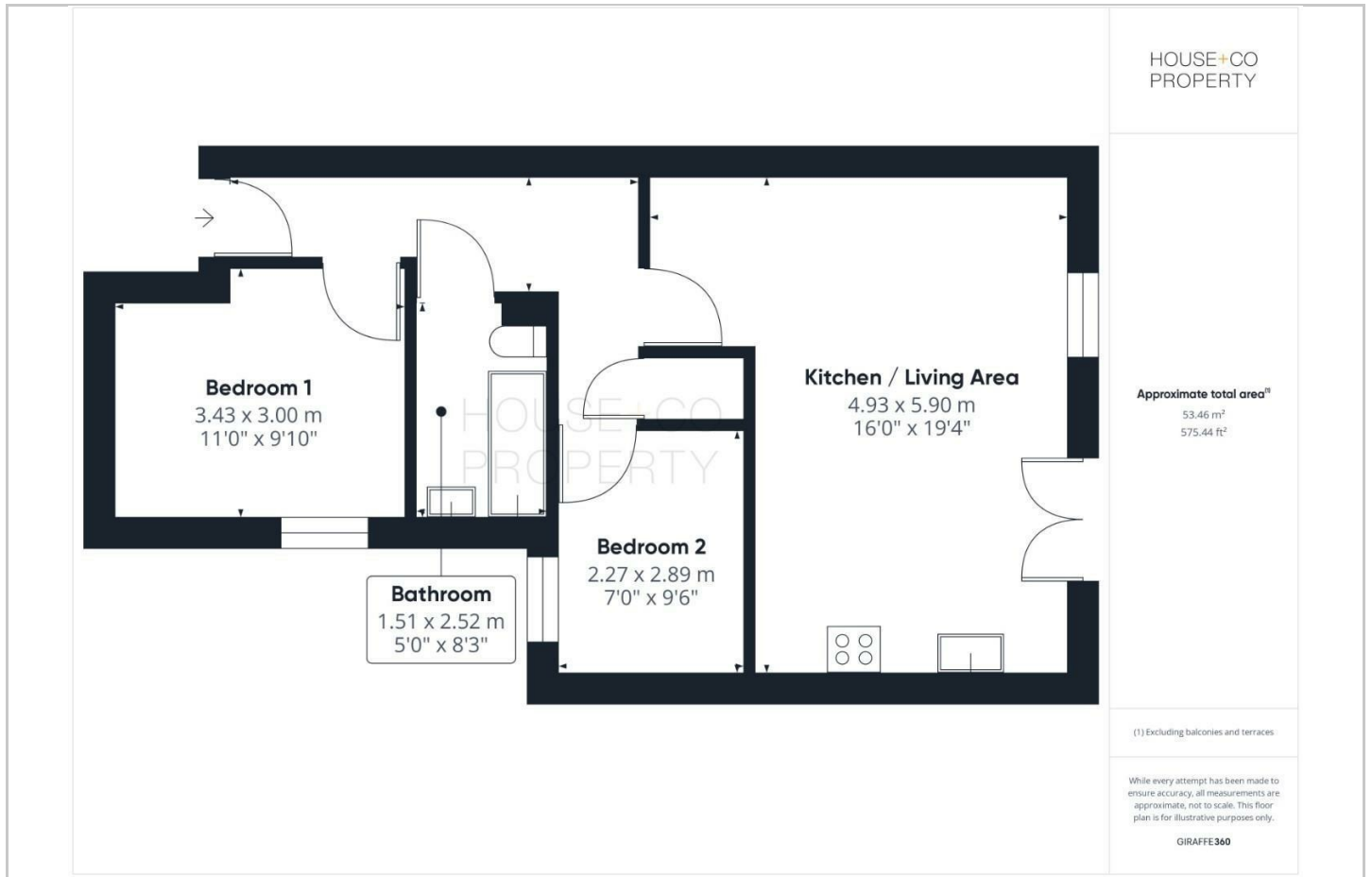
The flat also has an allocated parking space set to the secure parking area, Upvc double glazing and gas central heating from a combination boiler along with access to a bike store.

- 2 BEDROOM PURPOSE BUILT FLAT
- GAS CENTRAL HEATING FROM A COMBI BOILER
- MODERN BATHROOM
- SECOND FLOOR FLAT
- MANAGEMENT FEES OF ONLY £90 PCM
- ALLOCATED PARKING
- DOUBLE GLAZING
- STAIRS AND LIFT ACCESS
- REMAINS OF A 999 YEAR LEASE
- NO CHAIN !

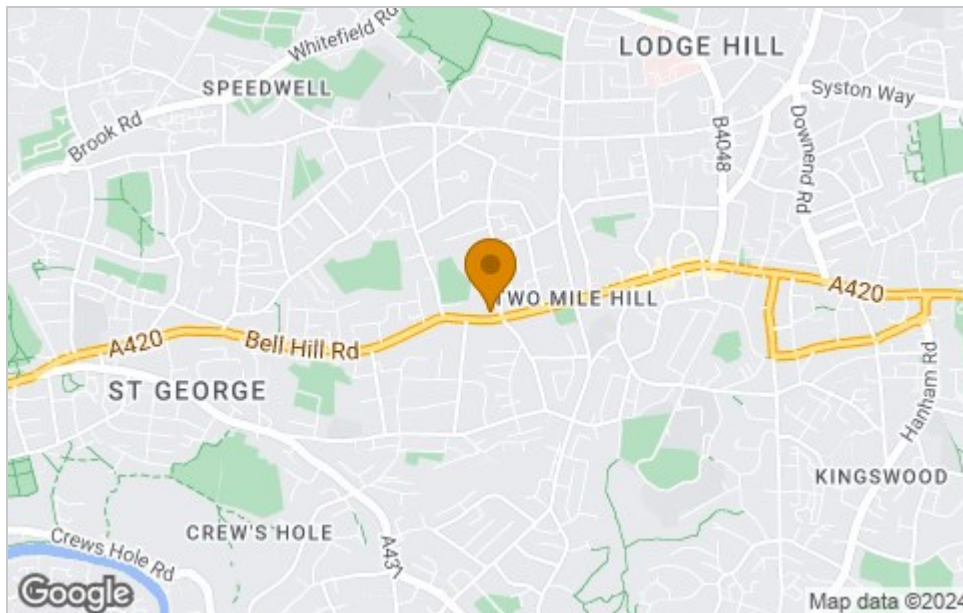




## Floor Plan



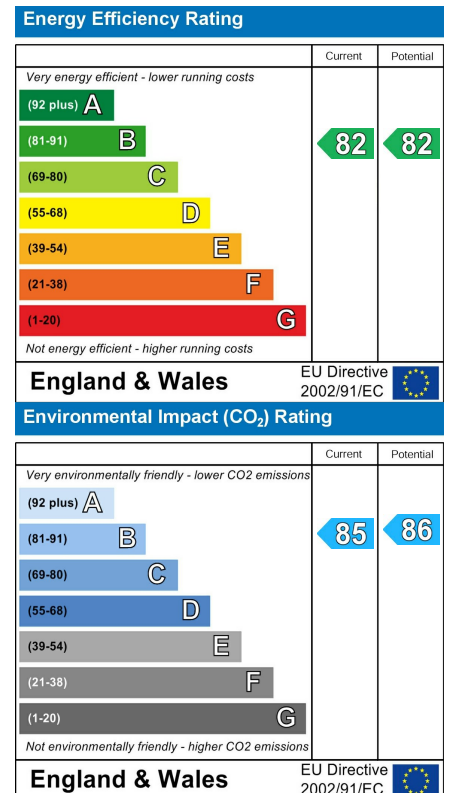
## Area Map



## Viewing

Please contact our House + Co Property (Sales) Office on 0117 907 0020 if you wish to arrange a viewing appointment for this property or require further information.

## Energy Efficiency Graph



These particulars, whilst believed to be accurate are set out as a general outline only for guidance and do not constitute any part of an offer or contract. Intending purchasers should not rely on them as statements of representation of fact, but must satisfy themselves by inspection or otherwise as to their accuracy. No person in this firm's employment has the authority to make or give any representation or warranty in respect of the property.