



34 Beacon Tower Fishponds Road

Fishponds, Bristol, BS16 3HQ

Guide price £195,000



2



1



1



1

34 Beacon Tower Fishponds Road



Description

Situated on the 6th floor, this modern flat in Beacon Tower is located in the heart of Fishponds. It offers a delightful living space for those seeking comfort and convenience, with plenty of amenities close by. Boasting open plan living, 2 double bedrooms, and 1 bathroom, this thoughtfully designed property provides a cosy yet stylish environment with stunning panoramic views!

With a generous 614 sq ft of space, this flat is perfect for individuals or small families, especially first-time buyers and investors. The property's modern age ensures a fresh and up-to-date feel throughout, such as a contemporary kitchen and spacious shower.

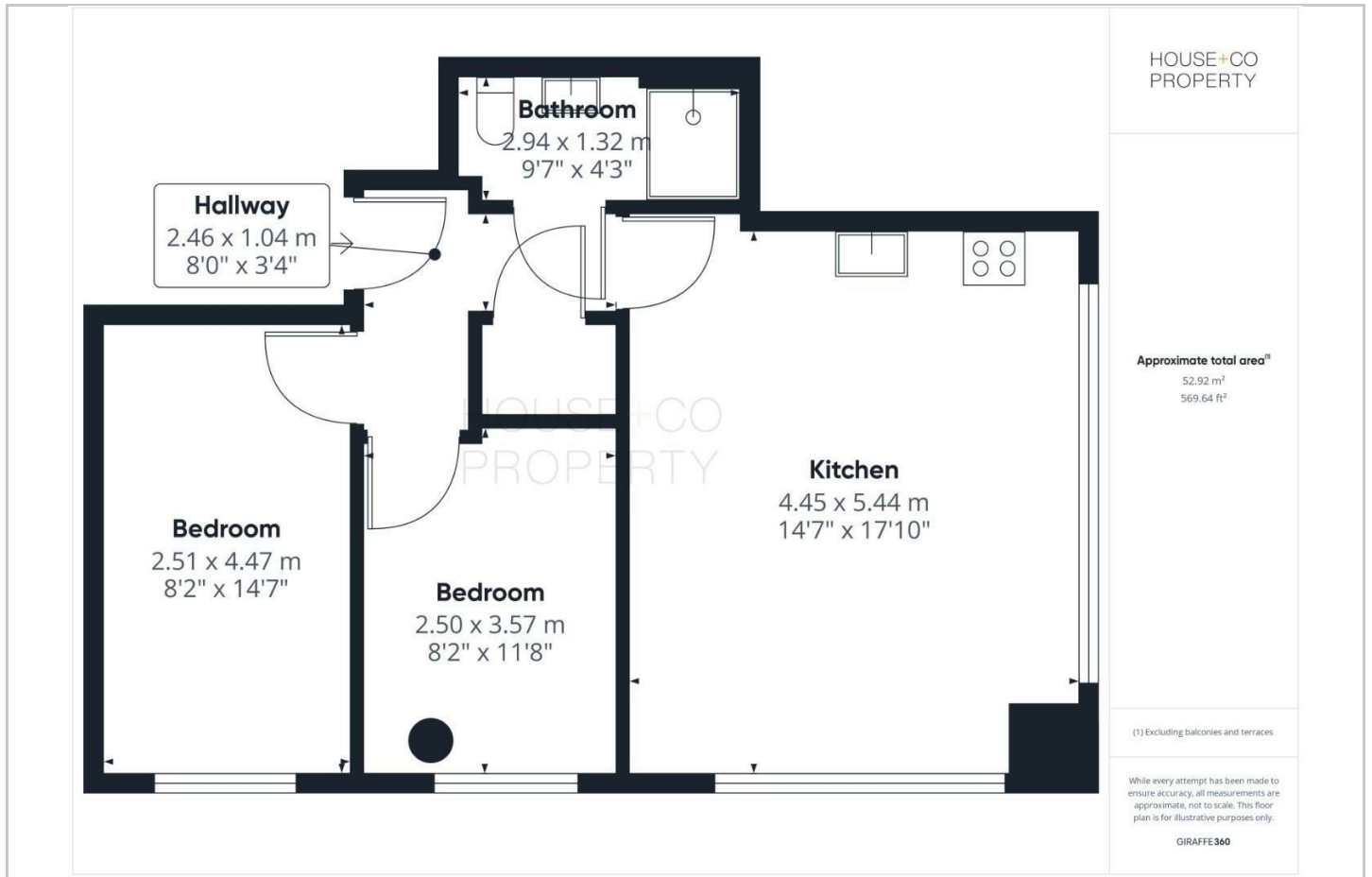
One of the highlights of this flat is the allocated parking space, a rare find in this bustling area, making it easy for residents to come and go as they please. Additionally, the communal outside chill area is a great spot to relax and unwind.

- 2 DOUBLE BEDROOMS
- MODERN KITCHEN AND BATHROOM
- ALLOCATED PARKING & SECURE BIKE STORAGE
- LEASEHOLD - 991 YEARS REMAINING
- UPVC DOUBLE GLAZED
- OPEN PLAN LIVING
- 6TH FLOOR WITH FAR REACHING VIEWS
- LIFT & COMMUNAL SEATING AREAS IN BLOCK
- WELL PRESENTED THROUGHOUT

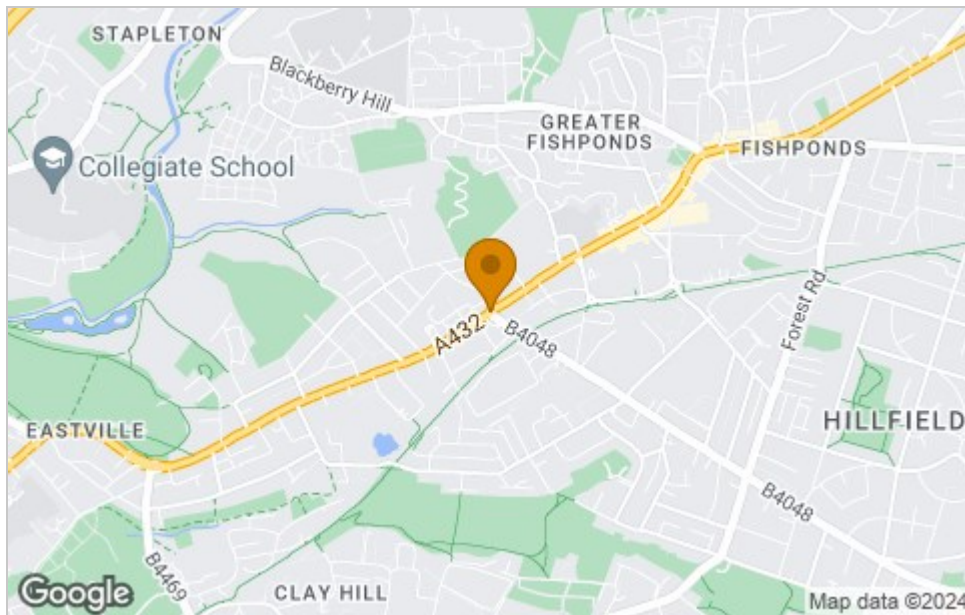




Floor Plan



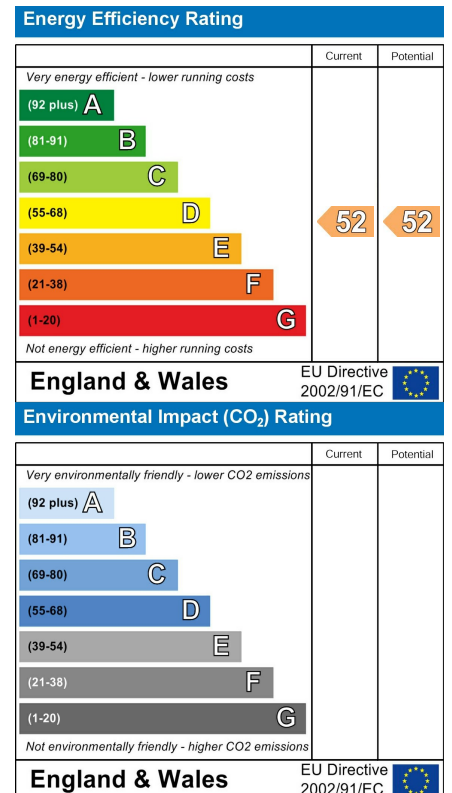
Area Map



Viewing

Please contact our House + Co Property (Sales) Office on 0117 907 0020 if you wish to arrange a viewing appointment for this property or require further information.

Energy Efficiency Graph



These particulars, whilst believed to be accurate are set out as a general outline only for guidance and do not constitute any part of an offer or contract. Intending purchasers should not rely on them as statements of representation of fact, but must satisfy themselves by inspection or otherwise as to their accuracy. No person in this firm's employment has the authority to make or give any representation or warranty in respect of the property.