



## Flat 1 Mill Court, Weavers Mill Close

St George, Bristol, BS5 8FF

**Asking price £220,000**



# Flat 1 Mill Court, Weavers Mill Close



## Description

This lovely 2 double bedroom ground floor flat is situated with in walking distance of Redfield / St George border walking distance of shops, cafes and bars and with great links into the city. It is also close to Netham playing fields, the Feeder river and cycle paths into the city and the regeneration of Temple Quarter.

Comprising communal hallway leading to the flat's private entrance and inner hallway with large storage cupboard, a spacious and light lounge which is open plan to a modern kitchen / diner, 2 double bedrooms and a modern bathroom with shower.

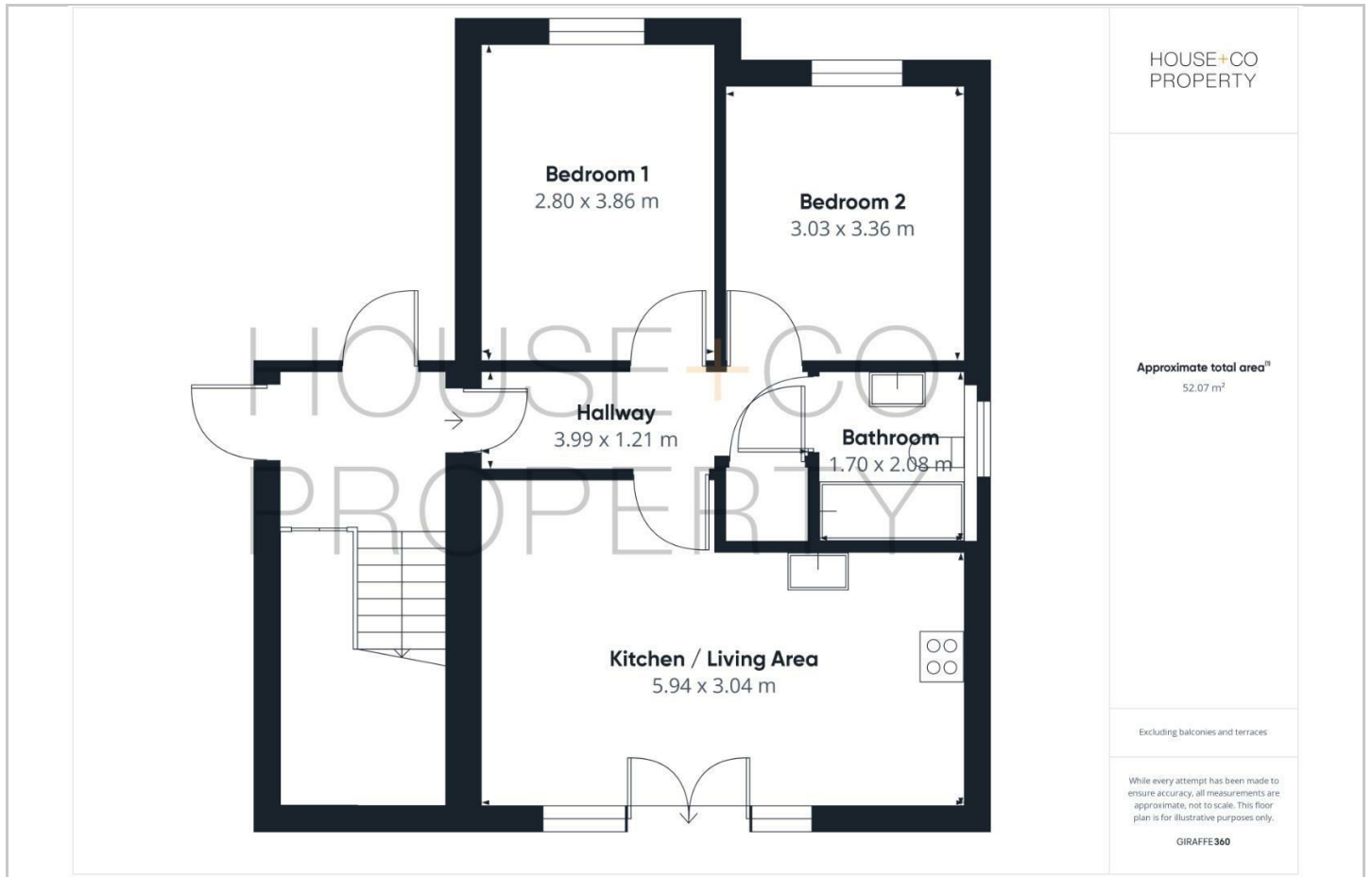
With double glazing, gas central heating from a combination boiler an allocated parking space in front of the flat and with large windows looking on to some scenic views.

- 2 DOUBLE BEDROOMS
- OFF STREET PARKING TO FRONT OF THE FLAT
- LOUNGE WITH LARGE FEATURE WINDOW
- BATHROOM WITH SHOWER
- £100 APPROX MONTHLY MANAGEMENT FEES
- GROUND FLOOR FLAT
- LARGE OPEN PLAN LIVING SPACE
- KITCHEN / DINING AREA
- SET UP ON THE REMAINS OF A 125 YEAR LEASE
- DOUBLE GLAZING AND GAS CENTRAL HEATING

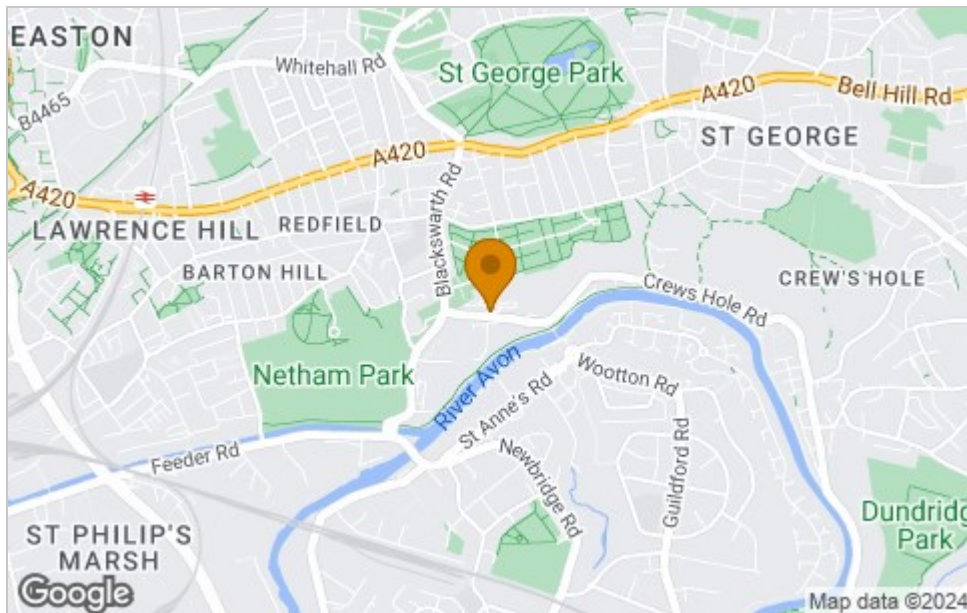




## Floor Plan



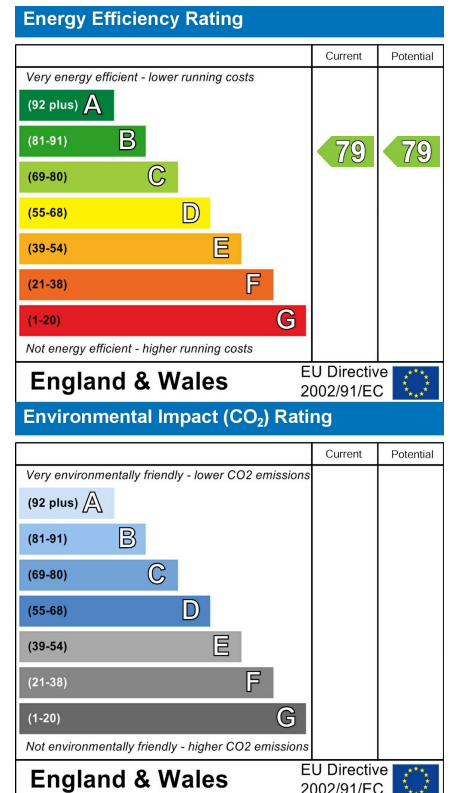
## Area Map



## Viewing

Please contact our House + Co Property (Sales) Office on 0117 907 0020 if you wish to arrange a viewing appointment for this property or require further information.

## Energy Efficiency Graph



These particulars, whilst believed to be accurate are set out as a general outline only for guidance and do not constitute any part of an offer or contract. Intending purchasers should not rely on them as statements of representation of fact, but must satisfy themselves by inspection or otherwise as to their accuracy. No person in this firm's employment has the authority to make or give any representation or warranty in respect of the property.