

45 QUEENS DRIVE
TAUNTON



Are you looking for a beautifully presented, generously sized family home, complete with a gorgeous garden in one of the prime locations in Taunton?

Then come fall in love with 45 Queens Drive.

Tastefully finished, recently renovated and full of elegant design features, this six-bedroom family home built in 2003 is a real find. This place is simply stunning – and that is evident from the very first impression. It may just find an instant connection with your heart and soul...

The sought-after area of Taunton is an extremely favoured location within Somerset. With its mixture of elegant properties set on pleasant leafy lanes, it feels full of life, style and community. This bustling town doesn't shout about its many positive attributes - and as one of the most desirable locations in the area it really doesn't need to. The ease of access to excellent schools and a wealth of leisure, medical and recreational facilities provide all amenities at a stone's throw. Transport links are excellent making the commute and further travel a doddle. It really does have it all.

This modern home is definitely worth a viewing. Expectations when approaching the property are significant and very well met – the glorious countryside is a pleasure to pass by - especially in the springtime - and the property is nestled into mature trees, keeping things tranquil and calm.





Kerb appeal is not misplaced, and first impressions when pulling onto the private driveway are just lovely. With more than ample parking, take a minute to soak up the leafy surroundings on your approach to the front door.

Walk through the front door into the generous entrance hall, which leads to the open plan kitchen/family room with utility room, dining room, lounge, study, garden room with kitchenette and gym. Two WCs complete this glorious ground floor layout and the array of ways to access the stunning outdoor space gives this home a really versatile feel.

Pop into the lounge with views through its beautiful window over the front of the property and French doors opening onto the patio. The feature fireplace and neutral decor give a taste of things to come in this property and create a cool, calming vibe.





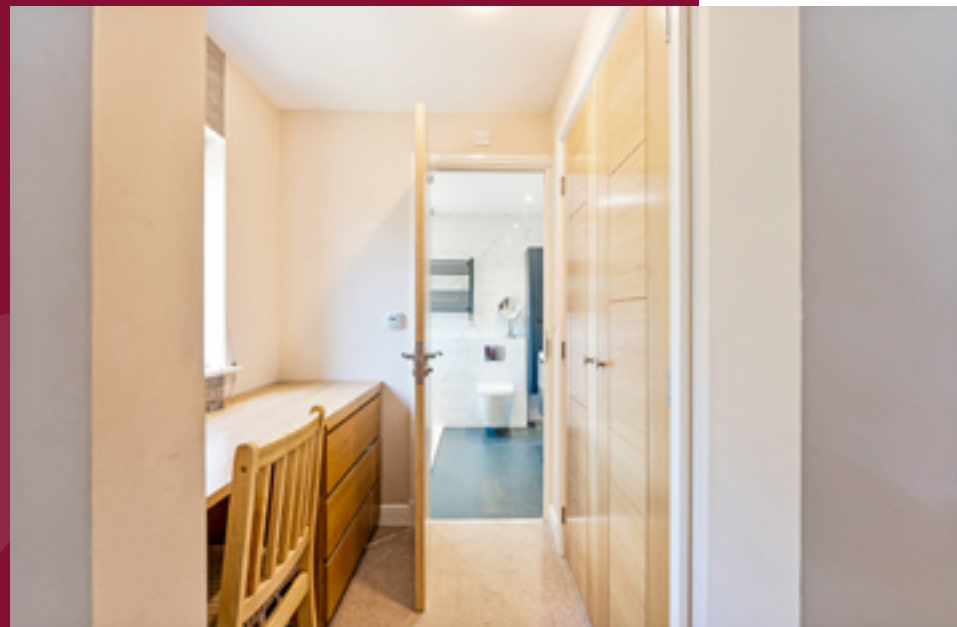
The sensational open concept kitchen/family room is the real hub of this home, showcasing open concept living at its best. The plethora of fitted kitchen units, space for a range of freestanding appliances, tiled floors and extensive worktops give a real sense of elegance and style. Drink that morning coffee with the bifold doors flung open in the summer months, enjoying the light and bright nature of this standout space. The utility room is located just next door for all the practicalities of family life, letting this stunning space sing – and with room for the biggest of tables in the dining area, this free-flowing area is more than capable of catering for family dinners and grown-up parties alike.



The garden room, currently being used as a games room, to the rear of the property is full of light and space, with large windows and patio doors opening directly onto the gorgeous garden. There is a lovely, calm feeling to this space - it brings that lovely idea of the outdoors, indoors to life. The adjacent kitchenette and WC give additional practicality and with some small internal adjustments (with relevant permissions), this part of the property could be the perfect self-contained area for elderly relatives or guests.

The office is a great size and neutrally decorated. A beautiful bay window lets in oodles of natural light, giving a feeling of cosy and calm – it's the perfect place for working from home.





The staircase carries on the feeling of contemporary light and space so evident in this property, and the galleried landing, with doors to four bedrooms (two en suite) and family bathroom, carries on this modern, generous trend.

Open the door to the spacious master bedroom where the large window captures the views out over the front garden and beyond. The décor is neutral and light and there is room for the biggest of beds with furniture to match. A spa-like ensuite bathroom and dressing room complete the most elegant space to unwind in at the end of a busy day.





Return to the landing and pop into bedroom two, where the modern décor is accented to perfection by its large window, giving unrivalled views across the rear garden. A comfortable double with plenty of room for storage, this is a lovely space to bed down for the night – and the en suite shower room makes this space just right for older children or guests alike.



Bedroom three also has that bright, airy feel and garden views to greet you. The natural light brought by its generous window makes it perfect for a child's bedroom or nursery perhaps. Bedroom four is a good size with views to the front of the property, is light and bright, with plenty of space to relax and get a great night's sleep or use as a home office.



The incredibly well-appointed family bathroom on this floor can keep up with the busiest of mornings with style and grace.

The landing leads to a further set of stairs which in turn lead to bedrooms five and six, another bathroom with bath and a shower-over, WC and wash hand basin and plenty of under-eave storage. The possibilities up here are limited only by your imagination.

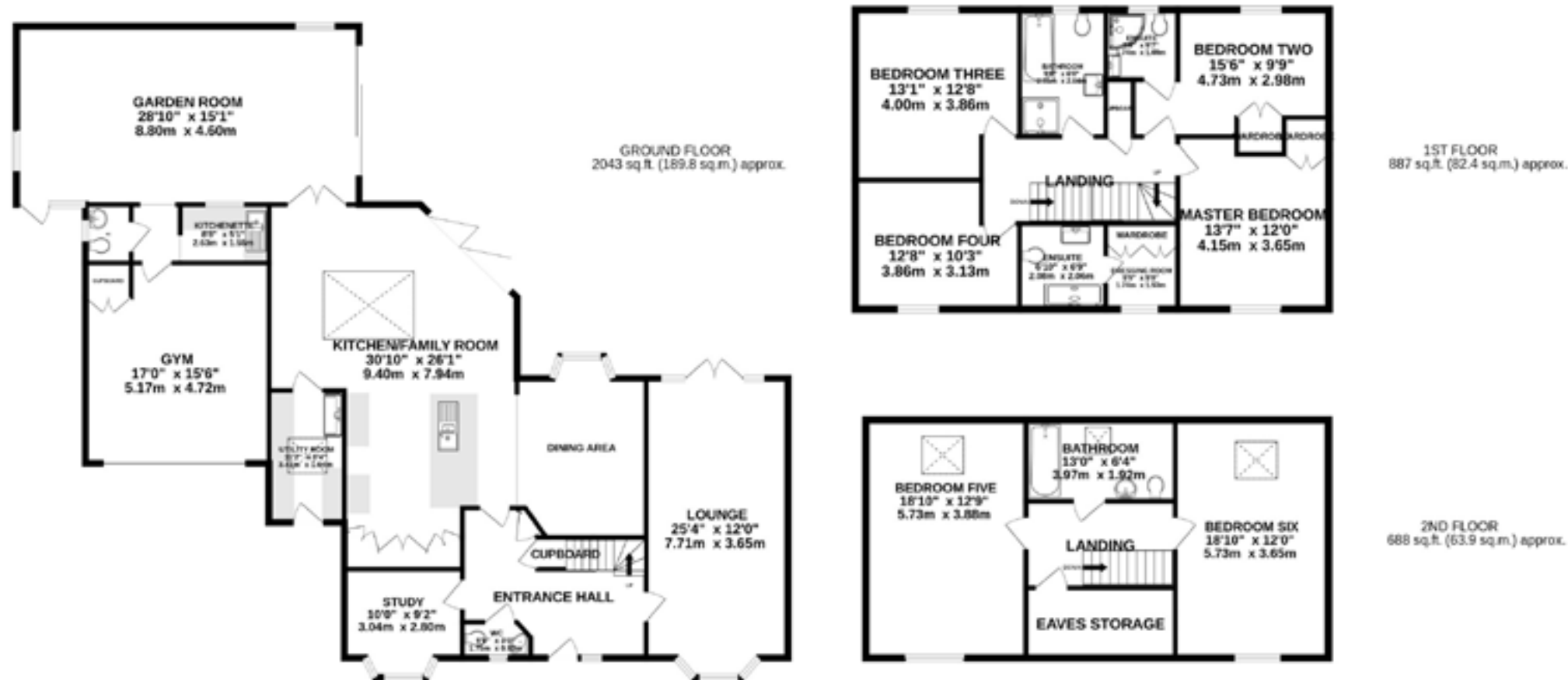


Take the stairs back to the ground floor and step outside into the glorious grounds.

The outside space around this home is absolutely marvellous. Lawned, decked and patio areas with meandering paths are all great spaces to relax and entertain, and the hedged & fenced boundaries backed by mature trees give a real sense of exclusivity, privacy and peace. Outdoor buildings include a workshop, storage areas and shed, with undercover areas should the weather change.

This plot is perfect for escaping from the hustle and bustle of daily life - and entertaining here is fabulous and wait until you hear the birdsong mixing with the babble of the brook nestled in the trees behind – so calming. Large patio spaces offer opportunities for al fresco dining whilst lush lawns are perfect for play time.





Scan QR code
for 360 tour

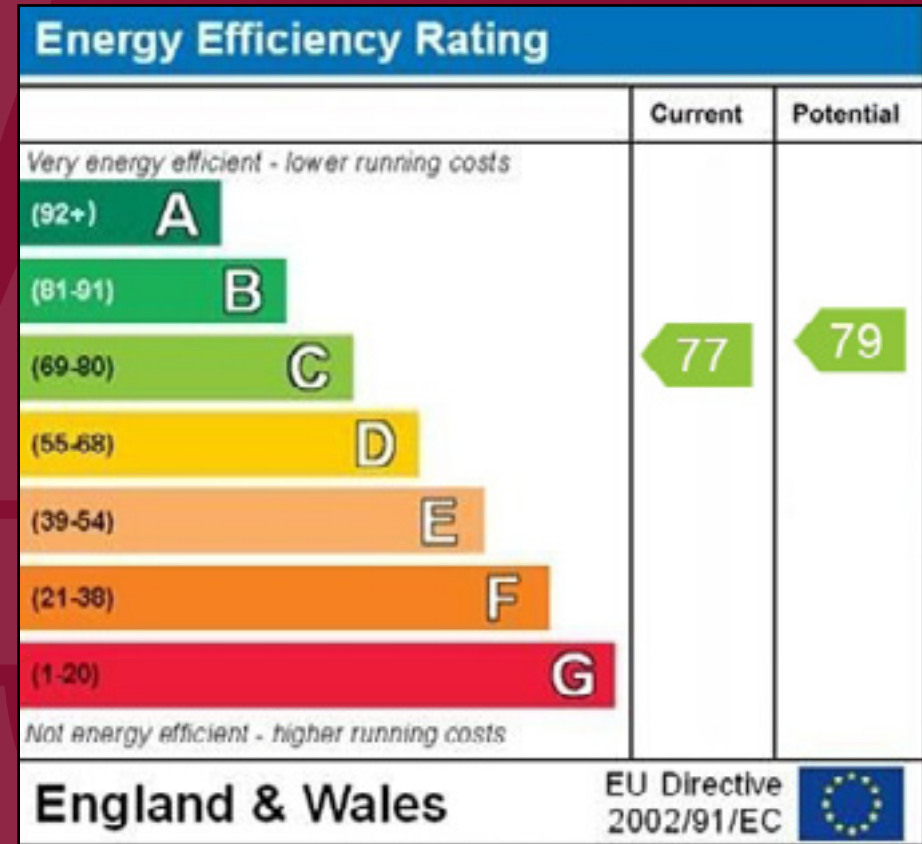
Scan QR code
to view video

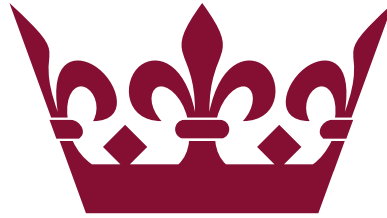
Don't miss out on the chance to own this fabulous family home! Properties like this don't come up on the market often and they certainly don't stay there for long.

Book a viewing with us today.

The details

- Stunningly presented six-bedroom detached home in the heart of sought-after TA1 postcode
- Total area approx. 336 square metres (3,618 square feet)
- Built in 2003 with recent renovations
- Double garage, workshop and private driveway
- Open plan living space
- Tenure: Freehold
- EPC rating: C





45 QUEENS DRIVE

TAUNTON

45 QUEENS DRIVE, TAUNTON, TA1 4XD

Book your viewing of 45 Queens Drive today and start your journey to owning your own unique home in a prominent location in Taunton.



BESPOKE

by northwood

Unique & Distinctive Homes

To arrange a viewing please contact Matthew Bingham or David Vann

taunton@northwooduk.com

01823 785444