

Milestone

RESIDENTIAL

CELEBRATING 125 YEARS

128 High Street, Whitton, TW2 7LL

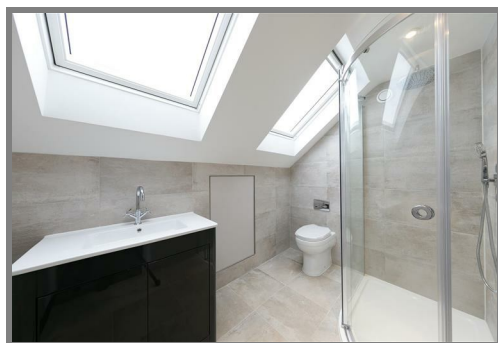
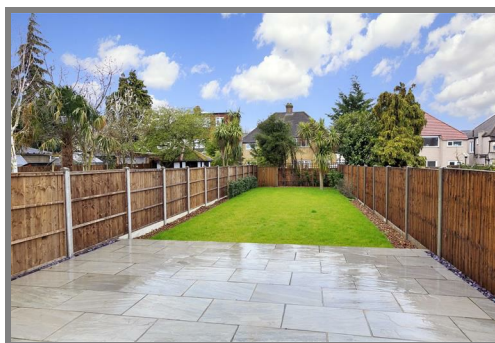
T: 020 8894 2855 F: 020 8755 0541

E: sales@milestoneresidential.com

28A Runnymede Road, Whitton, Middlesex TW2 7HF



Asking Price £749,950 Freehold



A STUNNING PAIR OF NEWLY BUILT SEMI DETACHED FAMILY HOMES OFFERING TRULY SPACIOUS FOUR BEDROOM ACCOMMODATION FINISHED TO A VERY HIGH AND STYLISH SPECIFICATION, WITH THE BENEFIT OF LOVELY LARGE WEST FACING REAR GARDENS IN A QUIET TREE LINED RESIDENTIAL ROAD IN CENTRAL WHITTON

www.milestoneresidential.com

Also branches at - Twickenham 020 8892 1313 • Teddington 020 8977 1166



28A Runnymede Road, Whitton, Middlesex TW2 7HF

FOR SALE:

These superbly appointed and luxuriously presented family homes offer extremely spacious four bedroom accommodation amounting to some 1722 square feet arranged over three floors . Features include a magnificent bright and airy open plan kitchen/family room with a comprehensive range of bespoke fitted units in a neutral Welford Grey colour and Carrera polished quartz work surfaces. There are integrated appliances by Neff including extractor, induction hob, microwave oven, fan assisted oven and American style fridge/freezer. There is a separate well proportioned living room, useful utility room and downstairs cloakroom. Upstairs arranged over two floors are four large bedrooms. The master bedroom suite having en suite shower/wc and walk in wardrobe. There is also a family bathroom/wc with overhead shower on separate thermostatic controls. The heating is via an efficient low cost Vaillant air source heat pump system with underfloor heating on the ground floor and zone control throughout. Outside there is off road parking to the front and a lovely sunny aspect west facing rear garden with large patio and lawn. An early viewing is highly recommended to appreciate these stunning homes.

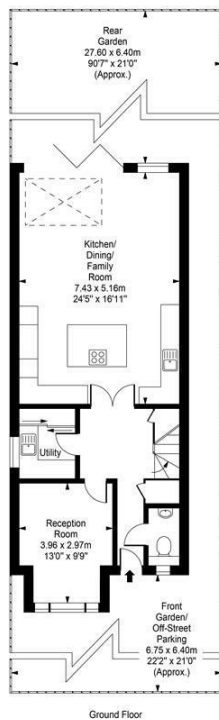
LOCATION:

Runnymede Road is a quiet tree lined residential road within 1/2 mile of Whitton High Street with its popular shops, cafes and railway station. Twickenham town centre with its more comprehensive shopping facilities and mainline station is also close to hand. There is easy access to central London via the A316 and the M3/M25/M4 corridor.

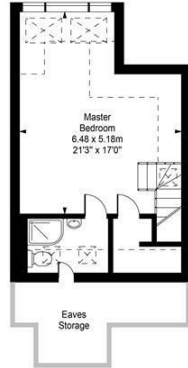


Runnymede Road
Approx. Gross Internal Area
160 Sq M - 1722 Sq Ft
(170 Sq M - 1829 Sq Ft Including Eaves Storage)

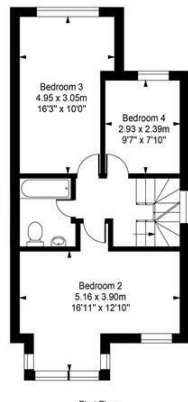
Key:
- - - Reduced headroom below 1.9m (6'3")



Ground Floor

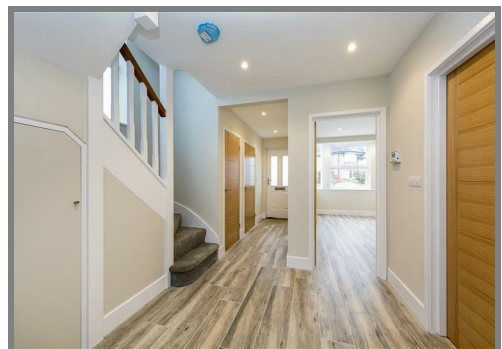


Second Floor



First Floor

Every attempt is made to assure accuracy, however measurements are approximate and for illustrative purposes only. Not to scale.
Floor plan by www.frameworkphotos.co.uk



Energy Efficiency Rating		Environmental Impact (CO ₂) Rating	
Very energy efficient - lower running costs	Current: 88, Potential: 96	Very environmentally friendly - lower CO ₂ emissions	Current: 89, Potential: 96
(92-95) A		(92-95) A	
(81-91) B		(81-91) B	
(69-80) C		(69-80) C	
(55-68) D		(55-68) D	
(39-54) E		(39-54) E	
(21-38) F		(21-38) F	
(1-20) G		(1-20) G	
England & Wales EU Directive 2002/91/EC		England & Wales EU Directive 2002/91/EC	

It is our aim to provide particulars that are both accurate and reliable but they are not guaranteed and would not form part of any offer or contract. Please contact us if you require clarification and we would be happy to assist. Please also note that the appliances and heating system have not been tested and therefore, no warranties can be given as to their condition.