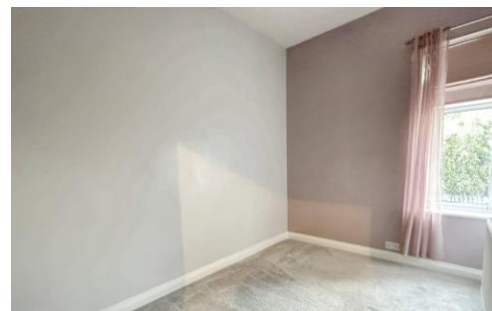




BARKERS

OPENING DOORS FOR YOU



507 Tong Street

Bradford, BD4 6NA

NO CHAIN -2/3 bedroomed mid terraced property situated in this popular and convenient location. Briefly comprises: Entrance porch, lounge, dining kitchen, two spacious cellars, two bedrooms, bathroom and a spacious occasional bedroom on the second floor. Externally there are garden areas to the front and rear.

Asking Price £140,000

EPC Rating E

- ⌘ MID TERRACE PROPERTY
- ⌘ TWO BEDROOMS
- ⌘ OCCASIONAL BEDROOM TO THE SECOND FLOOR
- ⌘ FAMILY BATHROOM
- ⌘ GARDEN TO FRONT
- ⌘ YARD AREA TO THE REAR

