

Agents Note: Whilst every care has been taken to prepare these sales particulars, they are not be relied upon and potential buyers are advised to recheck the measurements for guidance purposes only. All measurements are approximate are for general guidance purposes only and whilst every care has been taken to ensure their accuracy, they should not be relied upon and potential buyers are advised to recheck the measurements

Protected

Protected

Protected

The Property Ombudsman

nthemarket.com

enquiries@barkersstatagents.co.uk

0113 2879344

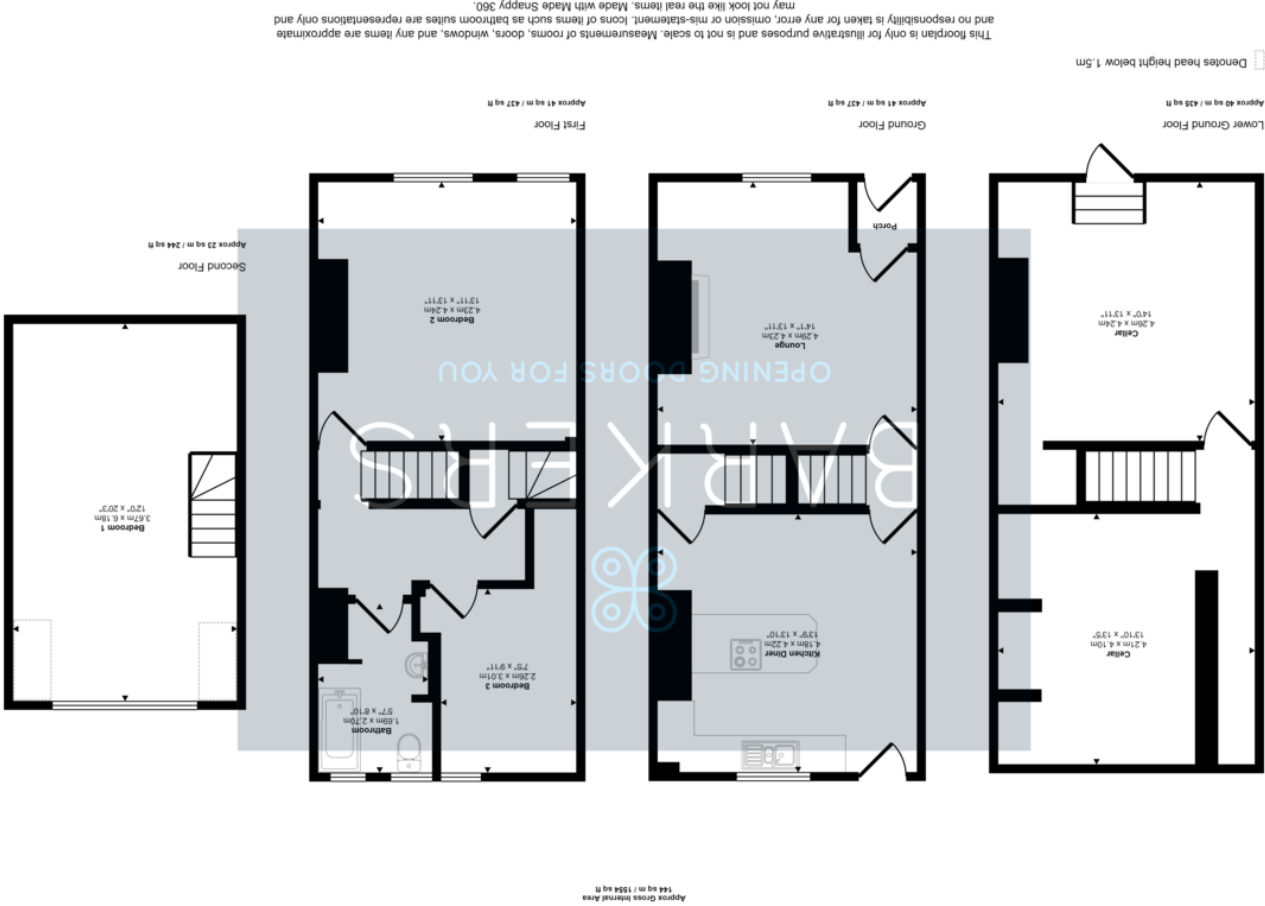
www.barkersstatagents.co.uk

4 Old Lane,

Birkenshaw, Bradford

West Yorkshire, BD11 2JX

Score	Energy rating	Current	Potential
92+	A		
81-91	B		
69-80	C		
55-68	D		
39-54	E		
21-38	F		
1-20	G		



BARKERS

OPENING DOORS FOR YOU



507 Tong Street
Bradford, BD4 6NA
Asking Price £140,000

- MID TERRACE PROPERTY
- TWO BEDROOMS
- OCCASIONAL BEDROOM TO THE SECOND FLOOR
- FAMILY BATHROOM
- GARDEN TO FRONT
- YARD AREA TO THE REAR
- GAS CENTRAL HEATING
- UPVC DOUBLE GLAZING
- NO CHAIN
- GARDEN SHED



Full Description

Barkers are pleased to offer For Sale this two bedroom terraced house offered with No Chain and situated in this popular and convenient location. The accommodation has the benefit of gas central heating and uPVC double glazing and briefly comprises: Entrance porch, lounge, dining kitchen, two spacious cellars, two bedrooms, bathroom and a spacious occasional bedroom on the second floor. Externally there are garden areas to the front and rear.

ENTRANCE PORCH

With door into lounge.

LOUNGE

14' 0" x 13' 10" (4.29m x 4.23m)

Spacious light and airy room with a gas fire set in Adam style surround. Door leading to kitchen and stairs to first floor. Laminate flooring. Central heating radiator.

KITCHEN/DINER

13' 8" x 13' 10" (4.18m x 4.22m)

Fitted with a range of wall and base units and featuring 4 ring electric hob, built in electric oven, ceramic sink with mixer tap and drainer. Space for washing machine. Part tiled walls. Laminate flooring. Spotlights to ceiling. Door to cellar. Central heating radiator.

CELLAR ONE

13' 9" x 13' 5" (4.21m x 4.10m)

Spacious cellar.

CELLAR TWO

13' 11" x 13' 10" (4.26m x 4.24m)

Spacious cellar.

FIRST FLOOR LANDING

With doors to two bedrooms and bathroom.

BEDROOM ONE

13' 10" x 13' 10" (4.23m x 4.24m)

Large double bedroom. With dual aspect windows. Central heating radiator.

BEDROOM TWO

7' 4" x 9' 10" (2.26m x 3.01m)

Spacious single bedroom. Central heating radiator.

BATHROOM

5' 6" x 8' 10" (1.69m x 2.70m)

Featuring a white three piece suite with bath with electric shower over and glass screen, WC and wash hand basin. Part tiled walls. Vinyl flooring. Chrome heated towel rail.

OCCASIONAL BEDROOM

12' 0" x 20' 3" (3.67m x 6.18m)

Second floor spacious attic room. Two central heating radiators.



EXTERNAL

The property features a garden to the front with lawned area and path with steps leading to the front door. To the rear is a paved garden area and featuring a garden shed.

ADDITIONAL INFORMATION

Tenure: Freehold

Council Tax Band: A

