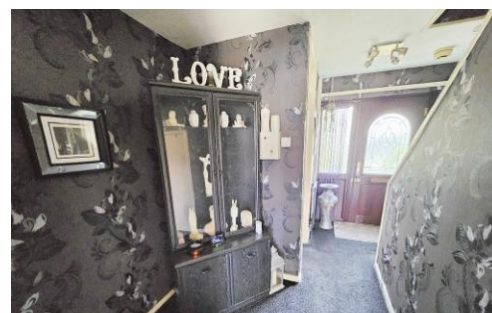
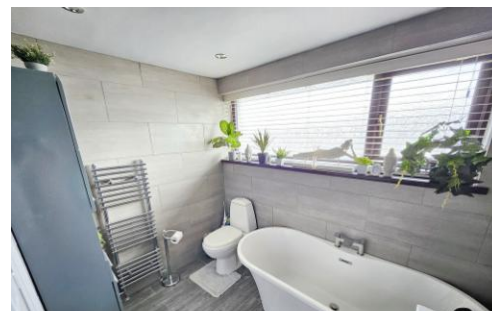




# BARKERS

OPENING DOORS FOR YOU



## 46 Grayswood Drive

Bradford, BD4 9ES

Well presented THREE bedroomed mid townswomen with gardens to the front and rear. Briefly comprises: Entrance hall, cloaks/W.C. lounge, dining kitchen, three DOUBLE bedrooms and modern bathroom.

## Asking Price £129,995

EPC Rating C

- ☼ WELL PRESENTED MID TOWNHOUSE
- ☼ ENTRANCE HALL, CLOAKS/W.C.
- ☼ LOUNGE, DINING KITCHEN
- ☼ THREE DOUBLE BEDROOMS
- ☼ HOUSE BATHROOM
- ☼ GARDENS FRONT & REAR

