



7 Heckley Road | Exhall | CV7 9EX

PERFECT FIRST TIME BUYERS HOME A WELL PRESENTED FIRST FLOOR MAISONETTE IN A POPULAR RESIDENTIAL AREA HAVING REFITTED BATHROOM & KITCHEN AND IN MORE DETAILS COMPRISES; ENTRANCE. LOUNGE/DINER. KITCHEN. TWO BEDROOMS. BATHROOM. THE PROPERTY ALSO HAS THE BENEFIT OF UPVC DOUBLE GLAZED WINDOWS AND ALLOCATED PARKING & GROUND FLOOR STORE CUPBOARD:

leasehold, Monthly management charge: £80.00, lease valid until December 2989

Council Tax Band A. EPC Rating D

Offers In Region Of £115,000

- Perfect For First Time Buyers
- First Floor Maisonette
- Two Bedrooms & Bathroom
- Lounge & Fitted Kitchen
- Offered With No Chain



Property Description

PERFECT FIRST TIME BUYERS HOME A WELL PRESENTED FIRST FLOOR MAISONETTE IN A POPULAR RESIDENTIAL AREA HAVING REFITTED BATHROOM & KITCHEN AND IN MORE DETAILS COMPRISES; ENTRANCE. LOUNGE/DINER. KITCHEN. TWO BEDROOMS. BATHROOM. THE PROPERTY ALSO HAS THE BENEFIT OF UPVC DOUBLE GLAZED WINDOWS AND ALLOCATED PARKING & GROUND FLOOR STORE CUPBOARD:

leasehold, Monthly management charge: £80.00, lease valid until December 2989

Council Tax Band A. EPC Rating D

Entrance Vestibule

Having UPVC double glazed entrance door, stairs to first floor, UPVC double glazed window to rear aspect, smoke alarm.

Lounge/Dining Room

15' x 12' 10" (4.57m x 3.91m) UPVC double glazed window to rear aspect, fitted carpet, feature fireplace with electric fire, dado rail and coved ceiling.

Kitchen

11' 2" x 8' 0" (3.40m x 2.44m) Fitted with range of matching base units and wall cupboards, roll top work surfaces with complimentary tiling to splash back areas, inset single drainer stainless steel sink unit, built in oven and hob with extractor hood over, fridge/freezer & washing machine. UPVC double glazed window to rear aspect, ceramic tiled flooring.

Bedroom One

10' 9" x 9' 11" (3.28m x 3.02m) UPVC double glazed window to front aspect, fitted carpet, electric storage heater.

Bedroom Two

10' 11" x 7' 9" (3.33m x 2.36m) UPVC double glazed window to front aspect, laminate flooring, electric storage heater.

Bathroom

Panelled bath with shower over, wash hand basin set into vanity unit, low level W.C, fully tiled walls, ceramic tiled flooring, extractor fan, electric towel rail, storage cupboard.

Outside

Having allocated parking space and outside storage cupboard.

GENERAL INFORMATION / MATERIAL INFORMATION PART C

Nuneaton & Bedworth Borough Council. Council Tax Banding A. EPC D.

Located in a no flood risk area. Certain areas in Bedworth and Exhall are located in a ex coal mining area.

The Vendor has informed the agents, they are not aware of any building safety issues.

No Planning Considerations.

The Vendor has informed the agents construction is Standard Brick.

TENURE: We understand from the vendors that the property is leasehold.

SERVICES: Russell Cope Estate Agents have not tested any apparatus, equipment, fittings, etc, or services to this property, so cannot confirm they are in working order or fit for the purpose. A buyer is recommended to obtain confirmation from their Surveyor or Solicitor.

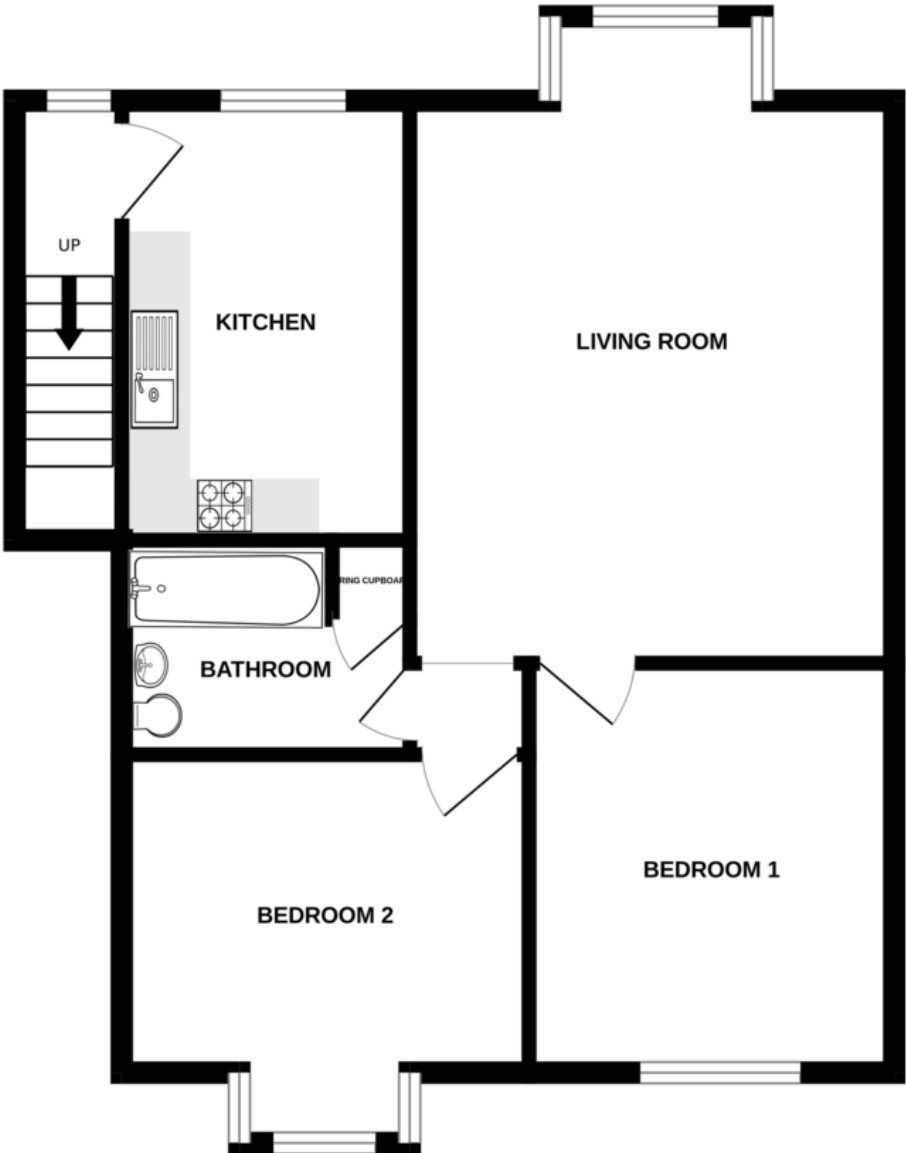
FIXTURES AND FITTINGS: only those as mentioned in these details will be included in the sale.

MEASUREMENTS: the measurements provided are given as a general guide only and are all approximate.

VIEWING: by prior appointment through the Sole Agents.



1ST FLOOR MAISONETTE



Tenure

Leasehold

Council Tax Band

A

Viewing Arrangements

Strictly by appointment

Agents Note: Whilst every care has been taken to prepare these sales particulars, they are for guidance purposes only. All measurements are approximate are for general guidance purposes only and whilst every care has been taken to ensure their accuracy, they should not be relied upon and potential buyers are advised to recheck the measurements

Energy Efficiency Rating		
	Current	Potential
Very energy efficient - lower running costs		
(92+) A		
(81-91) B		
(69-80) C		78
(55-68) D	68	
(39-54) E		
(21-38) F		