



240 Marine Road Central, Morecambe
Morecambe

Offers in Region of £350,000





240 Marine Road Central

Morecambe, Morecambe

3 / 4 Bedroom Beach Front Luxury Apartment with Versatile Space, Dedicated Parking, & No Onward Chain
Council Tax band: A

Tenure: Leasehold

- 3 Bedrooms w/ Dressing Room as potential 4th
- Fully Re-decorated with modern, high-quality finishes
- Dedicated off-street parking for 2 w/ permit access to private car park
- Open-plan living w/ panoramic views of Morecambe Bay, Midland & Eden Site
- High-spec features, quartz worktops, cast iron radiators, underfloor heating & Sonos sound system
- Energy-efficient Hive heating system and secure integral alarm
- Prime filming location, prominently featured in ITV's The Bay and Netflix's Stay Close
- Lift access for both convenience and accessibility
- Situated on the promenade with easy access to shops, transport links, and iconic landmarks like the Eric Morecambe statue
- Transport & Travel Links





The Apartment

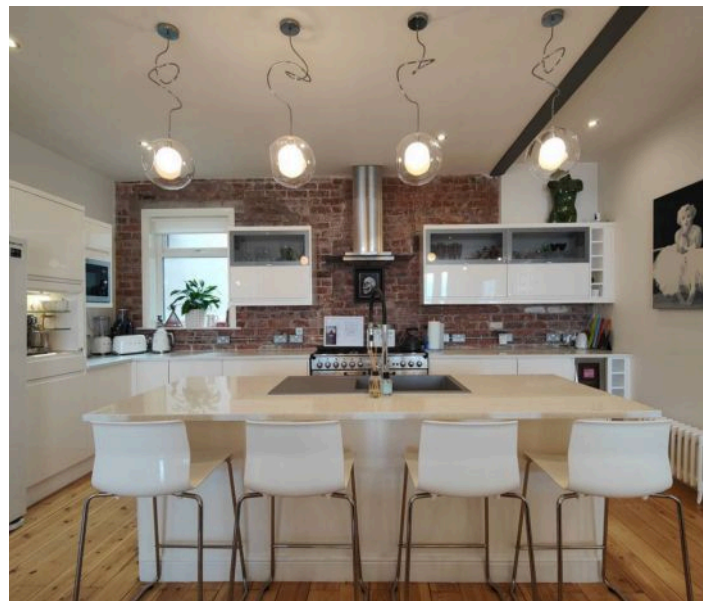
Tailored for flexible living, this apartment offers adaptable spaces that cater to families, investors, or professionals. This remarkable first-floor apartment is part of an exclusive conversion of the historic Palladium building, completed in 2016. The shared entrance celebrates Morecambe's vibrant history, and a private lift takes you to an elegant landing shared with just one other property. The open-plan living area features striking design elements, from exposed brick fireplaces and Danish-finished hardwood flooring to sash-style windows and industrial girders. A central hub for family and guests alike, this expansive area invites relaxation and entertainment while framing uninterrupted sea views across its triple bay windows.

Step Inside

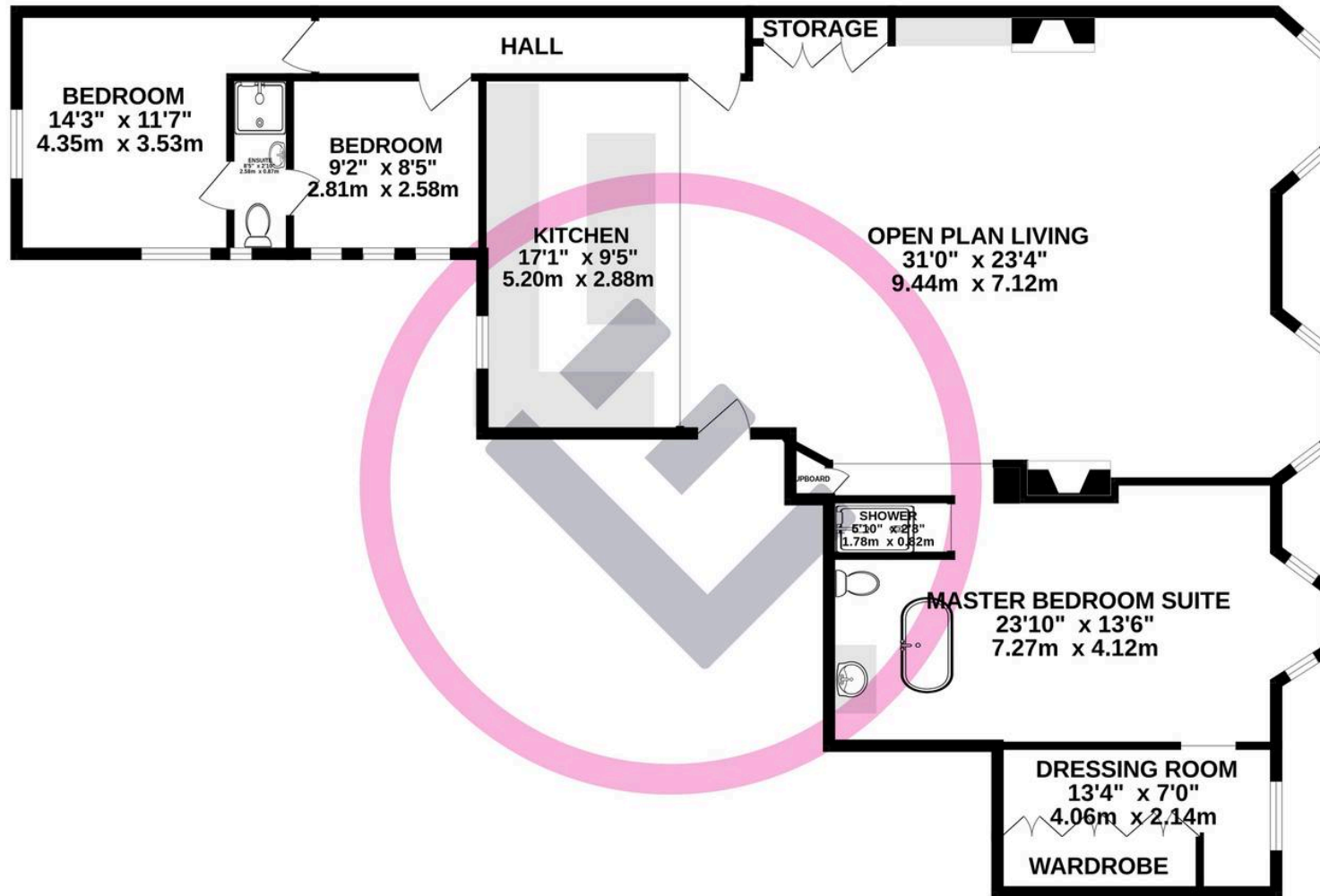
As you step through the front door, the sheer size of the open-plan living is quite breathtaking. At almost 1500 square feet, the apartment is significantly larger than the average UK house*. The living area is situated to the front and incorporates two exposed brick fireplaces and two bay windows, affording panoramic sea views. The exposed metal girders add an industrial touch without detracting from the elegance of bays and sash windows. The flooring is stripped hardwood floorboards finished with a Danish high-shine hard-wearing lacquer, and the ceilings are high, accentuating the sense of space and light.

Next Steps

This striking apartment must be viewed to fully appreciate its luxury, size, and potential. Contact us today to arrange a viewing and discover how this residence can offer more than just a home – it's a lifestyle and an investment in Morecambe's exciting future.



FIRST FLOOR
1472 sq.ft. (136.7 sq.m.) approx.



TOTAL FLOOR AREA : 1472 sq.ft. (136.7 sq.m.) approx.

Whilst every attempt has been made to ensure the accuracy of the floorplan contained here, measurements of doors, windows, rooms and any other items are approximate and no responsibility is taken for any error, omission or mis-statement. This plan is for illustrative purposes only and should be used as such by any prospective purchaser. The services, systems and appliances shown have not been tested and no guarantee as to their operability or efficiency can be given.

Made with Metropix ©2025



Lancastrian Estates

301/302, Riverway House, Morecambe Road - LA1 2RX

01524 555800 · lancaster@lancastrianestates.co.uk · www.lancastrianestates.co.uk/