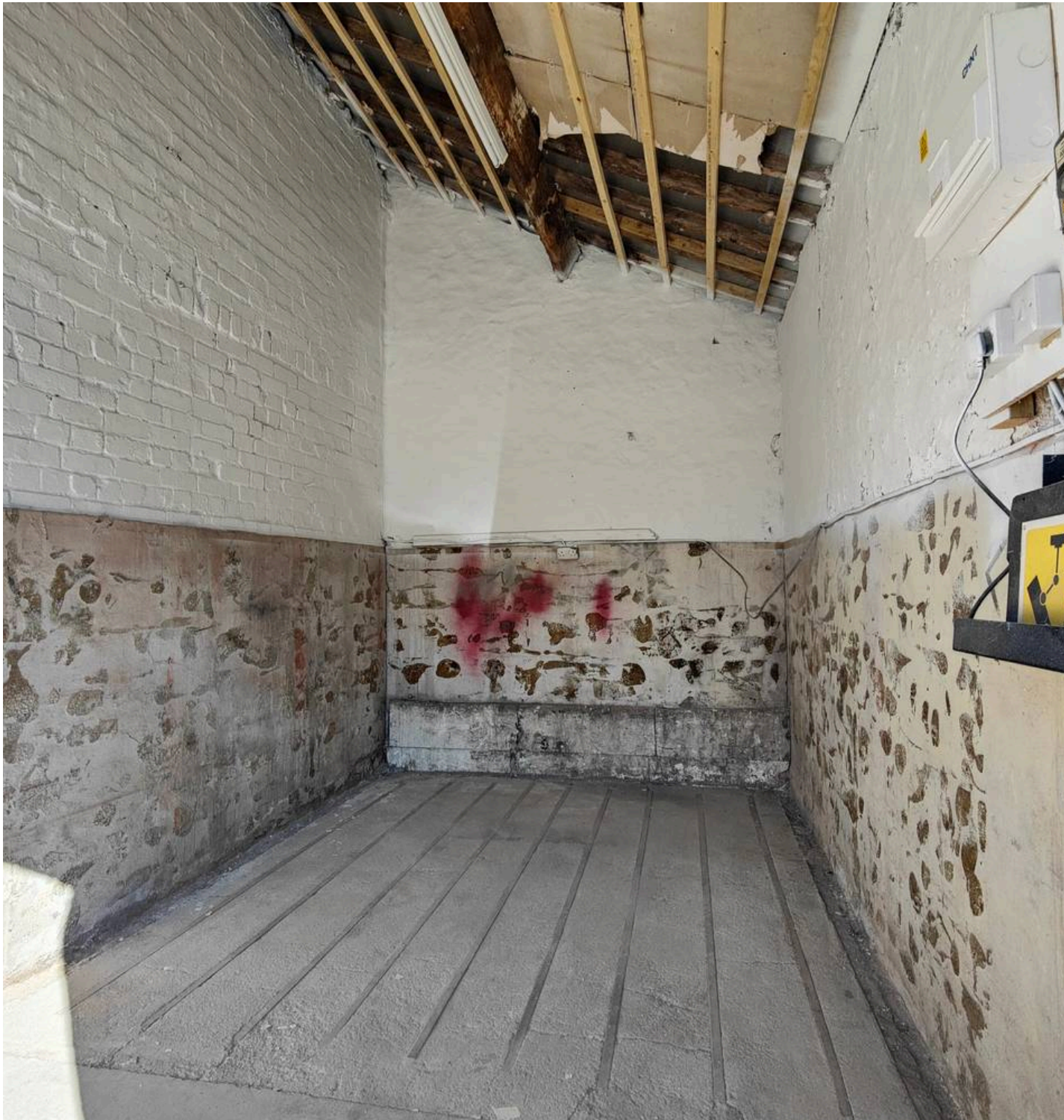




5 Bridge Road, Morecambe  
£75,000





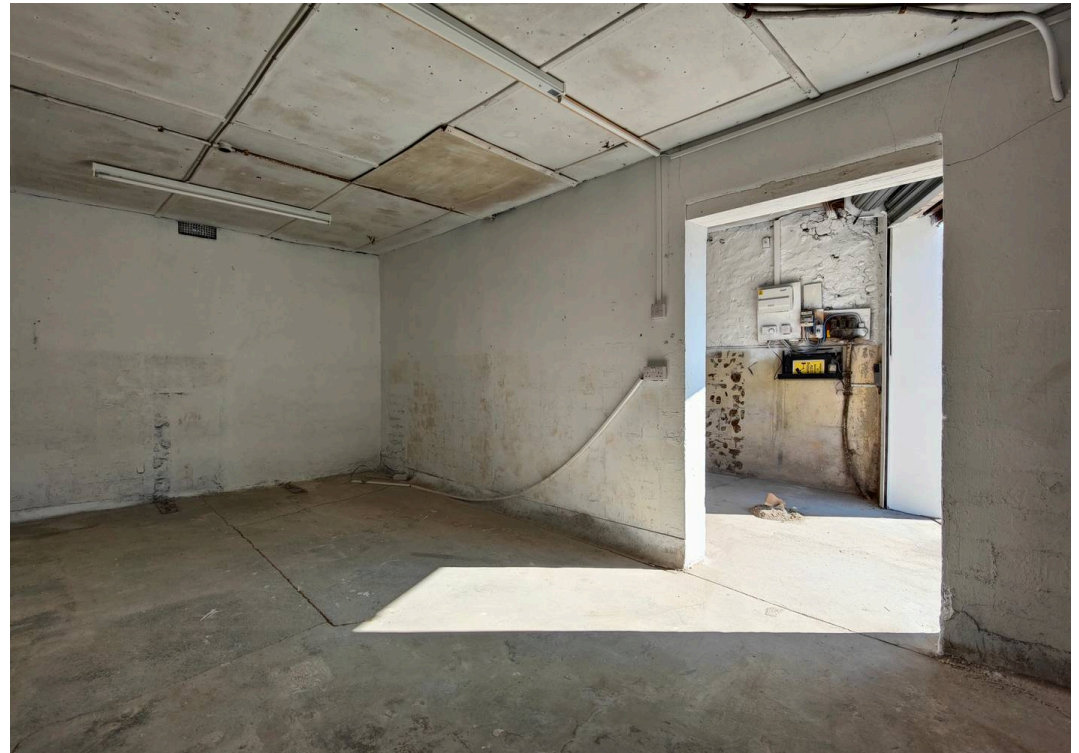
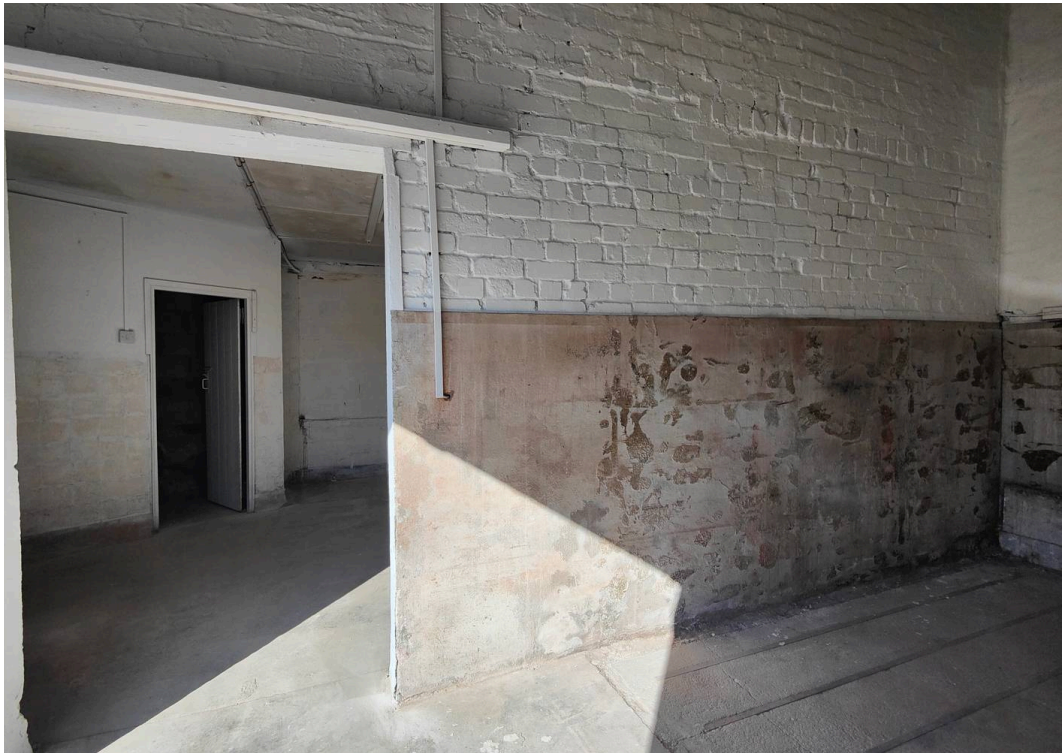
## 5 Bridge Road

, Morecambe

Prime warehouse/garage/commercial premises in central area with superb amenities. Features electric roller door, spacious garage, workshop, loft storage. Great transport links, vibrant surroundings. Ideal for dynamic businesses seeking versatile space in a thriving community. Council Tax band: TBD

Tenure: Freehold

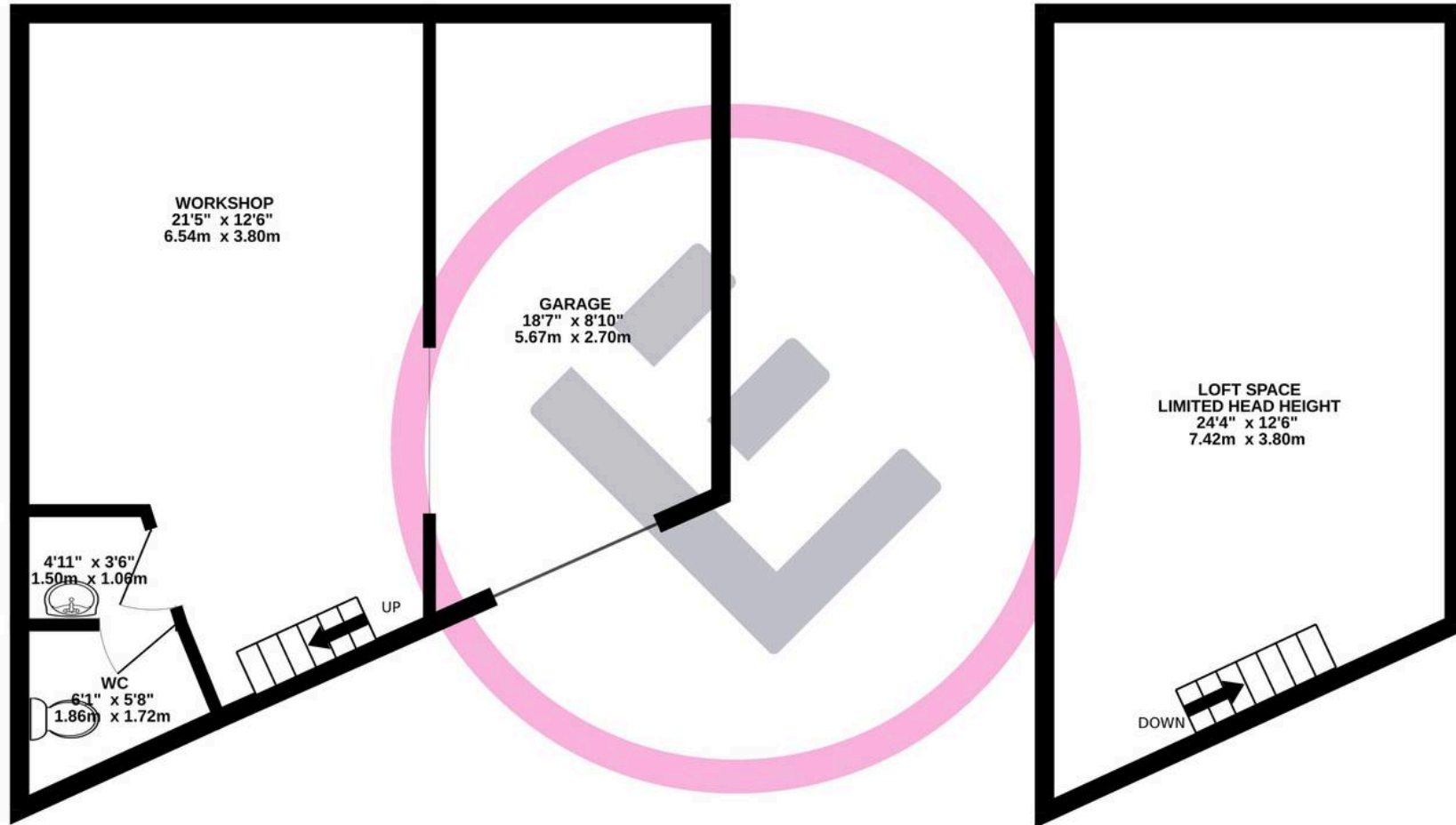
- Garage/ Lock Up
- Commercial Premises
- Central Area
- Good Local Amenities
- Electric Roller Door
- Garage Space
- Workshop Space
- Loft Storage
- Transport & Travel Links
- Shops & Housing Mixed Use Area





GROUND FLOOR  
414 sq.ft. (38.5 sq.m.) approx.

1ST FLOOR  
268 sq.ft. (24.9 sq.m.) approx.



TOTAL FLOOR AREA : 682 sq.ft. (63.3 sq.m.) approx.

Whilst every attempt has been made to ensure the accuracy of the floorplan contained here, measurements of doors, windows, rooms and any other items are approximate and no responsibility is taken for any error, omission or mis-statement. This plan is for illustrative purposes only and should be used as such by any prospective purchaser. The services, systems and appliances shown have not been tested and no guarantee as to their operability or efficiency can be given.

Made with Metropix ©2024

You can include any text here. The text can be modified upon generating your brochure.

