



22 Chapel Street, Galgate
£189,950





22 Chapel Street

Galgate, Lancaster

Farmhouse style doors and deep stone walls combine with modern interiors offering you the best of both worlds at this 3 bed, 3 storey cottage. Step inside, a bright welcome awaits and there is a landscaped rear garden.

Council Tax band: A

Tenure: Freehold

- Terraced House
- Kitchen Diner & Utility
- Recently Redecorated
- Stylish Lounge w/Media Wall
- Stylish Bathroom
- Cottage Character Property
- Great Village Amenities
- Transport & Travel Links
- Landscaped Rear





The House

Built circa 1830 this house will captivate you from when you first step inside. The house offers so much style and character throughout, farmhouse style doors and deep stone walls combine with stylish modern décor and fresh, bright feel. There are three floors and to the lower ground floor you will find a stylish and large lounge overlooking a landscaped garden.

Living Space

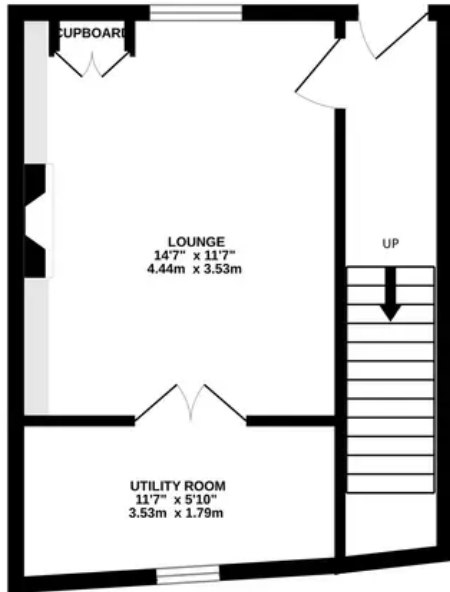
The kitchen diner is finished with ivory cabinets and has an integrated double oven, extractor fan and dishwasher. The gloss granite effect work top has a matching breakfast bar. The cupboards house a variety of useful storage options including deep pan drawers and a corner pull out carousel to utilise the full corner space. With a breakfast bar and room for a table and chairs there is plenty of space to dine. A white painted original door opens to the stairs leading to the first floor. Downstairs you will find a relaxing and modern lounge with newly installed media wall and views out over the landscaped rear garden. Fresh, modern décor enhancing the light, bright feel. There is also a handy utility room on this floor which has plenty of space for storage as well as washer and dryer.



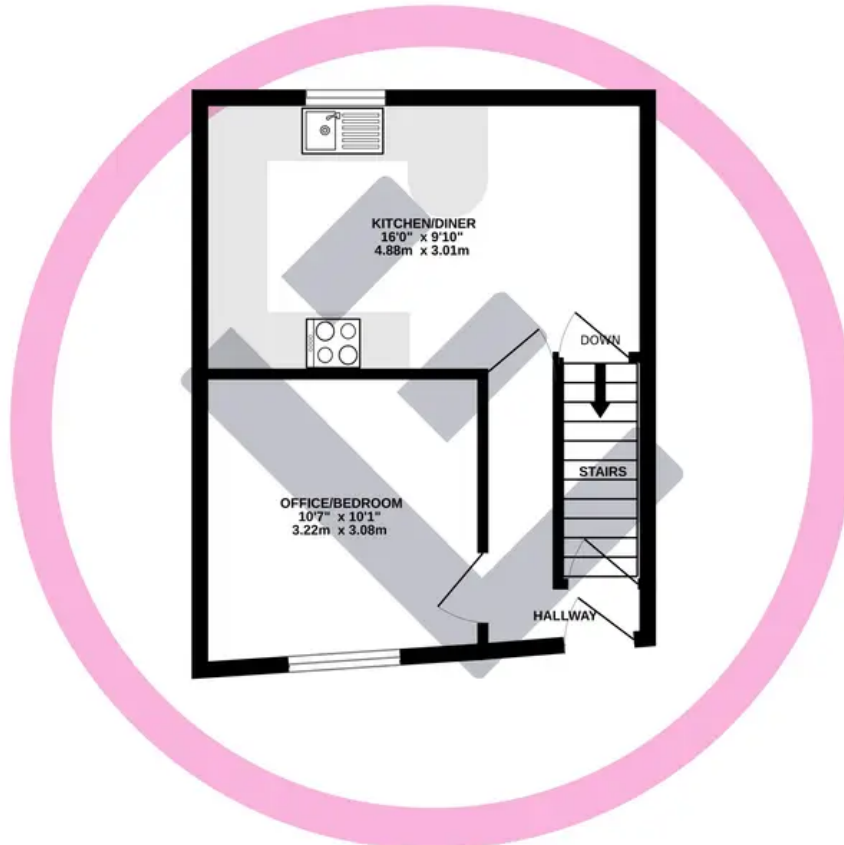
Bedrooms & Bathroom

On the first floor there are two double bedrooms, one to the front and one to the rear. The bathroom on the first floor is modern and stylish with a white three piece bathroom suite incorporating a p shaped bath and over bath shower. The deep stone walls and original doors give both bedrooms a charming cottage feel. On the first floor there is a third good sized room which is currently used as a home office but would also make a great third bedroom.

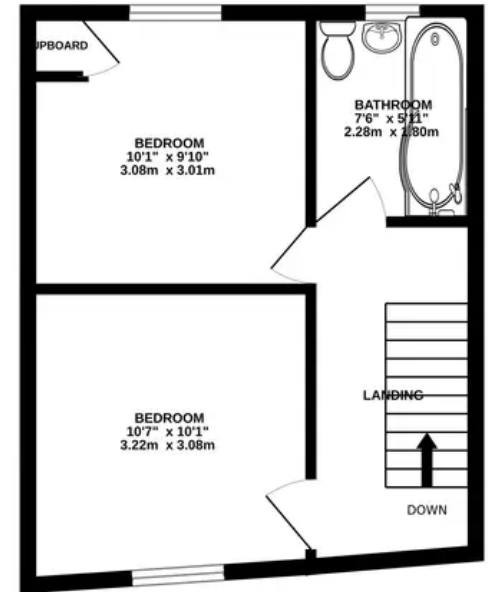
GROUND FLOOR
302 sq.ft. (28.0 sq.m.) approx.



1ST FLOOR
318 sq.ft. (29.6 sq.m.) approx.



2ND FLOOR
318 sq.ft. (29.6 sq.m.) approx.



TOTAL FLOOR AREA : 938 sq.ft. (87.2 sq.m.) approx.

Whilst every attempt has been made to ensure the accuracy of the floorplan contained here, measurements of doors, windows, rooms and any other items are approximate and no responsibility is taken for any error, omission or mis-statement. This plan is for illustrative purposes only and should be used as such by any prospective purchaser. The services, systems and appliances shown have not been tested and no guarantee as to their operability or efficiency can be given.
Made with Metropix ©2024

You can include any text here. The text can be modified upon generating your brochure.

