



26 Willowfield Road, Heysham
£270,000





26 Willowfield Road

Heysham, Morecambe

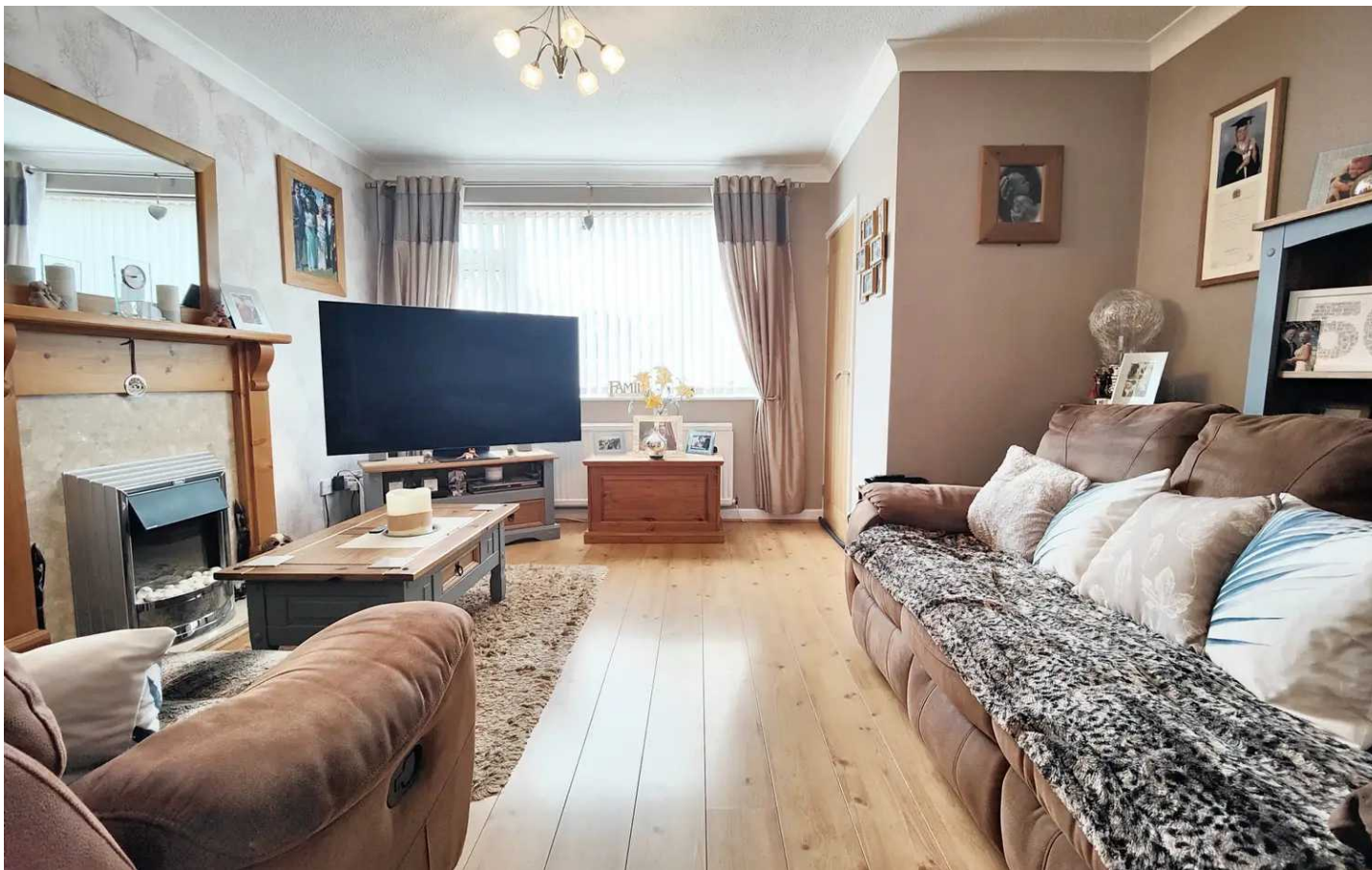
Stylish 3-bed detached house in sought-after area. Spacious kitchen diner, conservatory, en-suite master bedroom. Features garden dog groom room and modern outhouse. Beautiful landscaped garden. Off-road parking. Convenient location near amenities and transport links. Perfect blend of style and comfort.

Council Tax band: C

Tenure: Freehold

- Link Detached House
- 4 Bedrooms
- Kitchen Diner
- Conservatory
- Garden Dog Groom Room
- Modern Outhouse
- Rear Garden
- Off Road Parking
- Popular Residential Area
- Transport & Travel Links





Receptions & Conservatory

A superb family home! This modernised, link detached four bed house will be popular with families! The uPVC double glazed front door opens to a light and welcoming hallway. From the hallway stairs lead up to the first floor and a modern, wooden panelled door opens to the lounge. Modern wood effect flooring is complemented by décor in neutral tones throughout both reception rooms. The lounge has a private view over the block paved parking to the front and there is a white pebble effect living flame gas fire. The dining room at the rear has sliding patio doors opening onto a generous conservatory at the rear and a door opens to the kitchen diner at the side. This creates the perfect open layout for family evenings or entertaining at home.

Kitchen Diner

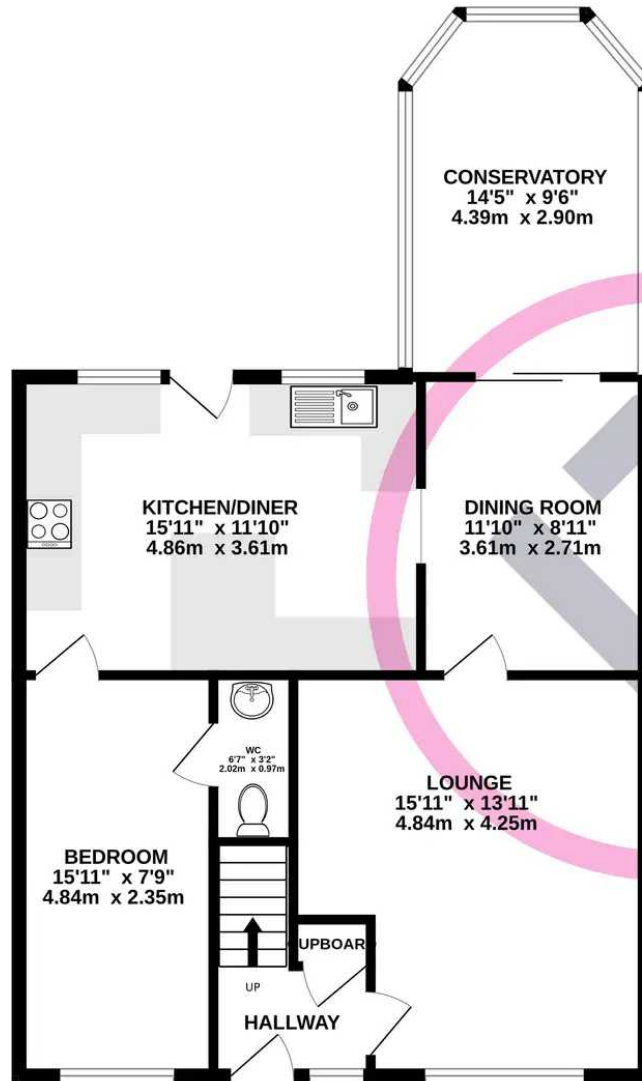
Light cream shaker style cabinets are complemented by wood worktops and splash back tiling. The kitchen has integrated appliances and bespoke space for an American Style fridge freezer. There is a large breakfast bar, perfect for a catch up coffee and the double glazed door opens to the well kept rear garden. A further modern wooden door opens to the ground floor bedroom.



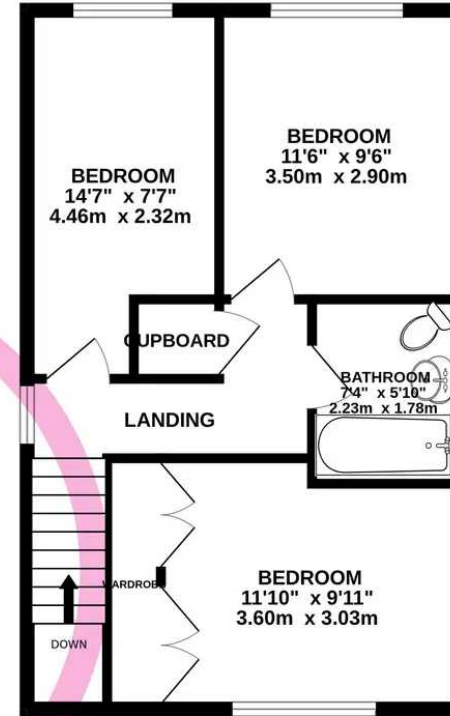
Bedrooms & Bathroom

Having three bedrooms up stairs and one downstairs creates a versatile layout for families. Downstairs the double bedroom enjoys an attached WC. It would also function well as a home office. Upstairs you will find the master bedroom with a full wall of built in wardrobes and at the rear are Bedrooms 2 and 3. The modern bathroom enjoys a Jacuzzi bath, bowl style wash basin and WC.

GROUND FLOOR
819 sq.ft. (76.1 sq.m.) approx.



1ST FLOOR
475 sq.ft. (44.1 sq.m.) approx.



TOTAL FLOOR AREA : 1294 sq.ft. (120.2 sq.m.) approx.

Whilst every attempt has been made to ensure the accuracy of the floorplan contained here, measurements of doors, windows, rooms and any other items are approximate and no responsibility is taken for any error, omission or mis-statement. This plan is for illustrative purposes only and should be used as such by any prospective purchaser. The services, systems and appliances shown have not been tested and no guarantee as to their operability or efficiency can be given.
Made with Metropix ©2024

You can include any text here. The text can be modified upon generating your brochure.

