



Apt 216, Court View House, Aalborg Place
£159,950





Apartment 216

Court View House, Lancaster

Luxurious 2nd-floor apartment in central sought-after development. Features 2 double bedrooms, contemporary design, open plan living area, lift access, en-suite shower room, parking space. No chain, vibrant urban location, well-kept communal areas, atrium, and emphasis on comfort and style.

Council Tax band: B

Tenure: Leasehold

- 2nd Floor Apartment
- No Chain
- 2 Double Bedrooms
- Stylish Open Plan Living
- Bathroom & En-Suite Shower Room
- Lift Access
- Allocated Parking
- Sought After Central Development
- City Centre Amenities
- Well Kept Communal Areas



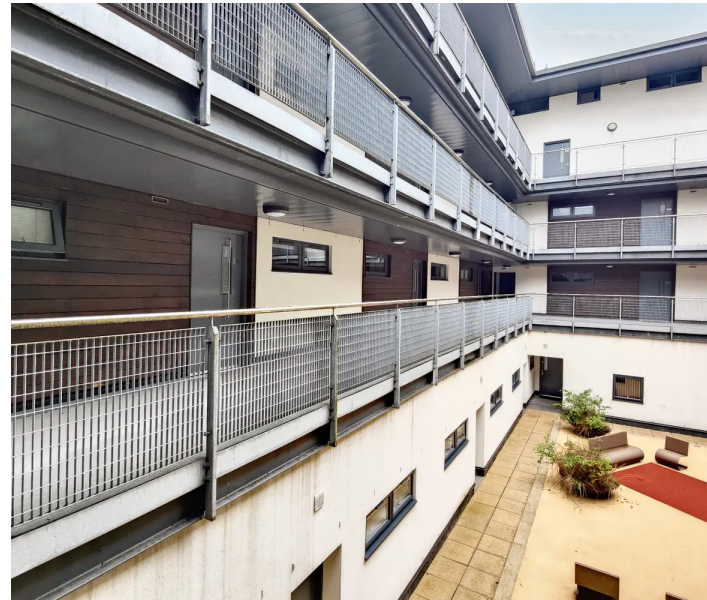


The Apartment

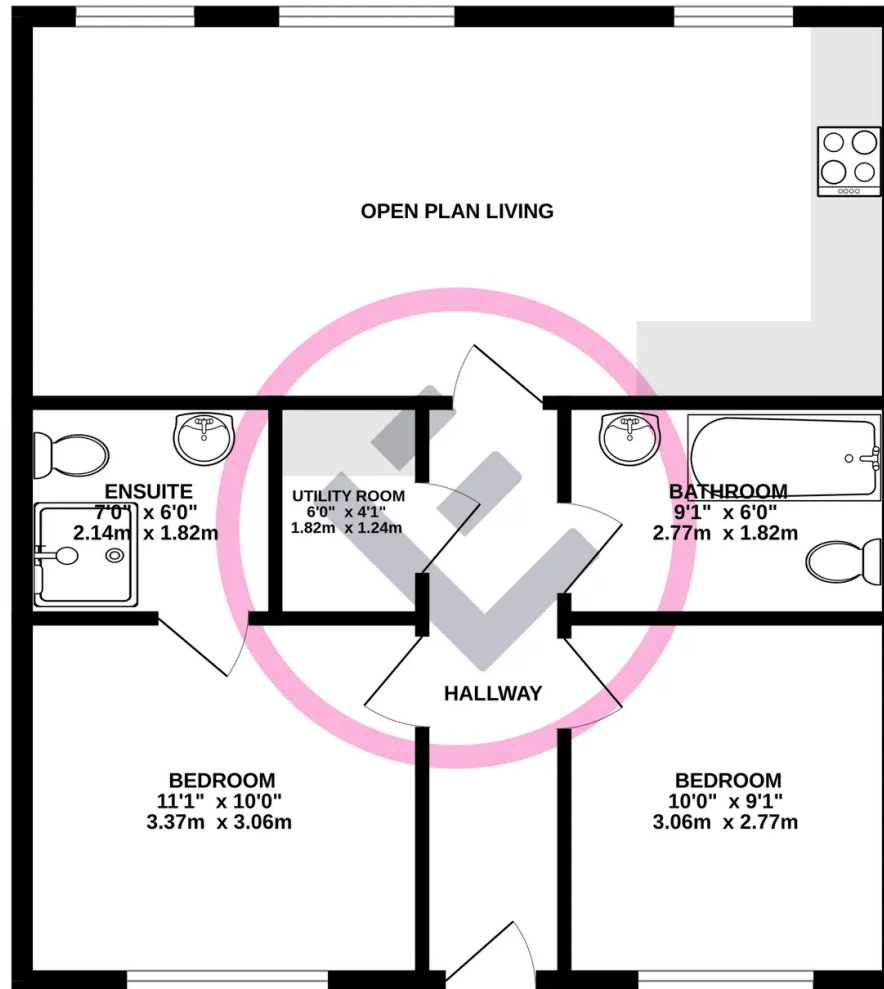
You will find clean, well kept communal hallways and lift access to the second floor where this apartment is situated. The solid wood front door opens to a central hallway with matching doors leading to the room on either side. Straight ahead you will find generous, light and bright open plan living where three windows make for light living. The open plan kitchen to the right is sleek with gloss black cabinets and a complementing grey counter top. The grey tile effect flooring creates the perfect style finish. The kitchen has an integrated hob, oven, fridge, freezer and black extractor hood. The apartment is all electric. With plenty of space to dine and a generous lounge area, all open plan, this is the perfect city centre space for relaxing or entertaining.

Bedrooms & Bathrooms

Both bedrooms are generous doubles. The master bedroom enjoys an en-suite shower room and has built in wardrobes. The bathroom is sleek and modern with a three piece bath suite. The apartment also enjoys a separate utility room providing space for a washer dryer and housing the double insulated, stainless steel water tank.



GROUND FLOOR
643 sq.ft. (59.7 sq.m.) approx.



TOTAL FLOOR AREA : 643 sq.ft. (59.7 sq.m.) approx.

Whilst every attempt has been made to ensure the accuracy of the floorplan contained here, measurements of doors, windows, rooms and any other items are approximate and no responsibility is taken for any error, omission or mis-statement. This plan is for illustrative purposes only and should be used as such by any prospective purchaser. The services, systems and appliances shown have not been tested and no guarantee as to their operability or efficiency can be given.
Made with Metropix ©2024

You can include any text here. The text can be modified upon generating your brochure.

