



8 Cedarwood Place, Lancaster
£400,000





8 Cedarwood Place

Lancaster, Lancaster

Open the doors to luxury living in this refurbished 4 bed detached in one Lancaster's most desirable areas! Views to the rear, a quiet cul de sac to the front. Garage, garden, parking, conservatory & so much more! Move In Ready w/ NO CHAIN!

Council Tax band: E

Tenure: Freehold

- Detached House
- 4 Bedrooms
- Master EnSuite & G/Flr Cloakroom
- 2 Receptions & Double Doors
- Conservatory
- Kitchen Diner
- Rear Garden
- NO CHAIN
- Sought After Cul De Sac
- Transport & Travel Links





An elegant, detached house with plenty of curb appeal – step inside and you are greeted with fresh décor, new carpets and an impressive luxury feel. There is plenty of space throughout the house. All 4 bedrooms are a great size and downstairs there is plenty of space for the whole family with two receptions, connected by double doors, a kitchen diner and a conservatory. The lounge has an elegant bay window and modern focal fire. The dining room opens to the rear conservatory with views over the garden. A second set of double doors in the conservatory opens to the dining area of the kitchen diner creating a great flow to the living spaces.

Kitchen Diner

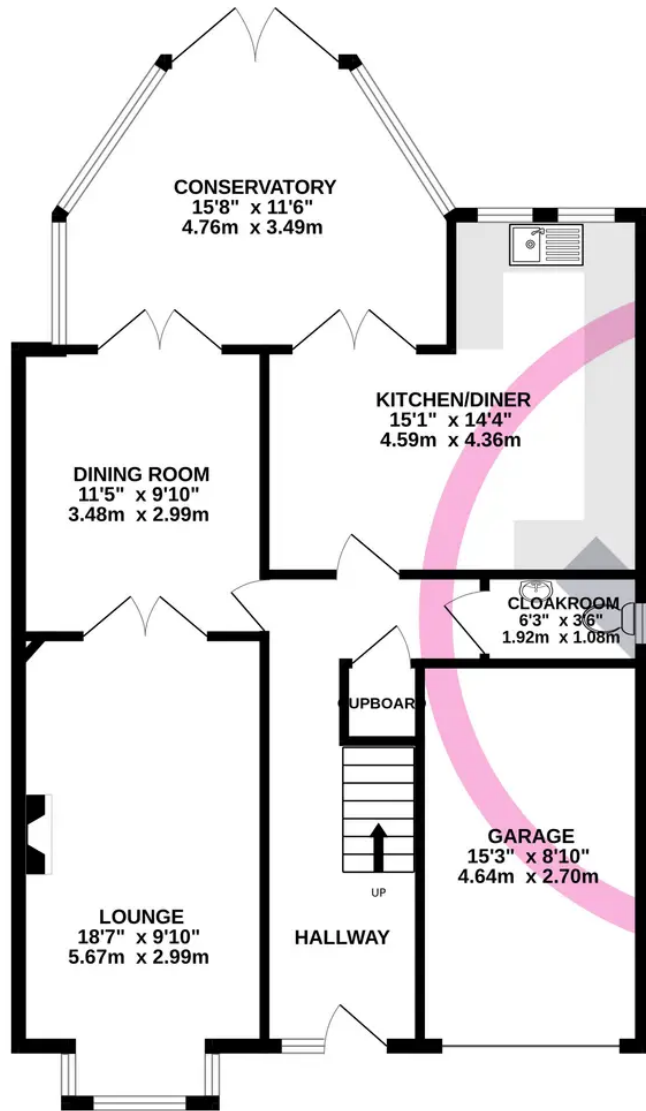
The kitchen diner has porcelain gloss effect tiled flooring and beech effect cabinets with stainless steel T bar handles. Integrated appliances include the Smeg oven with gas hob and modern extractor hood with feature lighting above. There is an integrated dishwasher and space for an integrated washer and a dryer. The sparkle top counter tops are complemented by dark mosaic effect splash back tiling. There is space for an American Style fridge freezer. A cloakroom/WC completes the ground floor accommodation.

Upstairs

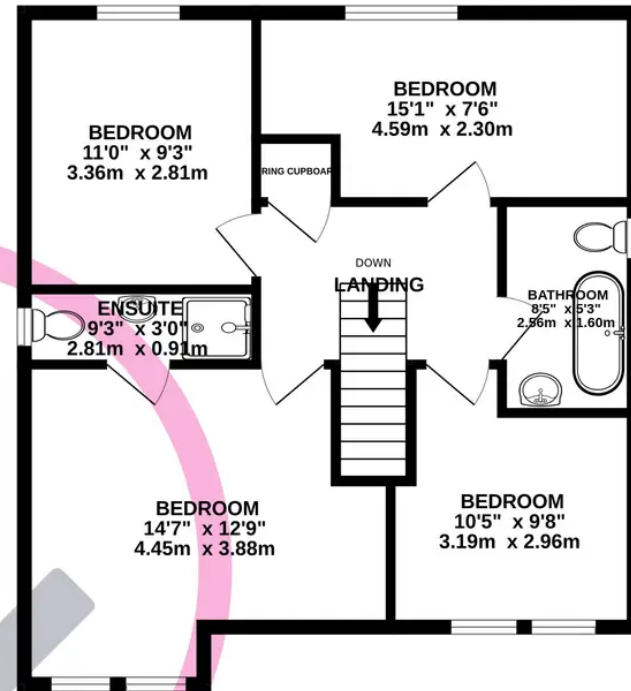
Four generous bedrooms are a great asset to this house. The master enjoys an ensuite shower room and the house also has a modern bathroom with tub style bath, wash basin and WC.



GROUND FLOOR
894 sq.ft. (83.1 sq.m.) approx.



1ST FLOOR
610 sq.ft. (56.7 sq.m.) approx.



TOTAL FLOOR AREA : 1504 sq.ft. (139.8 sq.m.) approx.

Whilst every attempt has been made to ensure the accuracy of the floorplan contained here, measurements of doors, windows, rooms and any other items are approximate and no responsibility is taken for any error, omission or mis-statement. This plan is for illustrative purposes only and should be used as such by any prospective purchaser. The services, systems and appliances shown have not been tested and no guarantee as to their operability or efficiency can be given.
Made with Metropix ©2024

You can include any text here. The text can be modified upon generating your brochure.

