



53 Belle Vue Terrace, Lancaster
£475,000





53 Belle Vue Terrace

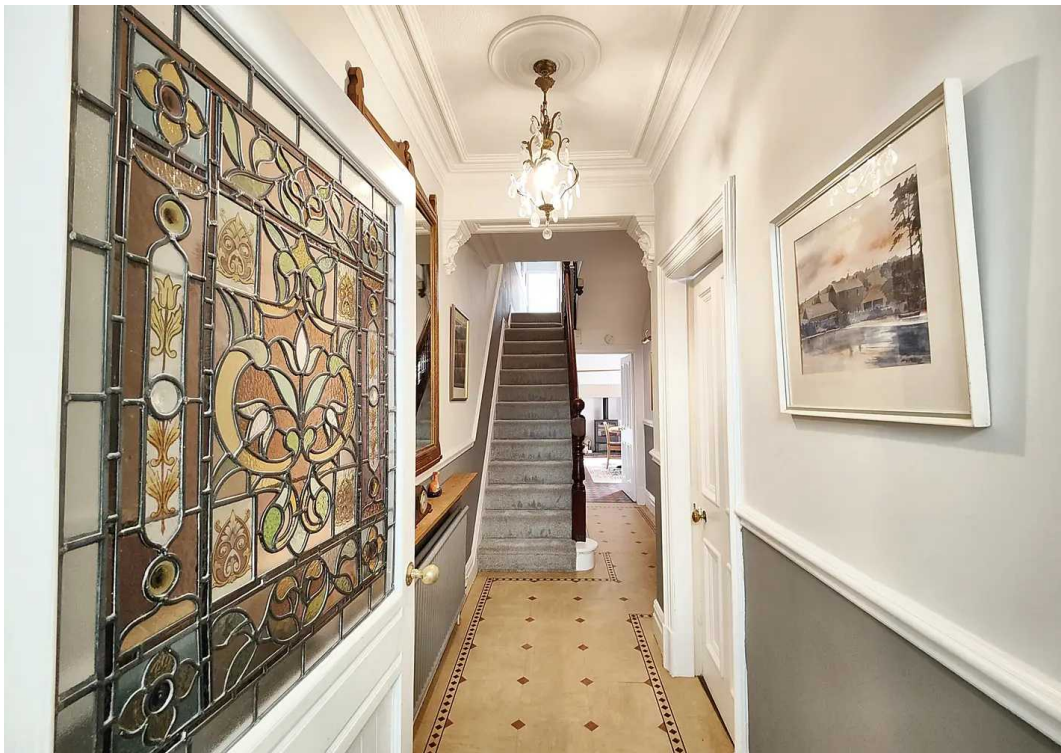
Lancaster, Lancaster

Classic interiors & character features in sought after South Lancaster! With views, gardens and so much space this impressive bay fronted Victorian home is offered for sale with no onward chain!

Council Tax band: E

Tenure: Freehold

- Victorian Terraced House
- 4 Double Bedrooms
- 3 Reception Rooms
- 4 Floors, including Cellar
- No Chain
- Grand Character Property
- Fireplaces, Features & Stunning Interiors
- Gardens Front & Rear
- Sought After South Lancaster
- Transport & Travel Links





Location

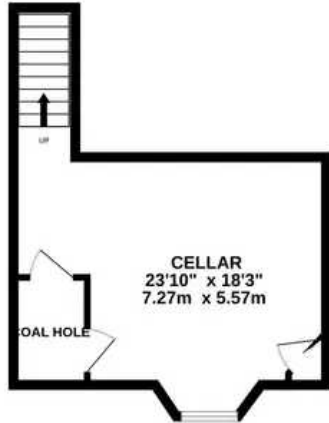
Situated in the sought after Greaves area of South Lancaster Belle Vue Terrace sits proudly in an elevated position above Greaves Road. The city centre with a whole host of amenities is within walking distance but there are also great local amenities with shops in Greaves and Scotforth too. There is a regular bus service to the university and the RLI is just a short walk away. An impressive family home with great views and within the catchment area of several great primary schools, and of Ripley St Thomas and both Lancaster Grammar Schools.

The House

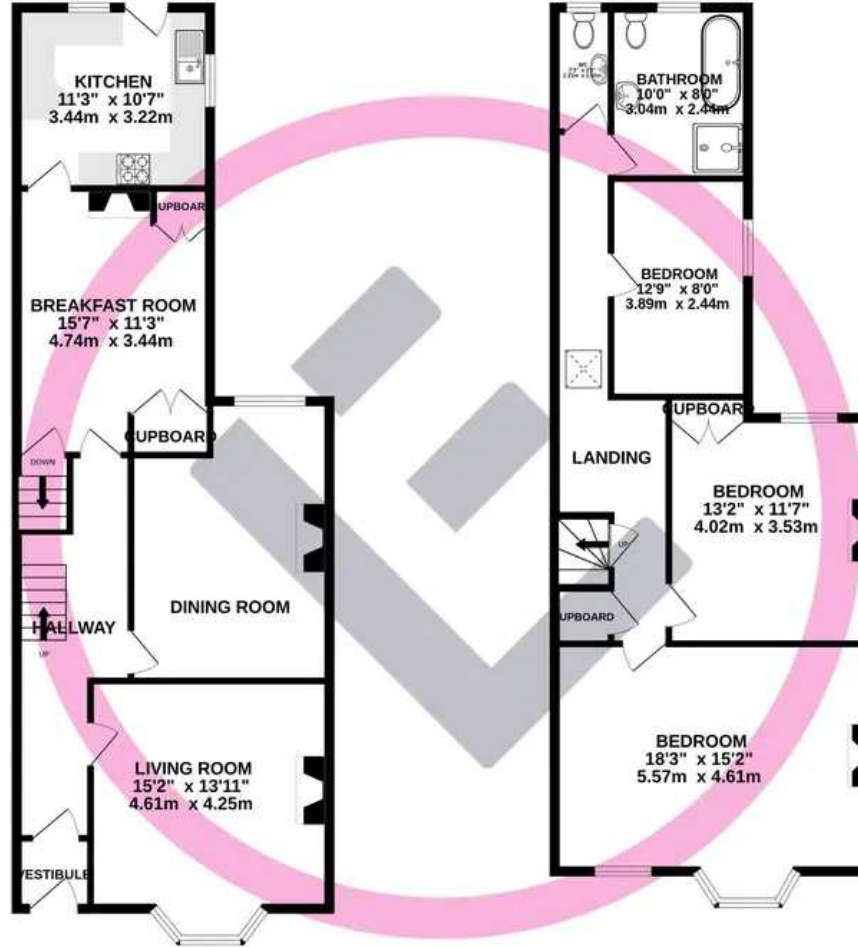
What an impressive home this is! Packed full of character features and with generous proportions throughout this house is truly captivating. Step inside through the impressive front door and immediately you are greeted by stunning stain glass panels and mosaic floor tiles in the vestibule. The main hallway is large with airy high ceilings, cornicing and corbel stones. Throughout the house you will find perfectly chosen interior décor incorporating Farrow & Ball colours. Room Type: Lounge, dining room and Breakfast Room The bay fronted living room looks out over the front garden to the church. There is a beautiful original fire surround with tiled inserts and cast iron fireplace. To the rear the dining room, currently used as a bedroom, has a second original fireplace and in the Breakfast Room you will find quarry tiles to the floor and a wood burning stove.



CELLAR
283 sq.ft. (26.3 sq.m.) approx.



GROUND FLOOR
791 sq.ft. (73.5 sq.m.) approx.



1ST FLOOR
757 sq.ft. (70.3 sq.m.) approx.



2ND FLOOR
413 sq.ft. (38.4 sq.m.) approx.

TOTAL FLOOR AREA : 2244 sq.ft. (208.5 sq.m.) approx.

Whilst every attempt has been made to ensure the accuracy of the floorplan contained here, measurements of doors, windows, rooms and any other items are approximate and no responsibility is taken for any error, omission or mis-statement. This plan is for illustrative purposes only and should be used as such by any prospective purchaser. The services, systems and appliances shown have not been tested and no guarantee as to their operability or efficiency can be given.

Made with Metropix ©2024

You can include any text here. The text can be modified upon generating your brochure.

