



Flat 4 245 Marine Road Central, Morecambe
£195,000





Flat 4 245 Marine Road Central

, Morecambe

Luxury 2-bed penthouse on Morecambe Promenade offers breath taking sea views & modern design. Open-plan living, high-end finishes, no chain. Ideal coastal lifestyle with dining & entertainment nearby. Perfect blend of elegance & convenience. Prime location. Don't miss out, book a viewing now.

Council Tax band: A

Tenure: Leasehold

- Penthouse Apartment
- Luxury Conversion
- No Chain
- 2 Double Bedrooms
- Panoramic Sea Views
- Morecambe's Promenade
- Close to Eden Site
- Stylish, Modern Living
- Show Apartment
- Transport & Travel Links





Location

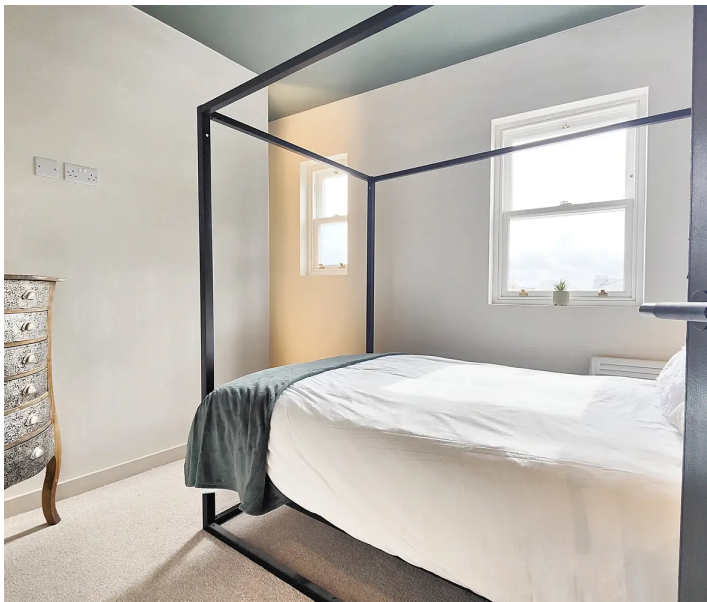
Locations don't get much better than this! With Eric to bring you sunshine everyday this really is a prime Morecambe location on Marine Road Central. The position is so well placed for everything Morecambe has to offer now and in the future. There is a good range of shops within yards of the front door and having the promenade on your doorstep means stunning, panoramic sea views and those famous, ever changing sunsets are yours to enjoy every day. From the bay windows you can enjoy Morecambe Bay and The Lakeland Hills.

Penthouse Living

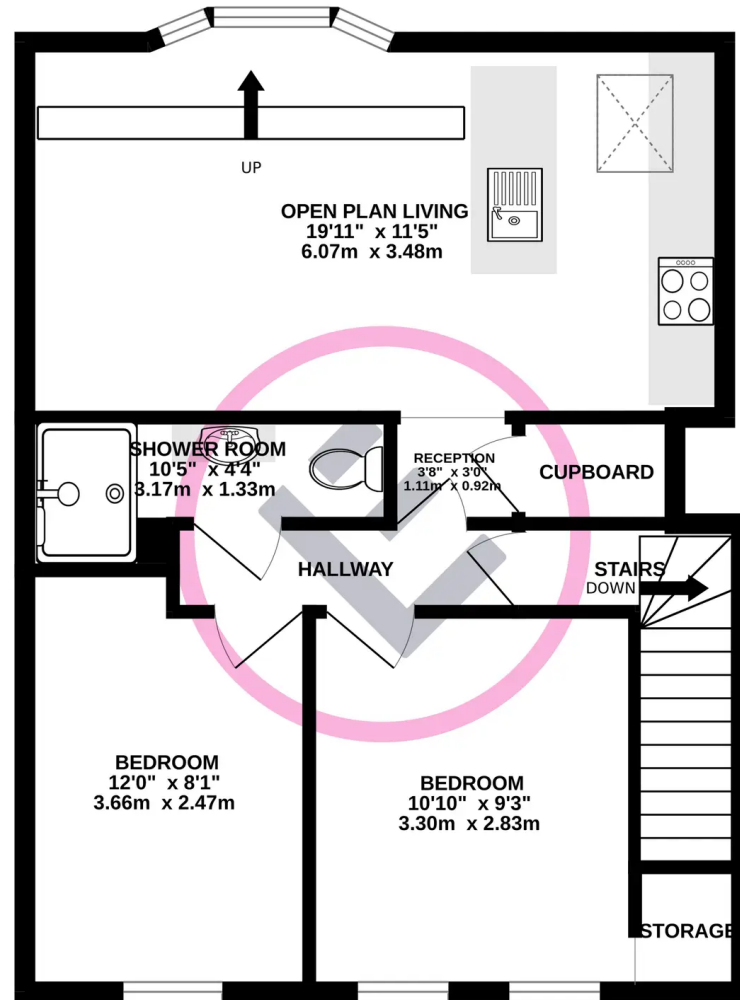
Occupying the top floor this penthouse style apartment makes the most of the position with panoramic sea views to the front. Step inside and you are greeted by luxury living. The hallway is carpeted to match the bedrooms and striking dark green décor creates the perfect welcome. To your right you will find the open plan living space opens up. The kitchen combines modern cabinets, integrated appliances, a low profile dark marble work top and a modern Butler style sink which is set within a bespoke unit incorporating reclaimed wood. A Velux window makes the kitchen space light and bright. The rustic breakfast bar offers space to catch up, to dine and to entertain. The living space incorporates a media wall with focal fire and exposed stone work mirrors the exposed brick of the kitchen area. A raised seating area has bay windows looking straight out to those stunning sea views. Stripped floorboards are the perfect finish.

Bedrooms & Shower Room

Beautifully finished bedrooms, both doubles are situated side by side at the rear of the building. The décor is stunning in both and feature lighting adds ambience. The master bedroom utilises the over stair space for storage. The shower room continues the style combining a large, striking shower enclosure with feature lighting, recessed storage and herringbone tiling with a reclaimed wood basin area.



2ND FLOOR
544 sq.ft. (50.5 sq.m.) approx.



TOTAL FLOOR AREA: 544 sq.ft. (50.5 sq.m.) approx.

Whilst every attempt has been made to ensure the accuracy of the floorplan contained here, measurements of doors, windows, rooms and any other items are approximate and no responsibility is taken for any error, omission or mis-statement. This plan is for illustrative purposes only and should be used as such by any prospective purchaser. The services, systems and appliances shown have not been tested and no guarantee as to their operability or efficiency can be given.
Made with Metropix ©2024

You can include any text here. The text can be modified upon generating your brochure.

