



Orchard Crescent

Horsmonden TN12 8LG

£1,300 PCM



COUNTRY HOMES

Horsmonden TN12 8LG

A STUNNING REFURBISHED FIRST FLOOR MAISONETTE. LOCATED IN POPULAR VILLAGE LOCATION.

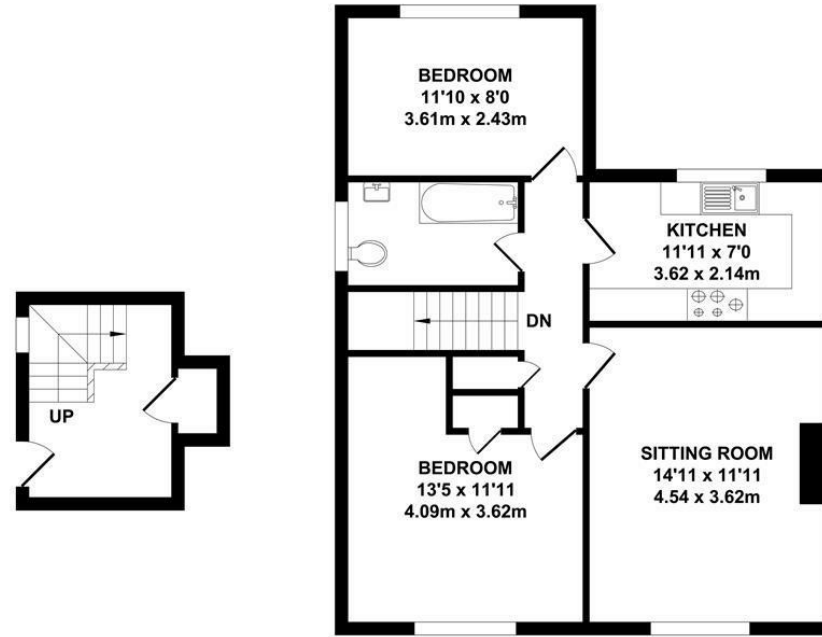
This first floor maisonette offers over 700sqft of space making it larger than most of its counterparts.

The well appointed accommodation offers two double bedrooms, a great size reception, a stunning fitted kitchen with full range of modern grey base and wall mounted units with copper fittings and matching mixer tap. Like the kitchen the bathroom has a modern three piece suite and has been fully tiled. Outside shared garden with lawn and large ample storage cupboard.

Orchard Crescent is within easy walking distance of the village green and is equally convenient for the primary and nursery schools. There is a good range of shops including the award winning Heath Stores. Other facilities include a pharmacy, hairdressers, pub/restaurant, village hall, social club, tennis and cricket clubs, doctors surgery and bus service to neighbouring villages and towns. The larger town of Paddock Wood is a short drive away with its main line station for those commuters to London.

- Refurbished first floor maisonette
- Close to local amenities
- Stunning kitchen & bathroom
- Two double bedrooms
- Good size reception
- Garden
- Available early August 2024
- Sorry no pets
- Village location



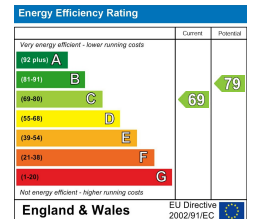


GROUND FLOOR
APPROX. FLOOR AREA
78 SQ.FT.
(7.22 SQ.M.)

FIRST FLOOR
APPROX. FLOOR AREA
634 SQ.FT.
(58.92 SQ.M.)

TOTAL APPROX. FLOOR AREA 712 SQ.FT. (66.14 SQ.M.)

Whilst every attempt has been made to ensure the accuracy of the floor plan contained here, measurements of doors, windows, rooms and any other items are approximate and no responsibility is taken for any error, omission or mis-statement. This plan is for illustrative purposes only and should be used as such by any prospective purchaser. The services, systems and appliances shown have not been tested and no guarantee as to their operability or efficiency can be given.
Zome Media ©2023



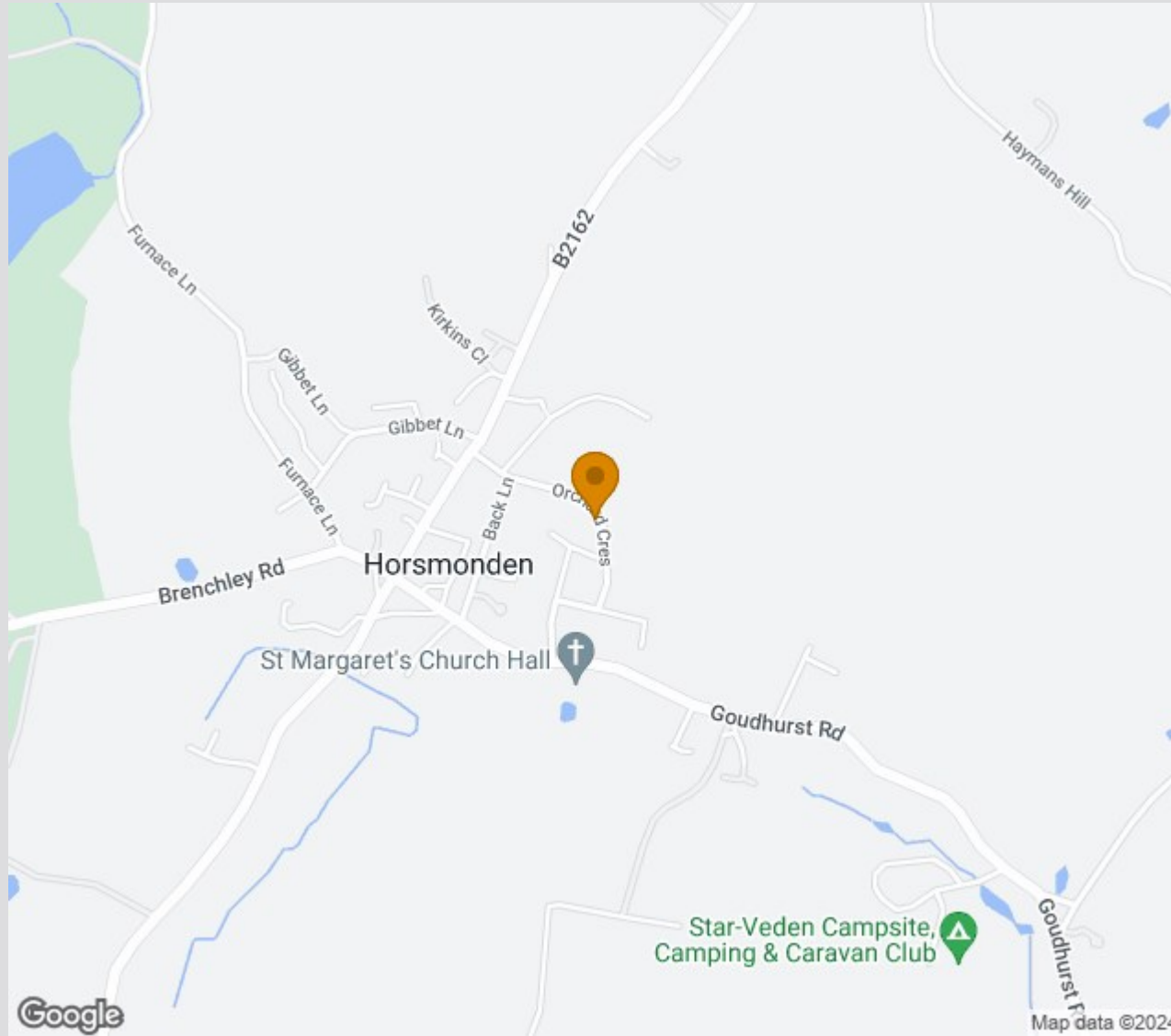




Location Map

Tenure:

Council tax band: B



TO VIEW CONTACT:

01732 522 822

countryhomes@khp.me

www.khp.me

