



# Wardes Moat Vicarage Road

Yalding ME18 6DY

£2,000 PCM



COUNTRY HOMES



## Yalding ME18 6DY

Wardes Moat is an impressive two double bedroom apartment set well back from Vicarage Road with long, private, tree-lined driveway in idyllic grounds boasting acres of grounds. The apartment offers a wealth of Georgian charm.

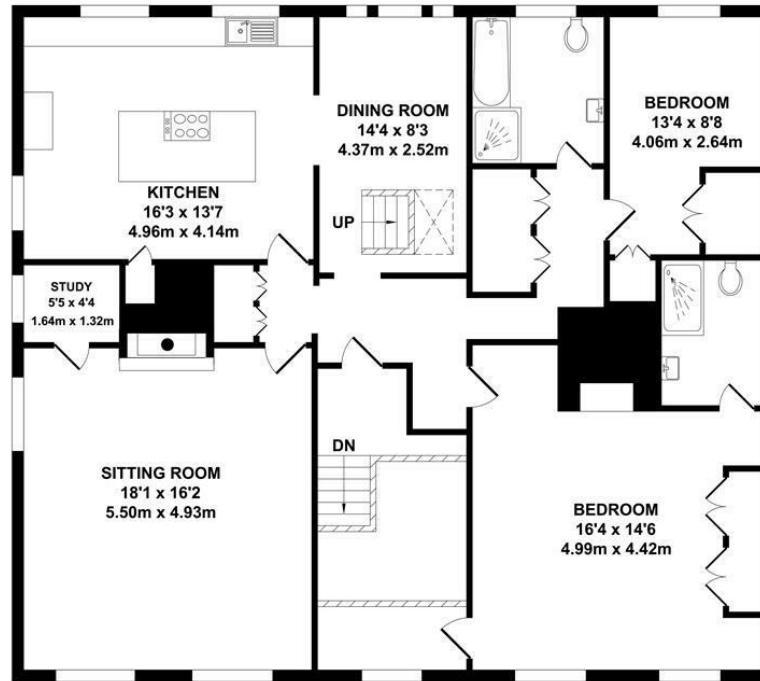
Once inside this character home you will soon realise that despite being an older property there is real balance of period charm and functionality, with all modern conveniences catered for. As you can see from the floor plan and photos the accommodation is bright, spacious and is offered in excellent decorative order throughout and measures over 1500 square feet.

The penthouse offers stunning views from all the main rooms and has two large bedrooms, with the master being larger than most properties and offers its own ensuite shower room which is finished to standard that you would find in top end luxury hotels making this a stunning feature of this home. This continues with kitchen with its modern functionality but fits so well with the charm of the home with its design. The kitchen is open plan to a great size dining room flows well with its matching flooring and décor. The main reception is the real hub of this apartment being dual aspect this room offers so much natural light during the day and summer nights but with its feature fire place and stove can be cosy and warm in winter months. Like the rest of the apartment this room is well appointed with modern colours but still fits in so well with charm of the room. Offer features include a main bathroom and study.

Wardes Moat in Yalding is part of a thriving community with its popular primary school, ancient church, medical centre, village shops and restaurants all within walking distance. Within the village are many buildings of historic and architectural interest including a medieval bridge. All around is the lovely Kent countryside for some wonderful walks, Yalding has its own railway station but train commuters also have the choice of a faster service from Paddock Wood or Marden

- Very rare to the rental market
- Luxury penthouse apartment
- Converted from a stunning Georgian period property
- Set in stunning grounds & located in historic village
- Two large bedrooms
- Ensuite & main bathroom
- Top specification kitchen with stone work tops & appliances
- Parking
- Available Now
- Viewing recommended

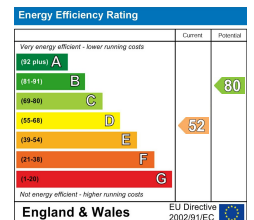




GROUND FLOOR  
 APPROX. FLOOR AREA  
 1522 SQ.FT.  
 (141.40 SQ.M.)

TOTAL APPROX. FLOOR AREA 1522 SQ.FT. (141.40 SQ.M.)

Whilst every attempt has been made to ensure the accuracy of the floor plan contained here, measurements of doors, windows, rooms and any other items are approximate and no responsibility is taken for any error, omission or mis-statement. This plan is for illustrative purposes only and should be used as such by any prospective purchaser. The services, systems and appliances shown have not been tested and no guarantee as to their operability or efficiency can be given.  
 Zome Media ©2023



8 Liberty Square, Kings Hill, Kent, ME19 4AU  
 01732 522 822  
 countryhomes@khp.me







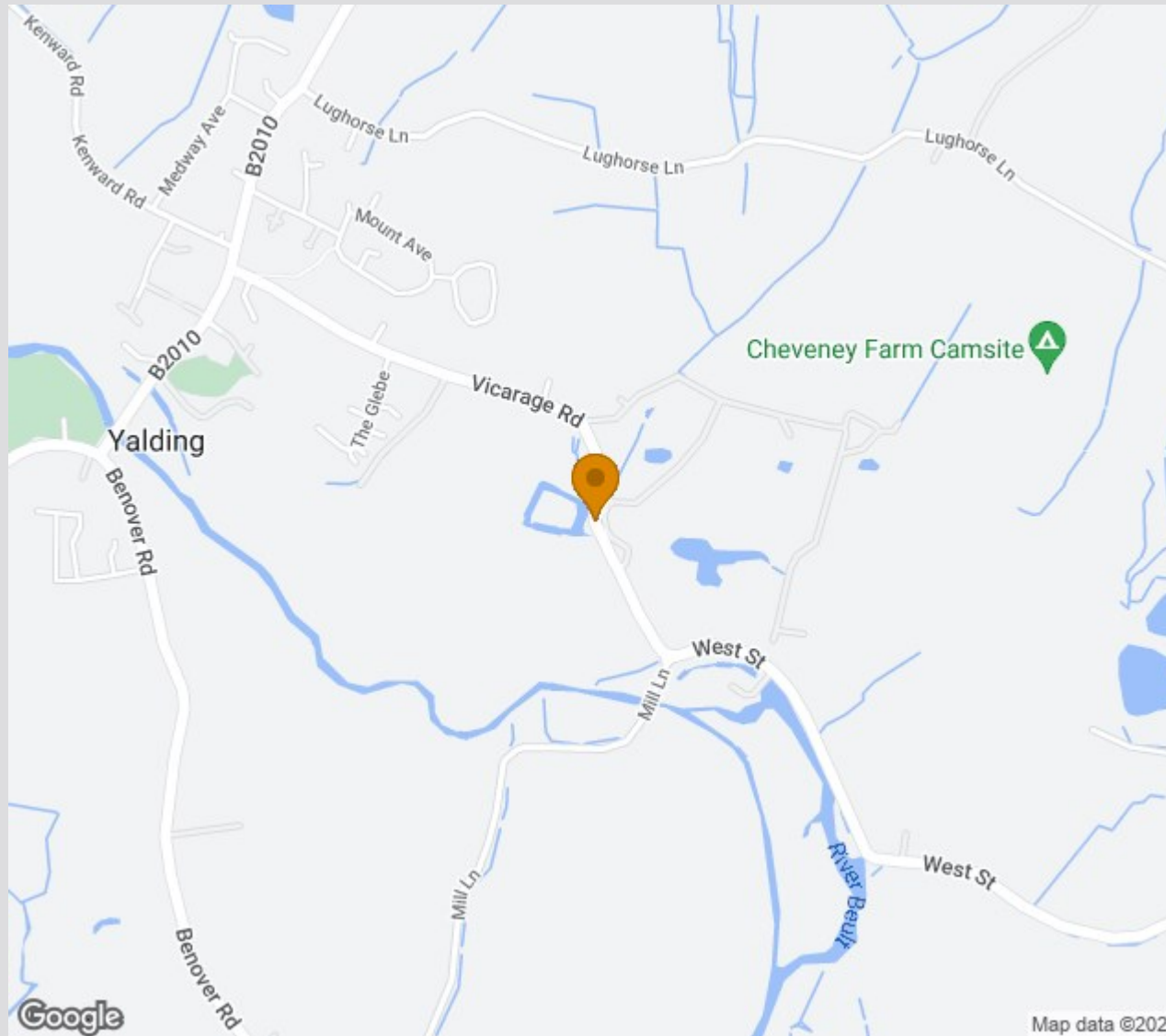




## Location Map

Tenure:

Council tax band:



TO VIEW CONTACT:

01732 522 822

countryhomes@khp.me

www.khp.me

