



3  2  2 

**Freehold : Council Tax Band D
EPC Rating TBC**

Clear View, Saltash

BELVOIR!

Guide price £375,000



Key Features

- > Three Double Bedroom Detached Bungalow
- > Lovely River Views
- > Immaculately Presented Throughout
- > En-Suite Bedroom On The First Floor
- > A Superb Kitchen Opening Into A Dining Room

Belvoir are very pleased to present this wonderful, three double bedroom detached home located in a highly popular road with far reaching river and countryside views!

This delightful property is immaculately presented throughout and boasts an array of salient features that include; a level brick-paved driveway for multiple vehicles, a single garage (no vehicle access), a fabulous living room with fireplace and large window overlooking the garden, a stunning modern kitchen opening into a separate dining room, a stylish downstairs shower room, a double bedroom downstairs, two further double bedrooms with excellent fitted wardrobes on the first floor one with a stylish en-suite shower room.



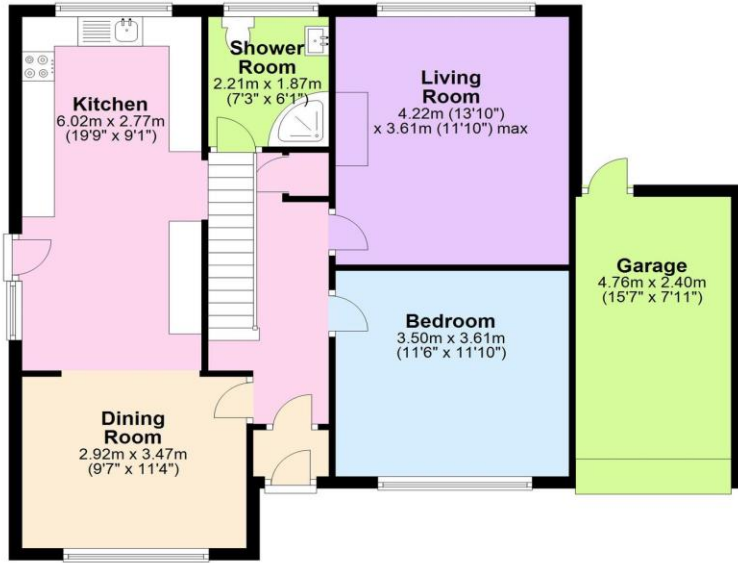
A large cellar with utility area and lots of storage room, an absolutely gorgeous rear garden with lawn, patio and decked area - just perfect for gardening, entertaining and al fresco dining! The property also benefits from gas central heating and double glazing.

This unique home needs to be seen to be fully appreciated so contact us asap to book your viewing!

Saltash is a picturesque town that lies just across the River Tamar from Plymouth and is often referred to as the "Gateway to Cornwall". The town centre itself provides many shops and the doctors, dentists, library and leisure centre are all close by. There are four primary schools, a college and secondary school, along with a local health centre and many places of worship. South East Cornwall boasts many waterside villages such as St Germans and Cargreen, all within easy commuting distance to Saltash and the City of Plymouth.

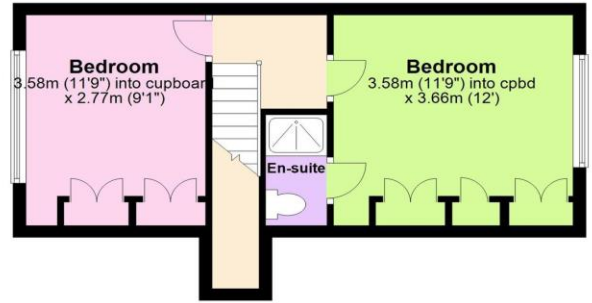
Ground Floor

Approx. 82.1 sq. metres (884.1 sq. feet)



First Floor

Approx. 30.9 sq. metres (332.3 sq. feet)



Total area: approx. 113.0 sq. metres (1216.4 sq. feet)



We endeavour to make our sales particulars accurate and reliable, however, they do not constitute or form part of an offer or any contract and none is to be relied upon as statements of representation or fact. Any services, systems and appliances listed in this specification have not been tested by us and no guarantee as to their operating ability or efficiency is given. All measurements have been taken as a guide to prospective buyers only, and are not precise. If you require clarification or further information on any points, please contact us, especially if you are travelling some distance to view. Fixtures and fittings other than those mentioned are to be agreed with the seller by separate negotiation.

Contact us today to arrange a viewing...

BELVOIR!

belvoir.co.uk/offices/plymouth

01752 850440