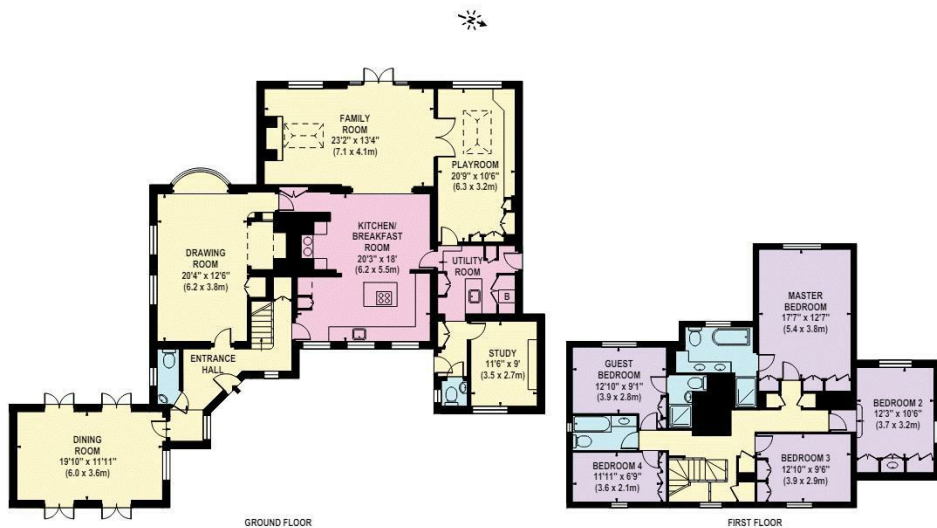




Howard Morley
& Sons

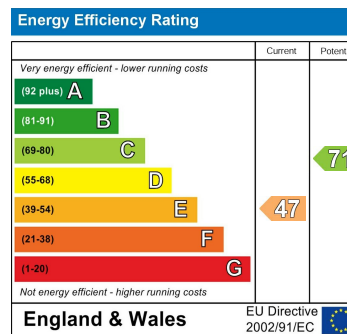
PER MONTH

£8,700 Per Month
Polsted Lane



APPROX. GROSS INTERNAL FLOOR AREA 3124 SQ FT / 290 SQ M

Whilst every effort has been made to ensure the accuracy of the floor plan, measurements of rooms, fixtures and fittings are approximate and should not be relied upon for exact measurements. These are for guidance purposes only and should not be relied upon for exact measurements. The floor plan is for guidance purposes only and should not be relied upon for exact measurements. The floor plan is for guidance purposes only and should not be relied upon for exact measurements.



Agents Note: Whilst every care has been taken to prepare these particulars, they are for guidance purposes only. All measurements are approximate and are for general guidance purposes only and whilst every care has been taken to ensure their accuracy, they should not be relied upon and potential buyers/tenants are advised to recheck the measurements

Howard Morley
& Sons

OFFICE ADDRESS
276 High Street
Guildford
Surrey
GU1 3JL

OFFICE DETAILS
01483 575 304
lettings@hmorley.co.uk
hmorley.co.uk