



Howard Morley
& Sons

PER MONTH

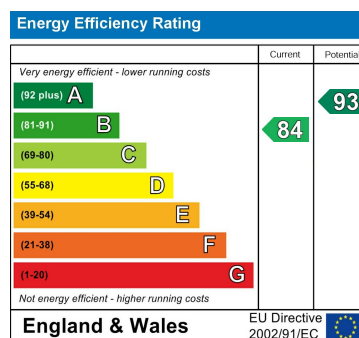
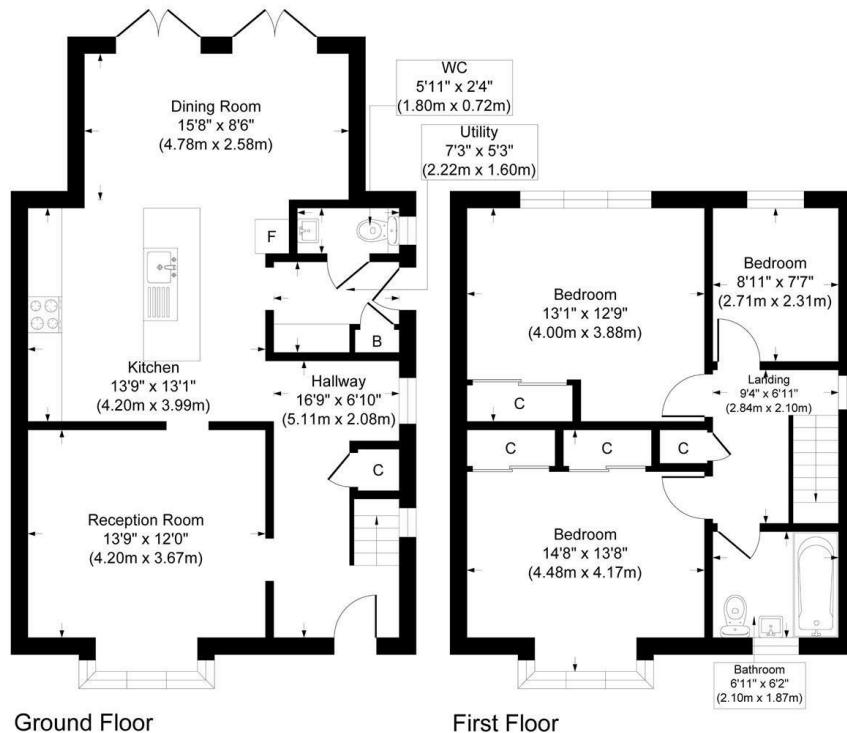
£2,850 Per Month

Beech Grove

Guildford, GU2 7UZ



Approximate Gross Internal Floor Area = 114.6 sq m / 1234 sq ft



Agents Note: Whilst every care has been taken to prepare these particulars, they are for guidance purposes only. All measurements are approximate and are for general guidance purposes only and whilst every care has been taken to ensure their accuracy, they should not be relied upon and potential buyers/tenants are advised to recheck the measurements

Howard Morley
& Sons

OFFICE ADDRESS
276 High Street
Guildford
Surrey
GU1 3JL

OFFICE DETAILS
01483 575 304
lettings@hmorley.co.uk
hmorley.co.uk