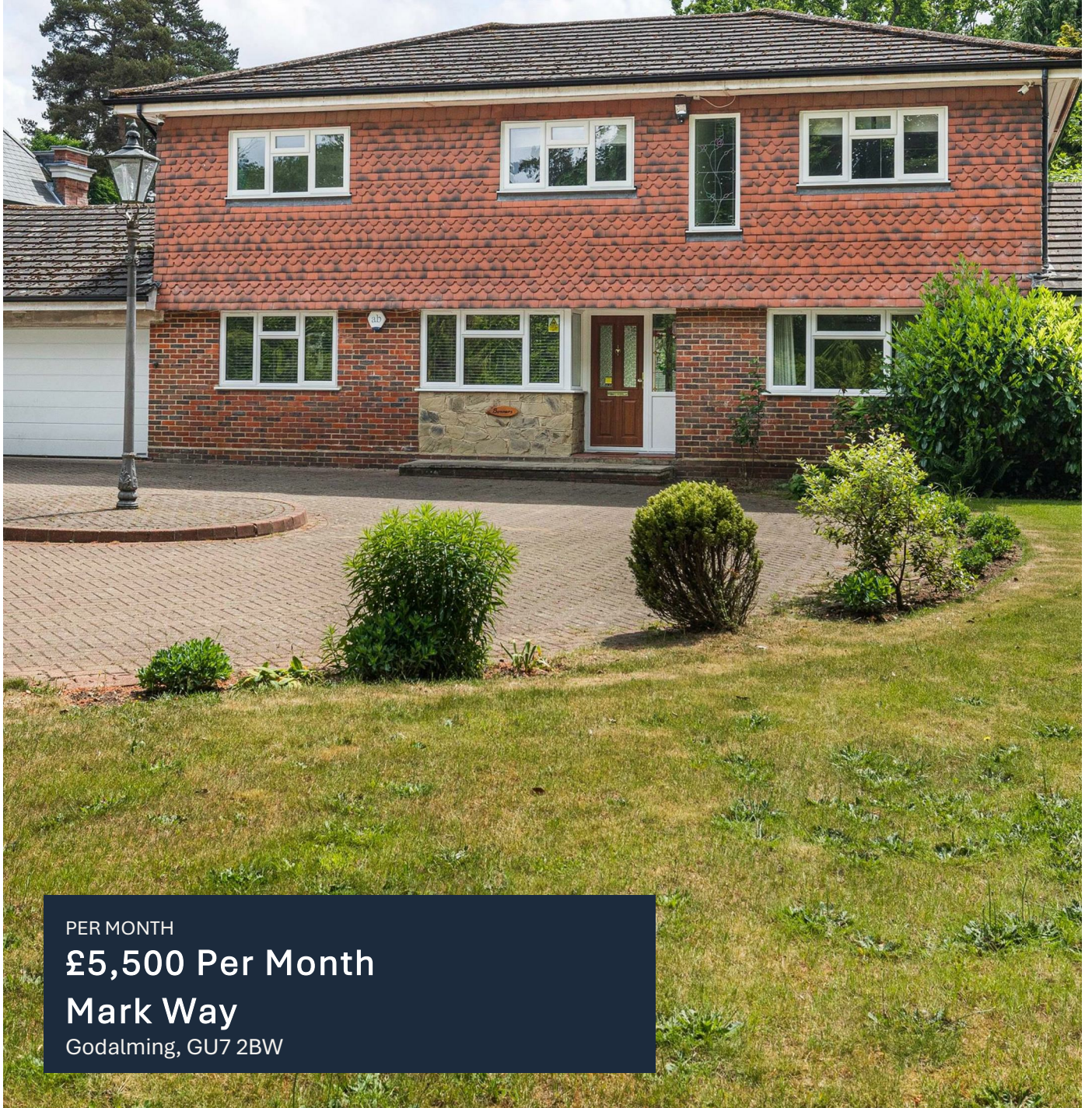


Howard Morley & Sons

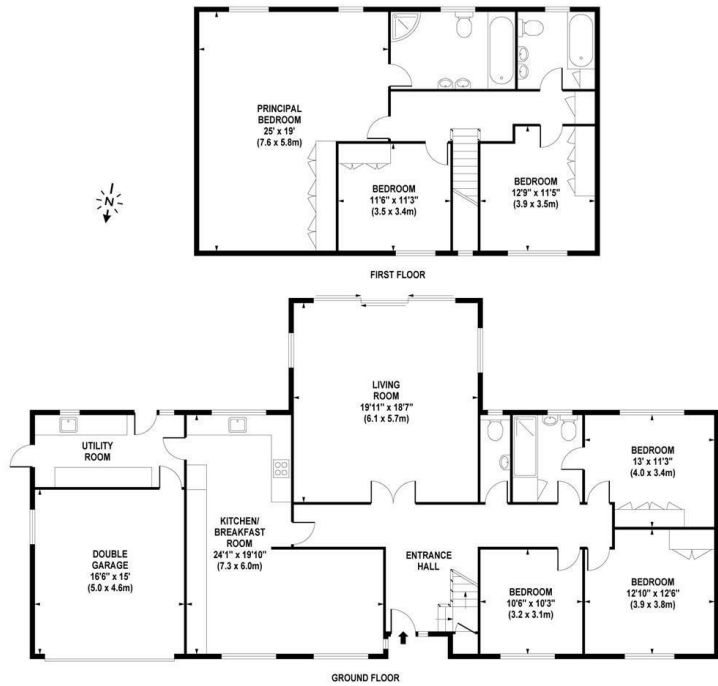


PER MONTH

£5,500 Per Month

Mark Way

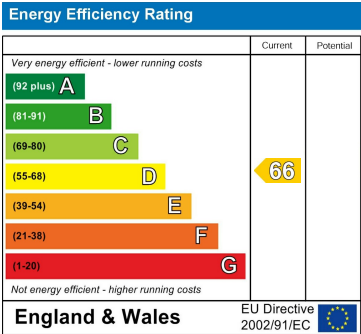
Godalming, GU7 2BW



APPROX. GROSS INTERNAL FLOOR AREA 2784 SQ FT / 259 SQ M (INCLUDING DOUBLE GARAGE)

Whilst every attempt has been made to ensure the accuracy of the floorplan contained here, measurements of doors, windows and rooms are approximate and no responsibility is taken for any error omission or misstatement. These plans are for representation purposes only and should be used as such by any prospective purchaser/tenant. The services, systems and appliances listed in this specification have not been tested and no guarantee as to their operating ability or their efficiency can be given.

© www.skyhighglobal.com



Agents Note: Whilst every care has been taken to prepare these particulars, they are for guidance purposes only. All measurements are approximate and are for general guidance purposes only and whilst every care has been taken to ensure their accuracy, they should not be relied upon and potential buyers/tenants are advised to recheck the measurements

OFFICE ADDRESS
 276 High Street
 Guildford
 Surrey
 GU1 3JL

OFFICE DETAILS
 01483 575 304
 lettings@hmorley.co.uk
 hmorley.co.uk