



Howard Morley
& Sons

PER MONTH

£2,000 Per Month

Quarry Street

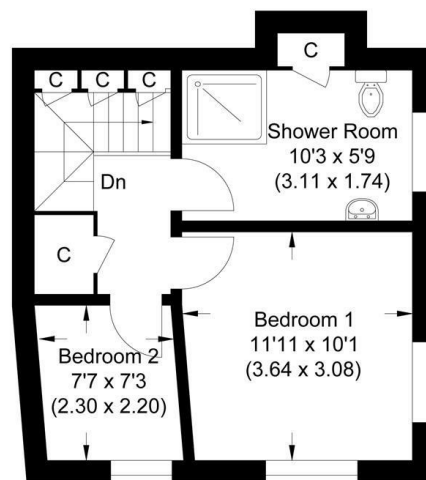
Guildford, GU1 3XQ



Approximate Gross Internal Area
58.96 sq m / 634.64 sq ft

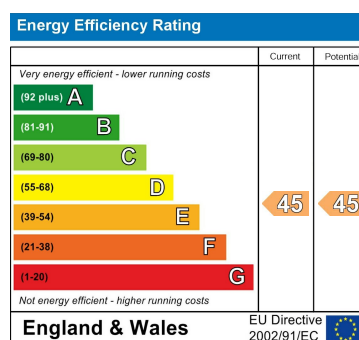


Ground Floor



First Floor

Illustration for identification purposes only, measurements are approximate, not to scale.



Agents Note: Whilst every care has been taken to prepare these particulars, they are for guidance purposes only. All measurements are approximate and are for general guidance purposes only and whilst every care has been taken to ensure their accuracy, they should not be relied upon and potential buyers/tenants are advised to recheck the measurements

Howard Morley
& Sons

OFFICE ADDRESS
276 High Street
Guildford
Surrey
GU1 3JL

OFFICE DETAILS
01483 575 304
lettings@hmorley.co.uk
hmorley.co.uk