

The logo for Howard Morley & Sons is positioned in the top right corner of the image. It features the company name in a dark, serif font, with a stylized circular emblem containing a tree-like design positioned between the words 'Morley' and '& Sons'.

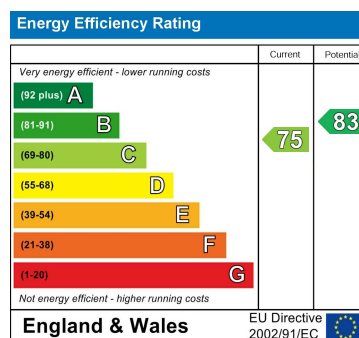
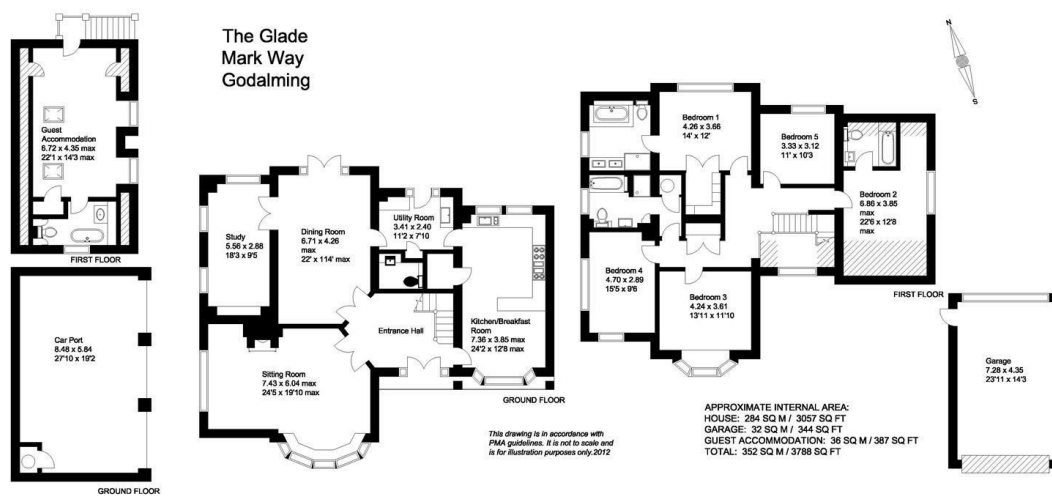
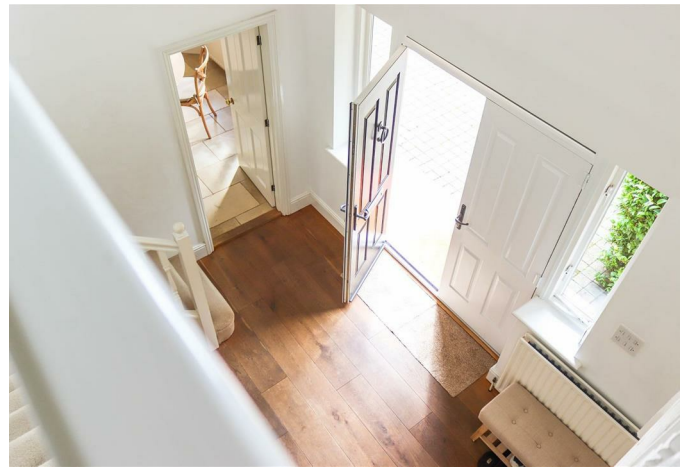
Howard Morley
& Sons

PER MONTH

£5,950 Per Month

Mark Way

Godalming, GU7 2BW



Agents Note: Whilst every care has been taken to prepare these particulars, they are for guidance purposes only. All measurements are approximate and are for general guidance purposes only and whilst every care has been taken to ensure their accuracy, they should not be relied upon and potential buyers/tenants are advised to recheck the measurements

**Howard Morley
& Sons**

OFFICE ADDRESS
276 High Street
Guildford
Surrey
GU1 3JL

OFFICE DETAILS
01483 575 304
lettings@hmorley.co.uk
hmorley.co.uk