



# Howard Morley & Sons

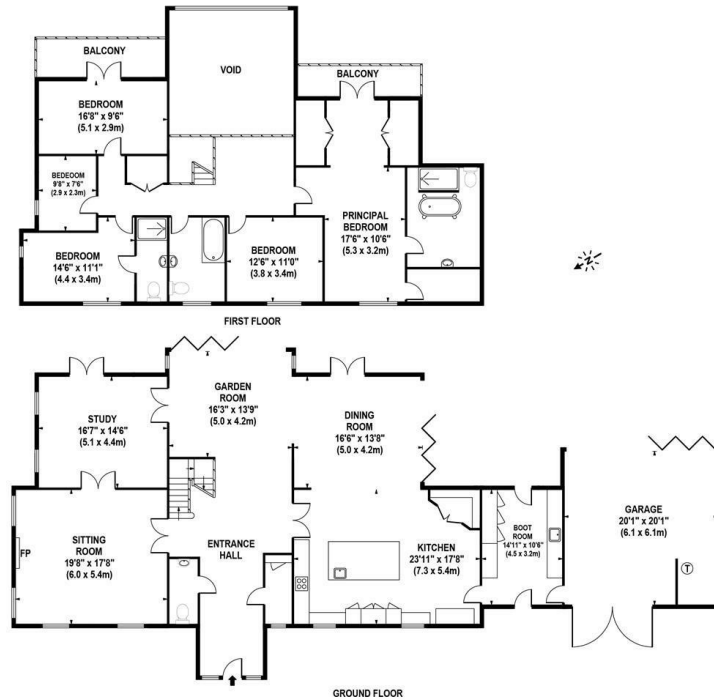
PER MONTH

**£10,000 Per Month**

**Woodhouse Lane**

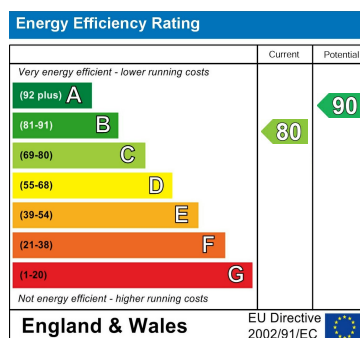
Holmbury St. Mary, RH5 6NN





APPROX. GROSS INTERNAL FLOOR AREA 3885 SQ FT / 361 SQ M (INCLUDING GARAGE)

We warrant that the information contained herein is true and correct to the best of our knowledge and belief. However, we do not warrant the accuracy of the information and we do not accept any liability for any loss or damage caused by reliance on the information. The information is provided for general guidance only and should not be relied upon for any specific purpose. The information is provided for general guidance only and should not be relied upon for any specific purpose. The information is provided for general guidance only and should not be relied upon for any specific purpose.



Agents Note: Whilst every care has been taken to prepare these particulars, they are for guidance purposes only. All measurements are approximate and are for general guidance purposes only and whilst every care has been taken to ensure their accuracy, they should not be relied upon and potential buyers/tenants are advised to recheck the measurements

Howard Morley  
& Sons

OFFICE ADDRESS  
276 High Street  
Guildford  
Surrey  
GU1 3JL

OFFICE DETAILS  
01483 575 304  
lettings@hmorley.co.uk  
hmorley.co.uk